

ANNALES DE L'INSTITUT FOURIER

Thomas HAETTEL

**XXL type Artin groups are CAT(o) and acylindrically
hyperbolic**

Tome 72, n° 6 (2022), p. 2541-2555.

<https://doi.org/10.5802/aif.3524>

Article mis à disposition par son auteur selon les termes de la licence
CREATIVE COMMONS ATTRIBUTION – PAS DE MODIFICATION 3.0 FRANCE



<http://creativecommons.org/licenses/by-nd/3.0/fr/>



Les *Annales de l'Institut Fourier* sont membres du
Centre Mersenne pour l'édition scientifique ouverte

www.centre-mersenne.org

e-ISSN : 1777-5310

XXL TYPE ARTIN GROUPS ARE CAT(0) AND ACYLINDRICALLY HYPERBOLIC

by Thomas HAETTEL (*)

ABSTRACT. — We describe a simple locally CAT(0) classifying space for XXL type Artin groups (with all labels at least 5). Furthermore, when the Artin group is not dihedral, we describe a rank 1 periodic geodesic, thus proving that XXL type Artin groups are acylindrically hyperbolic. Together with Property RD proved by Ciobanu, Holt and Rees, the CAT(0) property implies the Baum–Connes conjecture for all XXL type Artin groups.

RÉSUMÉ. — Nous décrivons un espace classifiant localement simple CAT(0) pour les groupes d'Artin de type extra extra large (dont tous les exposants sont au moins égaux à 5). De plus, lorsque le groupe n'est pas diédral, nous décrivons une géodésique périodique de rang 1, ce qui implique que ces groupes d'Artin de type extra extra large sont acylindriquement hyperboliques. En conjonction avec la propriété RD prouvée par Ciobanu, Holt et Rees, cela implique la conjecture de Baum–Connes pour tout les groupes d'Artin de type extra extra large.

1. Introduction

Artin–Tits groups are natural combinatorial generalizations of Artin's braid groups. For every finite simple graph Γ with vertex set S and with edges labeled by some integer in $\{2, 3, \dots\}$, one associates the Artin–Tits group $A(\Gamma)$ with the following presentation:

$$A(\Gamma) = \langle S \mid \forall \{s, t\} \in \Gamma^{(1)}, w_m(s, t) = w_m(t, s) \text{ if the edge } \{s, t\} \text{ is labeled } m \rangle,$$

Keywords: Artin groups, CAT(0) space, acylindrical hyperbolicity, Baum–Connes conjecture.

2020 *Mathematics Subject Classification:* 20F36, 20F65, 20F67.

(*) The author would like to thank warmly Chris Cashen for discussions and an invitation to the University of Vienna, where part of this work was initiated. The author would like to thank Anthony Genevois and Damian Osajda for many insightful comments. The author would also like to thank the anonymous referee for comments improving the exposition.

where $w_m(s, t)$ is the word $stst\dots$ of length m . Note that when $m = 2$, then s and t commute, and when $m = 3$, then s and t satisfy the classical braid relation $sts = tst$.

Also note that when adding the relation $s^2 = 1$ for every $s \in S$, one obtains the Coxeter group $W(\Gamma)$ associated to Γ . Most results about Artin–Tits groups only concern particular classes, which we recall now. The Artin group $A(\Gamma)$ is called:

- of *large type* if all labels are greater or equal to 3,
- of *extra large type* if all labels are greater or equal to 4,
- of *extra extra large type* (XXL) if all labels are greater or equal to 5,
- *right-angled* if all labels are equal to 2,
- *spherical* if $W(\Gamma)$ is finite, and
- of *type FC* if every complete subgraph of Γ spans a spherical Artin subgroup.

The *rank* of an Artin–Tits group $A(\Gamma)$ is the number of vertices of Γ . The *dimension* of an Artin–Tits group $A(\Gamma)$ is the largest rank of a spherical Artin subgroup. In particular, every large type Artin group has dimension at most 2.

Many geometric questions are still open for general Artin groups (see [13] and [25]). In particular, Charney asks the following question, to which we believe the answer is positive:

CONJECTURE 1.1. — *Every Artin–Tits group is CAT(0), i.e. acts properly and cocompactly on a CAT(0) metric space.*

This conjecture has been proved for the following classes of Artin groups:

- (1) Right-angled Artin groups (see [14]).
- (2) Some classes of 2-dimensional Artin groups (see [7], [9]).
- (3) Artin groups of finite type with three generators (see [8]).
- (4) 3-dimensional Artin groups of type FC (see [3]).
- (5) The n -strand braid group for $n \leq 6$ (see [10], [20]).
- (6) The spherical Artin group of type B_4 (see [10]).

Since the classes of 2-dimensional Artin groups studied by Brady and McCammond in [9] and the extra extra large type Artin groups we are studying in this article have a large intersection, we will state their results more precisely.

THEOREM 1.2 (Brady and McCammond [9]). — *Let $A(\Gamma)$ be an Artin group such that one of the following holds:*

- $|S| = 3$ and all labels are greater or equal to 3.
- Γ contains no triangles.
- All labels are greater or equal to 3, and there is a way of orienting the edges of Γ so that neither of the graphs in Figure 1.1 appear as subgraphs.

Then $A(\Gamma)$ is $CAT(0)$.



Figure 1.1. The two forbidden subgraphs in Brady and McCammond’s result.

On the other hand, concerning the cubical world, very few Artin groups have proper and cocompact actions on $CAT(0)$ cube complexes (see [19]). Nevertheless, the question whether all Artin groups act properly on a $CAT(0)$ cube complex, or more generally have the Haagerup property, is still open.

Concerning variations on the notion of nonpositive curvature, Bestvina defined a geometric action of Artin groups of spherical Artin on a simplicial complex with some nonpositive curvature features (see [4]). More recently, Huang and Osajda proved (see [22]) that every Artin group of almost large type (a class including all Artin groups of large type) act properly and cocompactly on systolic complexes, which are a combinatorial variation of nonpositive curvature. They also proved (see [21]) that every Artin group of type FC acts geometrically on a Helly graph, which give rise to classifying spaces with convex geodesic bicomings.

Another variation on the notion of nonnegative curvature is the acylindrical hyperbolicity (see [27] for a survey). A group G is called acylindrically hyperbolic if it admits an acylindrical action on some hyperbolic space X (and is not virtually cyclic), i.e. for every $\varepsilon > 0$, there exist $N, R \geq 0$ such that, for every $x, y \in X$ at distance at least R , we have

$$|\{g \in G, d(x, g \cdot x) \leq \varepsilon \text{ and } d(y, g \cdot y) \leq \varepsilon\}| \leq N.$$

In most cases, it is much easier to find an action on some hyperbolic space with one element satisfying the WPD condition (see [5]), and then according to Osin (see [26]) there exists an acylindrical action on some other hyperbolic space. Concerning Artin–Tits groups, Charney and Morris–Wright

(see [15]) ask the following question, to which we believe the answer is positive:

CONJECTURE 1.3. — *For every Artin–Tits group A , the central quotient $A/Z(A)$ is acylindrically hyperbolic.*

This conjecture has been proved for the following classes of Artin groups:

- (1) Right-angled Artin groups (see [12]).
- (2) Braid groups, seen as mapping class groups (see [24] and [6]).
- (3) Artin–Tits groups of spherical type (see [11]).
- (4) Artin–Tits groups of type FC such that Γ has diameter at least 3 (see [16]).
- (5) Artin–Tits groups such that Γ does not decompose as a join of two subgraphs (see [15]).

The purpose of this article is to define a new geometric model for XXL type Artin groups.

THEOREM 1.4. — *Every XXL type Artin group is the fundamental group of a compact locally $CAT(0)$ 3-dimensional piecewise Euclidean complex. Furthermore, if the rank of the Artin group is at least 3, then some element acts as a rank 1 isometry.*

An isometry of a $CAT(0)$ space is called *rank 1* if some axis does not bound a flat half-plane. An interesting consequence, due to Sisto (see [28]), is that if a group G acts properly on a proper $CAT(0)$ space such that some element has rank 1, then G is either virtually cyclic or acylindrically hyperbolic.

Also note that if A has rank 2, then A is virtually a direct product of \mathbb{Z} and of a free group, so A is not acylindrically hyperbolic, but its geometry is well understood. In particular, the central quotient $A/Z(A)$ is virtually free and thus acylindrically hyperbolic.

We can deduce the following consequence, regarding the two main conjectures.

COROLLARY 1.5. — *Every XXL type Artin group of rank at least 3 is acylindrically hyperbolic. In particular, Conjecture 1.1 and Conjecture 1.3 hold for all XXL type Artin groups.*

Note that the class of XXL type Artin groups is not contained in the classes studied by Brady and McCammond in [9], by Martin and Chatterji [16] or by Charney and Morris–Wright [15]. For instance, if Γ is a complete graph on at least 4 vertices, with labels at least 5, then none of the previous results apply.

Many consequences of being $\text{CAT}(0)$ are already consequences of being systolic, and as such are consequences of Huang and Osajda's result (see [22]). For instance, the Novikov conjecture, the fact that centralizers virtually split, the quadratic Dehn function. Let us list a few general consequences of being $\text{CAT}(0)$ and acylindrically hyperbolic, which are new for XXL type Artin groups.

COROLLARY 1.6. — *Let A be an XXL type Artin group.*

- *A satisfies the K -theoretic and L -theoretic Farrell–Jones conjectures (see [2] and [29]).*
- *A is SQ-universal, i.e. every countable group embeds in a quotient of A (see [26]).*
- *If $V = \mathbb{R}$ or $V = \ell^p(A)$, for $p \in [1, \infty)$, then $H_b^2(A, V)$ is infinite-dimensional (see [26]).*
- *A has a free normal subgroup (see [26]).*
- *A has Property P_{naive} : for any finite subset $F \subset A \setminus \{1\}$, there exists $g \in A$ such that for all $f \in F$, the group $\langle f, g \rangle$ is freely generated by $\{f, g\}$ (see [1]).*
- *A is not inner amenable (see [18]).*
- *The reduced C^* -algebra of A is simple (see [18]).*

Ciobanu, Holt and Rees proved (see [17]) that every extra large type Artin group satisfies the Rapid Decay Property. According to Lafforgue (see [23]), the property RD together with the $\text{CAT}(0)$ property imply the Baum–Connes conjecture, so we can state the following.

COROLLARY 1.7. — *Every XXL type Artin group satisfies the Baum–Connes conjecture.*

Acknowledgments

The author would like to thank warmly Chris Cashen for discussions and an invitation to the University of Vienna, where part of this work was initiated. The author would like to thank Anthony Genevois and Damian Osajda for many insightful comments. The author would also like to thank the anonymous referee for comments improving the exposition.

2. The case of dihedral Artin groups

We start by describing a very simple nonpositively curved metric model for dihedral Artin groups, which we will use in the sequel as building blocks. If

$m \geq 2$, let us denote the dihedral Artin group by $I_2(m) = \langle a, b \mid w_m(a, b) = w_m(b, a) \rangle$.

LEMMA 2.1. — *For every $m \geq 5$, there exists a compact, locally CAT(0), 3-dimensional piecewise Euclidean complex X_m and $x_0 \in X_m$ with*

$$\pi_1(X_m, x_0) \simeq I_2(m) = \langle a, b \mid w_m(a, b) = w_m(b, a) \rangle.$$

There exist locally geodesic oriented loops X_m^a, X_m^b of length 1 through x_0 such that $\pi_1(X_m^a, x_0) = \langle a \rangle$ and $\pi_1(X_m^b, x_0) = \langle b \rangle$. Let $a^+, a^- \in \text{lk}_{x_0}(X_m)$ denote the images in the link of x_0 of the positive and negative sides of the loop X_m^a , and similarly $b^+, b^- \in \text{lk}_{x_0}(X_m)$ for X_m^b . We have furthermore:

- $X_m^a \cap X_m^b = \{x_0\}$,
- $\angle_{x_0}(a^+, b^+) = \angle_{x_0}(a^-, b^-) > \frac{4\pi}{5}$.
- $\angle_{x_0}(a^+, b^-) = \angle_{x_0}(a^-, b^+) > \frac{3\pi}{5}$.

In addition, if $m \geq 6$, we have $\angle_{x_0}(a^+, b^-) = \angle_{x_0}(a^-, b^+) > \frac{2\pi}{3}$.

Proof. — Fix $\alpha \in (0, \tan(\frac{\pi}{10}))$.

Assume first that m is odd, then according to Brady and McCammond (see [9]), there is an interesting presentation of $I_2(m)$ given by $I_2(m) = \langle a, b \mid w_m(a, b) = w_m(b, a) \rangle = \langle t, u \mid t^m = u^2 \rangle$, where $t = ab$ and $u = w_m(a, b)$, so the central quotient G of $I_2(m)$ is isomorphic to $\langle t, u \mid t^m = u^2 \rangle / \langle t^m = u^2 \rangle \simeq \mathbb{Z}/m\mathbb{Z} \star \mathbb{Z}/2\mathbb{Z}$. Consider the action of G on the Bass-Serre $(m, 2)$ -biregular tree T , and consider the regular m -gonal complex T_m obtained from T by replacing the star of each vertex with valency m by a regular m -gon with side length 1, where t acts on the base m -gon P by a rotation of angle $\frac{4\pi}{m}$. Let us denote $p = \frac{m-1}{2}$. Note that $a = t^{-p}u$ and $b = ut^{-p}$, and t^p acts on the base m -gon by a rotation of angle $\frac{4p\pi}{m} = \frac{-2\pi}{m}$. This way, the axes of a and b acting on T_m intersect the boundary of the m -gon P in consecutive sides. Let $e \in T_m$ denote the intersection of the axes of a and b , it is also the unique vertex fixed by $u = w_m(a, b)$ (see Figure 2.2).

Consider the action of $I_2(m)$ on \mathbb{R} by $a \cdot x = b \cdot x = x + \alpha$. We can endow \mathbb{R} with the piecewise Euclidean simplicial structure where the vertex set is $\alpha\mathbb{Z}$.

Let $Y_m = T_m \times \mathbb{R}$, endowed with the diagonal action of $I_2(m)$, with basepoint $y_0 = (e, 0)$. The stabilizers of the points of T_m are conjugated to either the cyclic subgroup spanned by u or by t , and these subgroups act freely properly by translations on \mathbb{R} , we deduce that the action of $I_2(m)$ on Y_m is free, with compact quotient. More precisely, since $I_2(m)$ acts transitively on vertices of T_m and since the stabilizer of each vertex has m orbits of vertices in \mathbb{R} , we deduce that Y_m has exactly m orbits of vertices. Furthermore, since Y_m is locally finite, we deduce that $X_m = I_2(m) \backslash Y_m$

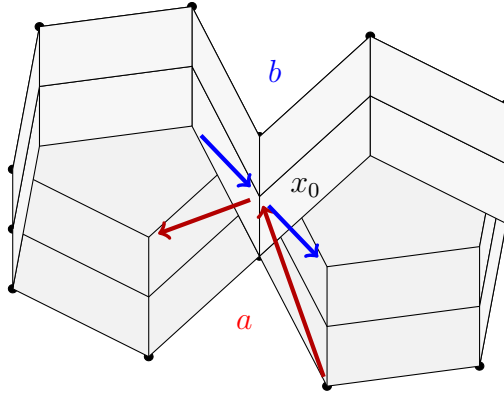


Figure 2.2. Une partie du complexe X_5 , avec les axes de a et b .

by replacing the star of each vertex with degree $2p$ by a regular $2p$ -gon with side length 1, such that t acts on the base $2p$ -gon P by a rotation of angle $\frac{4\pi}{2p}$. The action of $\langle t \rangle$ on the vertices of P has two orbits, corresponding to the two possible orientations of edges adjacent to the base vertex.

Since $b = a^{-1}t$, the axes of a and b acting on T_{2p} intersect the boundary of the $2p$ -gon P in consecutive sides. Let $e \in T_m$ denote the intersection of the axes of a and b (see Figure 2.3).

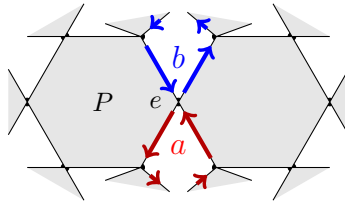


Figure 2.3. A part of the tree T_6 , with the axes of a and b .

Consider the action of $I_2(m)$ on \mathbb{R} by $a \cdot x = b \cdot x = x + \alpha$. We can endow \mathbb{R} with the piecewise Euclidean simplicial structure where the vertex set is $\alpha\mathbb{Z}$.

Let $Y_m = T_m \times \mathbb{R}$, endowed with the diagonal action of $I_2(m)$, with basepoint $y_0 = (e, 0)$. The stabilizers of the vertices of T_m are all equal to the kernel $Z(I_2(m)) = \langle t^p \rangle$ of the action. This cyclic subgroup acts freely properly by translations on \mathbb{R} , we deduce that the action of $I_2(m)$ on Y_m is free. More precisely, since $I_2(m)$ acts transitively on vertices of T_m and since the stabilizer of each vertex has $2p$ orbits of vertices in \mathbb{R} , we deduce

that Y_m has exactly $2p$ orbits of vertices. Furthermore, since Y_m is locally finite, we deduce that $X_m = I_2(m) \setminus Y_m$ is a compact locally CAT(0) space such that $\pi_1(X_m, x_0)$ is isomorphic to $I_2(m)$, where $x_0 = I_2(m) \cdot y_0$.

Let Y_m^a, Y_m^b denote the axes of a and b through y_0 , their images in X_m define locally geodesic oriented loops X_m^a and X_m^b , such that the angles at x_0 between a^+, b^+ and between a^-, b^- are both equal to

$$\pi - 2 \arctan(\alpha) > \frac{4\pi}{5}.$$

Concerning the angle between a^+ and b^- , note that the \mathbb{R} components of these vectors have opposite signs, hence the angle between a^+ and b^- is strictly bigger than the angle between their T_m components, which is precisely $\frac{(m-2)\pi}{m}$. Hence

$$\angle_{x_0}(a^+, b^-) > \frac{(m-2)\pi}{m} \geq \frac{3\pi}{5},$$

and similarly between a^- and b^+ . And, if $m \geq 6$, this angle is bigger than $\frac{2\pi}{3}$.

Up to rescaling X_m , since X_m^a and X_m^b have the same length, we can assume that they both have length 1. We can also assume that, up to refining the piecewise Euclidean structure of X_m , the axes X_m^a and X_m^b lie in the 1-skeleton. □

3. The general case of XXL type Artin groups

We now describe a metric model for XXL type Artin groups, obtained by gluing the complexes obtained by dihedral Artin groups. This is the first part of Theorem 1.4.

THEOREM 3.1. — *For every XXL type Artin group A , there exists a compact locally CAT(0) 3-dimensional piecewise Euclidean complex X_A and $x_0 \in X_A$ such that $\pi_1(X_A, x_0) \simeq A$.*

Proof. — For each $s \in S$, let X_s denote a circle with length 1 and base-point $x_0 \in X_s$, such that $\pi_1(X_s, x_0)$ will be identified with $\langle s \rangle$. Let E denote the set of all edges of Γ . For each $I \in E$, let X_I denote a copy of X_m , where m is the label of the edge I . Consider the following space

$$X_A = \left(\bigcup_{I \in E} X_I \cup \bigcup_{s \in S} X_s \right) / \sim,$$

where the identifications are given, for all $s \in S$ and $I = \{s, t\} \in \mathcal{S}_2$, by $X_s \sim X_{s,t}^s$. According to the Van Kampen Theorem, the fundamental

group $\pi_1(X_A, x_0)$ is isomorphic to A . Up to refining the cell structure, we can assume that X_A is a piecewise Euclidean cell complex X_A . In order to prove that X_A is locally CAT(0), according to Gromov’s link condition, it is sufficient to prove that the link of every vertex is CAT(1). For every edge e of X_A , the link of e in X_A is the disjoint union of links of e in all X_I ’s that contain e . Since each X_I is CAT(0), the link of e in X_A is CAT(1).

In other words, it is enough to prove that the link of every vertex of X_A is large, i.e. every closed locally geodesic loop has length at least 2π . Fix a vertex $x \in X_A$, and assume that ℓ is a locally geodesic loop in the link of x . We will prove that ℓ has length at least 2π .

Assume first that ℓ is contained in a unique X_{ab} . Since X_{ab} is CAT(0), the link of x in X_A is large, so ℓ has length at least 2π .

Assume now that ℓ is contained in $X_{ab} \cup X_{bc}$. Since X_b is convex in both X_{ab} and X_{bc} , we know that $X_{ab} \cup X_{bc}$ is CAT(0), hence ℓ has length at least 2π .

Assume now that ℓ is contained in $X_{ab} \cup X_{bc} \cup X_{ac}$, but not less than three. Recall that ℓ is locally geodesic and X_a and X_b are convex in X_{ab} . Therefore if ℓ enters X_{ab} through X_a , it exits X_{ab} through X_b , and similarly for X_{bc} and X_{ac} . In particular, the length of ℓ is at least

$$\angle_{x_0}(a^+, b^-) + \angle_{x_0}(b^-, c^+) + \angle_{x_0}(c^+, a^+) = 2 \times \frac{3\pi}{5} + \frac{4\pi}{5} = 2\pi$$

or

$$\angle_{x_0}(a^+, b^+) + \angle_{x_0}(b^+, c^+) + \angle_{x_0}(c^+, a^+) = 3 \times \frac{4\pi}{5} > 2\pi.$$

Assume now that ℓ is contained in no fewer than four X_I ’s. Then its length is at least $4 \times \frac{3\pi}{5} > 2\pi$.

In conclusion, every locally geodesic loop in the link of x has length at least 2π . So the link of x is CAT(1), and X_A is locally CAT(0). \square

Note that this construction is not sharp, meaning that we could also build this way a locally CAT(0) model for some Artin groups which are not of XXL type. However, the precise combinatorial conditions would not be very elegant to write down. Furthermore, such a construction cannot be adapted to take into account the (3, 3, 3) triangle Artin group for instance, which is known by Brady and McCammond (see [9]) to be CAT(0) using another complex.

4. A rank one geodesic

We will now prove that the locally CAT(0) complex we built for XXL type Artin groups has rank 1, meaning that there exists a periodic geodesic in the universal cover which does not bound any flat half-plane. Fix $\alpha \in (0, \tan(\frac{\pi}{10}))$. We start by looking at a specific loop for the complex for dihedral Artin groups, first in the odd case.

LEMMA 4.1. — *For every odd $m \geq 5$, there exists a locally geodesic oriented simple loop ℓ in X_m based at x_0 such that, if we denote $\ell^+, \ell^- \in \text{lk}_{x_0}(X_m)$ the images in the link of x_0 of the positive and negative sides of the loop ℓ , we have:*

- $X_m^a \cap \ell = X_m^b \cap \ell = \{x_0\}$,
- $\angle_{x_0}(a^+, \ell^+), \angle_{x_0}(a^-, \ell^-) > \frac{2\pi}{5}$.
- $\angle_{x_0}(b^-, \ell^+), \angle_{x_0}(b^+, \ell^-) > \frac{\pi}{5}$.
- $\angle_{x_0}(a^-, \ell^+), \angle_{x_0}(a^+, \ell^-), \angle_{x_0}(b^+, \ell^+), \angle_{x_0}(b^-, \ell^-) > \frac{4\pi}{5}$.

Proof. — In the polygonal complex T_m , consider the two m -gons P, P' adjacent to the base vertex e . Consider the vertex $x \in P$ such that e and x are “almost opposite” in P , i.e. form an angle of $\frac{2p\pi}{m}$ from the center of P , where $m = 2p + 1$. Consider the unique vertex $x' \in P'$ such that $(x, 0)$ and $(x', 0)$ are in the same $I_2(m)$ -orbit in Y_m , then x' and e form an angle of $\frac{-2p\pi}{m}$ from the center of P' (see Figure 4.1).

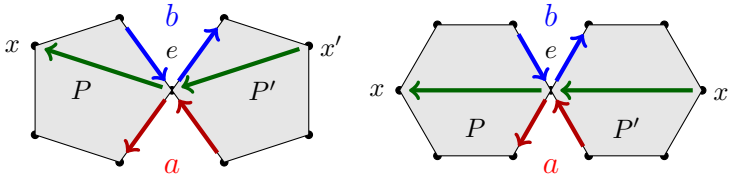


Figure 4.1. The construction of the loop in X_5 and in X_6

The piecewise Euclidean path from x' to x consisting of the two segments from x' to e and from e to x projects to a locally geodesic oriented simple loop ℓ in the image of $T_m \times \{0\}$ in X_m . By construction, we have $X_m^a \cap \ell = X_m^b \cap \ell = \{x_0\}$. Furthermore, we have

- $\angle_{x_0}(a^+, \ell^+) = \angle_{x_0}(a^-, \ell^-) > \frac{p\pi}{m} \geq \frac{2\pi}{5}$ and
- $\angle_{x_0}(b^-, \ell^+) = \angle_{x_0}(b^+, \ell^-) > \frac{(p-1)\pi}{m} \geq \frac{\pi}{5}$.

Furthermore, since the angle at e inside T_m between a^- and ℓ^+ is infinite, we deduce that in the whole space $Y_m = T_m \times \mathbb{R}$ we have $\sphericalangle_{x_0}(a^-, \ell^+) = \pi - \arctan(\alpha) > \frac{9\pi}{10} > \frac{4\pi}{5}$. Similarly

$$\sphericalangle_{x_0}(a^-, \ell^+) = \sphericalangle_{x_0}(a^+, \ell^-) = \sphericalangle_{x_0}(b^+, \ell^+) = \sphericalangle_{x_0}(b^-, \ell^-) > \frac{4\pi}{5}. \quad \square$$

We now turn to the even dihedral Artin groups.

LEMMA 4.2. — *For every even $m \geq 6$, there exists a locally geodesic oriented simple loop ℓ in X_m based at x_0 such that, if we denote $\ell^+, \ell^- \in \text{lk}_{x_0}(X_m)$ the images in the link of x_0 of the positive and negative sides of the loop ℓ , we have:*

- $X_m^a \cap \ell = X_m^b \cap \ell = \{x_0\}$,
- $\sphericalangle_{x_0}(a^+, \ell^+), \sphericalangle_{x_0}(a^-, \ell^-) > \frac{\pi}{3}$.
- $\sphericalangle_{x_0}(b^-, \ell^+), \sphericalangle_{x_0}(b^+, \ell^-) > \frac{\pi}{3}$.
- $\sphericalangle_{x_0}(a^-, \ell^+), \sphericalangle_{x_0}(a^+, \ell^-), \sphericalangle_{x_0}(b^+, \ell^+), \sphericalangle_{x_0}(b^-, \ell^-) > \frac{4\pi}{5}$.

Proof. — In the polygonal complex T_m , consider the two m -gons P, P' adjacent to the base vertex e . Consider the vertex $x \in P$ such that e and x are opposite in P . Consider the unique vertex $x' \in P'$ such that $(x, 0)$ and $(x', 0)$ are in the same $I_2(m)$ -orbit in Y_m , then x' and e are opposite in P' (see Figure 4.1).

The piecewise Euclidean path from x' to x consisting of the two segments from x' to e and from e to x projects to a locally geodesic oriented simple loop ℓ in the image of $T_m \times \{0\}$ in X_m . By construction, we have $X_m^a \cap \ell = X_m^b \cap \ell = \{x_0\}$. Furthermore, we have

$$\sphericalangle_{x_0}(a^+, \ell^+) = \sphericalangle_{x_0}(a^-, \ell^-) = \sphericalangle_{x_0}(b^-, \ell^+) = \sphericalangle_{x_0}(b^+, \ell^-) > \frac{(m-2)\pi}{2m} \geq \frac{\pi}{3}.$$

Furthermore, since the angle at e inside T_m between a^- and ℓ^+ is infinite, we deduce that in the whole space $Y_m = T_m \times \mathbb{R}$ we have $\sphericalangle_{x_0}(a^-, \ell^+) = \pi - \arctan(\alpha) > \frac{9\pi}{10} > \frac{4\pi}{5}$. Similarly

$$\sphericalangle_{x_0}(a^-, \ell^+) = \sphericalangle_{x_0}(a^+, \ell^-) = \sphericalangle_{x_0}(b^+, \ell^+) = \sphericalangle_{x_0}(b^-, \ell^-) > \frac{4\pi}{5}. \quad \square$$

We can now prove that the complex X_A has an isometry of rank one, thus proving the second part of Theorem 1.4.

THEOREM 4.3. — *Assume that $A(\Gamma)$ is an XXL type Artin group with at least three generators. Then there exists a locally geodesic loop in X_A whose lifts in \widehat{X}_A have rank 1, i.e. do not bound flat half-planes.*

Proof.

- If Γ has no edge, then $A(\Gamma)$ is the free group on S and X_A is a wedge of $|S|$ circles. So every geodesic in the tree $\widetilde{X_A}$ has rank 1.
- Assume now that Γ has at least one edge labeled by some odd number $m \geq 5$, between a and b . Fix $c \in S \setminus \{a, b\}$. Let $\ell_{ab} \subset X_{ab} \subset X_A$ denote the loop given by Lemma 4.1, and consider the oriented loop $X_c \subset X_A$. Then consider the concatenation $\ell = \ell_{ab} \cdot X_c$. We will prove that the angle at x_0 between the incoming loop c^- and the outgoing loop ℓ_{ab}^+ is bigger than π .

By construction, in the link of x_0 , every path from ℓ_{ab}^+ to c^- must pass through one of $\{a^+, a^-, b^+, b^-\}$. Let us compute the four quantities:

$$\begin{aligned} \sphericalangle_{x_0}(\ell_{ab}^+, a^+) + \sphericalangle_{x_0}(a^+, c^-) &> \frac{2\pi}{5} + \frac{3\pi}{5} = \pi, \\ \sphericalangle_{x_0}(\ell_{ab}^+, a^-) + \sphericalangle_{x_0}(a^-, c^-) &> \frac{4\pi}{5} + \frac{4\pi}{5} > \pi, \\ \sphericalangle_{x_0}(\ell_{ab}^+, b^+) + \sphericalangle_{x_0}(b^+, c^-) &> \frac{4\pi}{5} + \frac{3\pi}{5} > \pi, \\ \sphericalangle_{x_0}(\ell_{ab}^+, b^-) + \sphericalangle_{x_0}(b^-, c^-) &> \frac{\pi}{5} + \frac{4\pi}{5} = \pi. \end{aligned}$$

We deduce that the distance in the link of x_0 between ℓ_{ab}^+ and c^- is bigger than π . Similarly, the distance in the link of x_0 between ℓ_{ab}^- and c^+ is also bigger than π .

- Assume now that Γ has at least one edge, and that all edges are labeled by even numbers. Consider some edge between a and b , labeled by some even $m \geq 6$. Fix $c \in S \setminus \{a, b\}$. Let $\ell_{ab} \subset X_{ab} \subset X_A$ denote the loop given by Lemma 4.2, and consider the oriented loop $X_c \subset X_A$. Then consider the concatenation $\ell = \ell_{ab} \cdot X_c$. We will prove that the angle at x_0 between the incoming loop c^- and the outgoing loop ℓ_{ab}^+ is bigger than π .

By construction, in the link of x_0 , every path from ℓ_{ab}^+ to c^- must pass through one of $\{a^+, a^-, b^+, b^-\}$. Let us compute the four quantities:

$$\begin{aligned} \sphericalangle_{x_0}(\ell_{ab}^+, a^+) + \sphericalangle_{x_0}(a^+, c^-) &> \frac{\pi}{3} + \frac{2\pi}{3} = \pi, \\ \sphericalangle_{x_0}(\ell_{ab}^+, a^-) + \sphericalangle_{x_0}(a^-, c^-) &> \frac{4\pi}{5} + \frac{4\pi}{5} > \pi, \\ \sphericalangle_{x_0}(\ell_{ab}^+, b^+) + \sphericalangle_{x_0}(b^+, c^-) &> \frac{4\pi}{5} + \frac{2\pi}{3} > \pi, \\ \sphericalangle_{x_0}(\ell_{ab}^+, b^-) + \sphericalangle_{x_0}(b^-, c^-) &> \frac{\pi}{3} + \frac{4\pi}{5} > \pi. \end{aligned}$$

We deduce that the distance in the link of x_0 between ℓ_{ab}^+ and c^- is bigger than π . Similarly, the distance in the link of x_0 between ℓ_{ab}^- and c^+ is also bigger than π .

In conclusion, in each of the last two cases, ℓ is a locally geodesic loop in X_A such that the angle at (each of the two passings at) x_0 is bigger than π . In particular, any lift of ℓ in \widetilde{X}_A does not bound a flat half-plane, so it has rank 1. \square

BIBLIOGRAPHY

- [1] C. R. ABBOTT & F. DAHMANI, “Property P_{naive} for acylindrically hyperbolic groups”, *Math. Z.* **291** (2019), no. 1-2, p. 555-568.
- [2] A. BARTELS & W. LÜCK, “The Borel conjecture for hyperbolic and CAT(0)-groups”, *Ann. of Math. (2)* **175** (2012), no. 2, p. 631-689.
- [3] R. W. BELL, “Three-dimensional FC Artin groups are CAT(0)”, *Geom. Dedicata* **113** (2005), p. 21-53.
- [4] M. BESTVINA, “Non-positively curved aspects of Artin groups of finite type”, *Geom. Topol.* **3** (1999), p. 269-302.
- [5] M. BESTVINA & K. FUJIWARA, “Bounded cohomology of subgroups of mapping class groups”, *Geom. Topol.* **6** (2002), p. 69-89.
- [6] B. H. BOWDITCH, “Tight geodesics in the curve complex”, *Invent. Math.* **171** (2008), no. 2, p. 281-300.
- [7] N. BRADY & J. CRISP, “Two-dimensional Artin groups with CAT(0) dimension three”, in *Proceedings of the Conference on Geometric and Combinatorial Group Theory, Part I (Haifa, 2000)*, vol. 94, 2002, p. 185-214.
- [8] T. BRADY, “Artin groups of finite type with three generators”, *Michigan Math. J.* **47** (2000), no. 2, p. 313-324.
- [9] T. BRADY & J. MCCAMMOND, “Three-generator Artin groups of large type are biautomatic”, *J. Pure Appl. Algebra* **151** (2000), no. 1, p. 1-9.
- [10] ———, “Braids, posets and orthoschemes”, *Algebr. Geom. Topol.* **10** (2010), no. 4, p. 2277-2314.
- [11] M. CALVEZ & B. WIEST, “Acylindrical hyperbolicity and Artin-Tits groups of spherical type”, *Geom. Dedicata* **191** (2017), p. 199-215.
- [12] P.-E. CAPRACE & M. SAGEEV, “Rank rigidity for CAT(0) cube complexes”, *Geom. Funct. Anal.* **21** (2011), no. 4, p. 851-891.
- [13] R. CHARNEY, “Problems related to Artin groups”, American Institute of Mathematics, https://people.brandeis.edu/~charney/papers/Artin_probs.pdf.
- [14] R. CHARNEY & M. W. DAVIS, “Finite $K(\pi, 1)$ s for Artin groups”, in *Prospects in topology (Princeton, NJ, 1994)*, Ann. of Math. Stud., vol. 138, Princeton Univ. Press, Princeton, NJ, 1995, p. 110-124.
- [15] R. CHARNEY & R. MORRIS-WRIGHT, “Artin groups of infinite type: trivial centers and acylindrical hyperbolicity”, <https://arxiv.org/abs/1805.04028>, 2018.
- [16] I. CHATTERJI & A. MARTIN, “A note on the acylindrical hyperbolicity of groups acting on CAT(0) cube complexes”, <https://arxiv.org/abs/1610.06864>, 2016.
- [17] L. CIOBANU, D. F. HOLT & S. REES, “Rapid decay and Baum–Connes for large type Artin groups”, *Trans. Amer. Math. Soc.* **368** (2016), no. 9, p. 6103-6129.

- [18] F. DAHMANI, V. GUIARDEL & D. OSIN, “Hyperbolically embedded subgroups and rotating families in groups acting on hyperbolic spaces”, <https://arxiv.org/abs/1111.7048>, 2011.
- [19] T. HAETTEL, “Virtually cocompactly cubulated Artin–Tits groups”, *Int. Math. Res. Not. IMRN* (2021), no. 4, p. 2919-2961.
- [20] T. HAETTEL, D. KIELAK & P. SCHWER, “The 6-strand braid group is CAT(0)”, *Geom. Dedicata* **182** (2016), p. 263-286.
- [21] J. HUANG & D. OSAJDA, “Helly meets Garside and Artin”, <https://arxiv.org/abs/1904.09060>, 2019.
- [22] ———, “Metric systolicity and two-dimensional Artin groups”, *Math. Ann.* **374** (2019), no. 3-4, p. 1311-1352.
- [23] V. LAFFORGUE, “ K -théorie bivariante pour les algèbres de Banach et conjecture de Baum–Connes”, *Invent. Math.* **149** (2002), no. 1, p. 1-95.
- [24] H. A. MASUR & Y. N. MINSKY, “Geometry of the complex of curves. I. Hyperbolicity”, *Invent. Math.* **138** (1999), no. 1, p. 103-149.
- [25] J. MCCAMMOND, “The mysterious geometry of Artin groups”, *Winter Braids Lect. Notes* **4** (2017), no. Winter Braids VII (Caen, 2017), article no. 1 (30 pages).
- [26] D. OSIN, “Acylically hyperbolic groups”, *Trans. Amer. Math. Soc.* **368** (2016), no. 2, p. 851-888.
- [27] ———, “Groups acting acylindrically on hyperbolic spaces”, <https://arxiv.org/abs/1712.00814>, 2017.
- [28] A. SISTO, “Contracting elements and random walks”, *J. Reine Angew. Math.* **742** (2018), p. 79-114.
- [29] C. WEGNER, “The K -theoretic Farrell–Jones conjecture for CAT(0)-groups”, *Proc. Amer. Math. Soc.* **140** (2012), no. 3, p. 779-793.

Manuscrit reçu le 25 juillet 2019,
révisé le 5 janvier 2021,
accepté le 25 janvier 2021.

Thomas HAETTEL
Université de Montpellier
IMAG, Univ Montpellier, CNRS, France
Place Eugène Bataillon
34090 Montpellier
France
thomas.haettel@umontpellier.fr