

## GUARANTEED AND ROBUST *A POSTERIORI* ERROR ESTIMATES FOR SINGULARLY PERTURBED REACTION–DIFFUSION PROBLEMS<sup>\*, \*\*, \*\*\*</sup>

IBRAHIM CHEDDADI<sup>1, 2</sup>, RADEK FUČÍK<sup>3</sup>, MARIANA I. PRIETO<sup>4</sup>  
AND MARTIN VOHRALÍK<sup>5, 6</sup>

**Abstract.** We derive *a posteriori* error estimates for singularly perturbed reaction–diffusion problems which yield a guaranteed upper bound on the discretization error and are fully and easily computable. Moreover, they are also locally efficient and robust in the sense that they represent local lower bounds for the actual error, up to a generic constant independent in particular of the reaction coefficient. We present our results in the framework of the vertex-centered finite volume method but their nature is general for any conforming method, like the piecewise linear finite element one. Our estimates are based on a  $\mathbf{H}(\text{div})$ -conforming reconstruction of the diffusive flux in the lowest-order Raviart–Thomas–Nédélec space linked with mesh dual to the original simplicial one, previously introduced by the last author in the pure diffusion case. They also rely on elaborated Poincaré, Friedrichs, and trace inequalities-based auxiliary estimates designed to cope optimally with the reaction dominance. In order to bring down the ratio of the estimated and actual overall energy error as close as possible to the optimal value of one, independently of the size of the reaction coefficient, we finally develop the ideas of local minimizations of the estimators by local modifications of the reconstructed diffusive flux. The numerical experiments presented confirm the guaranteed upper bound, robustness, and excellent efficiency of the derived estimates.

**Mathematics Subject Classification.** 65N15, 65N30, 76S05.

Received March 31, 2008. Revised November 13, 2008.

Published online April 30, 2009.

---

*Keywords and phrases.* Vertex-centered finite volume/finite volume element/box method, singularly perturbed reaction–diffusion problem, *a posteriori* error estimates, guaranteed upper bound, robustness.

\* The second author has been partly supported by the project “Applied Mathematics in Technical and Physical Sciences” MSM 6840770010 of the Ministry of Education of the Czech Republic.

\*\* The third author has been supported by CONICET, under grant PIP 5478.

\*\*\* The last author has been partly supported by the GNR MoMaS project “Numerical Simulations and Mathematical Modeling of Underground Nuclear Waste Disposal”, PACEN/CNRS, ANDRA, BRGM, CEA, EdF, IRSN, France.

<sup>1</sup> Univ. Grenoble and CNRS, Laboratoire Jean Kuntzmann, 51 rue des Mathématiques, 38400 Saint Martin d’Hères, France.

<sup>2</sup> INRIA Grenoble-Rhône-Alpes, Inovallée, 655 avenue de l’Europe, Montbonnot, 38334 Saint Ismier Cedex, France.  
[ibrahim.cheddadi@imag.fr](mailto:ibrahim.cheddadi@imag.fr)

<sup>3</sup> Department of Mathematics, Faculty of Nuclear Sciences and Physical Engineering, Czech Technical University in Prague, Trojanova 13, 12000 Prague, Czech Republic. [fucik@fjfi.cvut.cz](mailto:fucik@fjfi.cvut.cz)

<sup>4</sup> Departamento de Matemática, Facultad de Ciencias Exactas y Naturales, Universidad de Buenos Aires, Intendente Güiraldes 2160, Ciudad Universitaria, C1428EGA, Argentina. [mprieto@dm.uba.ar](mailto:mprieto@dm.uba.ar)

<sup>5</sup> UPMC Univ. Paris 06, UMR 7598, Laboratoire Jacques-Louis Lions, 75005 Paris, France.

<sup>6</sup> CNRS, UMR 7598, Laboratoire Jacques-Louis Lions, 75005 Paris, France. [vohralik@ann.jussieu.fr](mailto:vohralik@ann.jussieu.fr)

## 1. INTRODUCTION

We consider in this paper the model reaction–diffusion problem

$$-\Delta p + rp = f \quad \text{in } \Omega, \tag{1.1a}$$

$$p = 0 \quad \text{on } \partial\Omega, \tag{1.1b}$$

where  $\Omega \subset \mathbb{R}^d$ ,  $d = 2, 3$ , is a polygonal (polyhedral) domain (open, bounded, and connected set),  $r \in L^\infty(\Omega)$ ,  $r \geq 0$ , is a reaction coefficient, and  $f \in L^2(\Omega)$  is a source term. We denote respectively by  $c_{r,S}$  and  $C_{r,S}$  the best nonnegative constants such that  $c_{r,S} \leq r \leq C_{r,S}$  a.e. on a given subdomain  $S$  of  $\Omega$ . Our purpose is to derive optimal *a posteriori* error estimates for vertex-centered finite volume approximations of problem (1.1a)–(1.1b), with extensions to other conforming methods like the piecewise linear finite element one.

Averaging *a posteriori* error estimates like the Zienkiewicz–Zhu [28] one are quite popular for the purpose of adaptive mesh refinement in boundary value problems simulations but actually do not give a guaranteed upper bound on the error made in a numerical approximation. Here and throughout the text, an estimator  $\eta$  represents a *guaranteed upper bound* of the error  $e$  if  $e \leq \eta$ . More severely, for problem (1.1a)–(1.1b) in particular, they are not *robust* in the sense that the ratio of the estimated to the true energy error blows up for high values of  $r$ . The improvement of the equilibrated residual method to singularly perturbed reaction–diffusion problems by Ainsworth and Babuška [1] does not have this drawback and yields robust estimates. It also gives a guaranteed upper bound but this bound is actually not computable, since it is based on a solution of an infinite-dimensional local problem on each mesh element. Approximations to these problems have to be used in practice, which rises the question of preservation of the guaranteed upper bound and even of the robustness. This question, along with a robust extension to anisotropic meshes, is treated by Grosman in [9]. By introducing suitable finite-dimensional approximations of the local infinite-dimensional problems, Grosman proves the robustness of the final practical estimate. Moreover, he also shows that these approximations yield an estimate which is equivalent with the original infinite-dimensional one up to an unknown constant, independent of the mesh size  $h$  and the reaction parameter  $r$ . He thus ensures the reliability of the final discrete version of the equilibrated residual method, the presented numerical results are excellent, but there can still be slight violations of the guaranteed upper bound, as one can notice it in [9], Table 1. Moreover, this approach seems rather complicated and computationally quite expensive, although the *evaluation cost*, *i.e.*, the number of operations necessary to compute the estimate, remains linear in the number of unknowns.

Verfürth in [21] derived robust residual *a posteriori* error estimates for singularly perturbed reaction–diffusion problems which are explicitly and easily computable. Unfortunately, these estimates are not guaranteed in the sense that they contain various undetermined constants; they are suitable for adaptive mesh refinement but not for the actual error control. An extension of this result to anisotropic meshes is then given by Kunert [12]. Recently, Repin and Sauter [17] or Korotov [11] presented estimates which do give a guaranteed upper bound also for problem (1.1a)–(1.1b). However, for accurate error control, computational amount comparable to that necessary to the computation of the approximation itself is required and it is quite likely that this amount will grow for growing coefficient  $r$ , which does not match with the term robustness. Coincidentally, no *(local) efficiency* in the sense that the estimate also represents a (local) lower bound for the actual error, up to a generic constant, is proved in these references. Guaranteed and locally computable estimators for problem (1.1a)–(1.1b) are also arrived at by Vejchodský [20], but, once again, no lower bound is proved and the estimate is not expected to be robust.

A new family of estimates was established recently for various numerical methods in [7,24–26]. These estimates are explicitly and easily computable and yield a guaranteed upper bound together with local efficiency; the estimates of [25] for the pure diffusion case are moreover completely robust with respect to an inhomogeneous diffusion coefficient. In the conforming case, these estimates develop ideas going back to the Prager–Synge equality [16], *cf.* also [13].

The purpose of this paper is to extend the estimates of [25] to the singularly perturbed reaction–diffusion problem (1.1a)–(1.1b). We first in Section 3, after giving the necessary preliminaries in Section 2, present

an abstract *a posteriori* error estimate for conforming (contained in  $H_0^1(\Omega)$ ) approximations to problem (1.1a)–(1.1b). This estimate is shown to be optimal, *i.e.*, equivalent to the energy error, and gives the basic framework for the further study. We start in Section 4 by presenting the ideas of the diffusive flux reconstruction in the lowest-order Raviart–Thomas–Nédélec space linked with the mesh dual to the original simplicial one and prove some important Poincaré, Friedrichs, and trace inequalities-based auxiliary estimates designed to cope optimally with the reaction dominance. Then the first main result, an *a posteriori* error estimate which is explicitly and easily computable and which gives a guaranteed upper bound on the overall energy error, is stated and proved. We present all these results in a quite general setting of conforming approximations and detail their application to the vertex-centered finite volume method. We finally in Section 5 present our second main result, the local efficiency and robustness, with respect to reaction dominance and also with respect to spatial variation of  $r$  under the condition that  $r$  is piecewise constant on the dual mesh, of the derived *a posteriori* error estimates. We there actually show that our estimates represent, up to a generic constant, local lower bounds for those of Verfürth [21].

The numerical experiments of Section 6, using the package FreeFem++ [10], where our estimates are implemented, confirm all the theoretical results, *i.e.*, the guaranteed upper bound, local efficiency, robustness, and linear evaluation cost. The only element missing is the *asymptotic exactness*, *i.e.*, the fact that *effectivity index*, given as the ratio of the estimated to the actual error, is not as close to the optimal value of 1 as one would have wished (it ranges between 2 and 6 in the presented results). This phenomenon has been already observed in the pure diffusion case in [6,25]. A remedy to this has been proposed in these references, consisting in local minimizations of the estimators by local modifications of the reconstructed diffusive flux. The final estimate is then given as a local minimum of the estimator constructed in Section 4 and of the minimized one, so that in particular the guaranteed upper bound of Section 4 and the robust local efficiency of Section 5 hold true. A full local minimization over the available degrees of freedom has been proposed and studied in [6]. Such a minimization leads to the solution of a local linear system for each vertex (of size equal to twice the number of sides sharing the given vertex); although the cost remains linear, the complexity is indeed increased. The solution of local linear systems was completely avoided by the simplified minimization approach of [25], Section 7. We extend in Appendix the two approaches to the singularly perturbed reaction–diffusion problem (1.1a)–(1.1b). It turns out that the completely explicit simplified local minimization of [25], Section 7, gives almost always the best results, so it can for its simplicity and efficiency be recommended for practical computations. In particular, with its use, the effectivity index in the presented results ranges between 1 and 3 for all the meshes from the coarsest to the finest and from uniformly to adaptively refined and for all values of the reaction coefficient  $r$ . We finally remark that the homogeneous Dirichlet boundary condition is considered only for simplicity of exposition. For inhomogeneous Dirichlet and Neumann boundary conditions in the present setting (with  $r = 0$ ), we refer to [27].

## 2. PRELIMINARIES

We set up in this section the considered meshes description and all notation and describe the continuous and discrete problems we shall work with.

### 2.1. Notation

We shall work in this paper with triangulations  $\mathcal{T}_h$  which for all  $h > 0$  consists of simplices  $K$  such that  $\bar{\Omega} = \bigcup_{K \in \mathcal{T}_h} K$  and which are conforming, *i.e.*, if  $K, L \in \mathcal{T}_h$ ,  $K \neq L$ , then  $K \cap L$  is either an empty set or a common face, edge, or vertex of  $K$  and  $L$ . Let  $h_K$  denote the diameter of  $K$  and let  $h := \max_{K \in \mathcal{T}_h} h_K$ . We next denote by  $\mathcal{E}_h$  the set of all sides of  $\mathcal{T}_h$ , by  $\mathcal{E}_h^{\text{int}}$  the set of interior, by  $\mathcal{E}_h^{\text{ext}}$  the set of exterior, and by  $\mathcal{E}_K$  the set of all the sides of an element  $K \in \mathcal{T}_h$ ;  $h_\sigma$  stands for the diameter of  $\sigma \in \mathcal{E}_h$ . Finally, we denote by  $\mathcal{V}_h$  ( $\mathcal{V}_h^{\text{int}}$ ) the set of all (interior) vertices of  $\mathcal{T}_h$  and define for  $V \in \mathcal{V}_h$  and  $\sigma \in \mathcal{E}_h$ , respectively,  $\mathcal{T}_V := \{L \in \mathcal{T}_h; L \cap V \neq \emptyset\}$ ,  $\mathcal{T}_\sigma := \{L \in \mathcal{T}_h; \sigma \in \mathcal{E}_L\}$ .

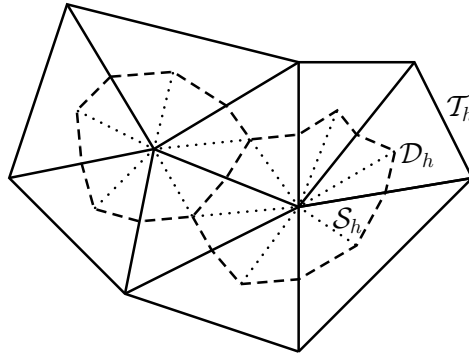


FIGURE 1. Original simplicial mesh  $\mathcal{T}_h$ , the associated dual mesh  $\mathcal{D}_h$ , and the fine simplicial mesh  $\mathcal{S}_h$ .

We shall next consider dual partitions  $\mathcal{D}_h$  of  $\Omega$  such that  $\bar{\Omega} = \bigcup_{D \in \mathcal{D}_h} D$  and such that each  $V \in \mathcal{V}_h$  is in exactly one  $D_V \in \mathcal{D}_h$ . The notation  $V_D$  stands inversely for the vertex associated with a given  $D \in \mathcal{D}_h$ . When  $d = 2$ , we construct  $\mathcal{D}_h$  as follows. For each vertex  $V$ , we consider all the triangles  $K \in \mathcal{T}_h$ . Then, the dual volume  $D_V$  associated to  $V$  is the polygon which has these triangle barycentres and the midpoints of the edges passing through  $V$  as vertices. An example of such a dual volume is shown in Figure 1. If  $d = 3$ , in each tetrahedron, face barycentres are first connected with face vertices and face edges midpoints. Then small tetrahedra are formed by the resulting triangles in each face and the tetrahedron barycentre. Finally, the union of all small tetrahedra sharing a given vertex  $V_D$  is the dual volume  $D$ . We use the notation  $\mathcal{F}_h$  for all sides of  $\mathcal{D}_h$ ,  $\mathcal{F}_h^{\text{int}}$  ( $\mathcal{F}_h^{\text{ext}}$ ) for all interior (exterior) sides of  $\mathcal{D}_h$ , and  $\mathcal{D}_h^{\text{int}}$  ( $\mathcal{D}_h^{\text{ext}}$ ) to denote the dual volumes associated with vertices from  $\mathcal{V}_h^{\text{int}}$  ( $\mathcal{V}_h^{\text{ext}}$ ).

Finally, in order to define our *a posteriori* error estimates, we need a second simplicial triangulation  $\mathcal{S}_h$  of  $\Omega$ . This is given by  $\mathcal{S}_h := \bigcup_{D \in \mathcal{D}_h} \mathcal{S}_D$ , where the local triangulation  $\mathcal{S}_D$  of  $D \in \mathcal{D}_h$  is given as shown in Figure 1 if  $d = 2$  and by the “small” tetrahedra if  $d = 3$ . We will use the notation  $\mathcal{G}_h$  for all sides of  $\mathcal{S}_h$  and  $\mathcal{G}_h^{\text{int}}$  ( $\mathcal{G}_h^{\text{ext}}$ ) for all interior (exterior) sides of  $\mathcal{S}_h$ . Also, we will note  $\mathcal{G}_D^{\text{int}}$  all  $\sigma \in \mathcal{G}_h^{\text{int}}$  contained in the interior of a  $D \in \mathcal{D}_h$ .

Next, for  $K \in \mathcal{T}_h$ ,  $\mathbf{n}$  always denotes its exterior normal vector and we employ the notation  $\mathbf{n}_\sigma$  for a normal vector of a side  $\sigma \in \mathcal{E}_h$ , whose orientation is chosen arbitrarily but fixed for interior sides and coinciding with the exterior normal of  $\Omega$  for exterior sides. For a function  $\varphi$  and a side  $\sigma \in \mathcal{E}_h^{\text{int}}$  shared by  $K, L \in \mathcal{T}_h$  such that  $\mathbf{n}_\sigma$  points from  $K$  to  $L$ , we define the jump operator  $[[\cdot]]$  by

$$[[\varphi]] := (\varphi|_K)|_\sigma - (\varphi|_L)|_\sigma. \tag{2.1}$$

We put  $[[\varphi]] := 0$  for any  $\sigma \in \mathcal{E}_h^{\text{ext}}$ . For  $\sigma = \sigma_{K,L} \in \mathcal{E}_h^{\text{int}}$ , we define the average operator  $\{\{\cdot\}\}$  by

$$\{\{\varphi\}\} := \frac{1}{2}(\varphi|_K)|_\sigma + \frac{1}{2}(\varphi|_L)|_\sigma, \tag{2.2}$$

whereas for  $\sigma \in \mathcal{E}_h^{\text{ext}}$ ,  $\{\{\varphi\}\} := \varphi|_\sigma$ . We use the same type of notation also for the meshes  $\mathcal{D}_h$  and  $\mathcal{S}_h$ .

In what concerns functional notation, we denote by  $(\cdot, \cdot)_S$  the  $L^2$ -scalar product on  $S$  and by  $\|\cdot\|_S$  the associated norm; when  $S = \Omega$ , the index is dropped off. We denote by  $|S|$  the Lebesgue measure of  $S$ , by  $|\sigma|$  the  $(d - 1)$ -dimensional Lebesgue measure of  $\sigma \subset \mathbb{R}^{d-1}$ , and in particular by  $|\mathbf{s}|$  the length of a segment  $\mathbf{s}$ . Next,  $H^1(S)$  is the Sobolev space of functions with square-integrable weak derivatives and  $H_0^1(S)$  is its subspace of functions with traces vanishing on  $\partial S$ . Finally,  $\mathbf{H}(\text{div}, S)$  is the space of functions with square-integrable weak divergences,  $\mathbf{H}(\text{div}, S) = \{\mathbf{v} \in \mathbf{L}^2(S); \nabla \cdot \mathbf{v} \in L^2(S)\}$ , and  $\langle \cdot, \cdot \rangle_{\partial S}$  stands for the appropriate duality pairing on  $\partial S$ .

2.2. Continuous and discrete problems

For problem (1.1a)–(1.1b), we define a bilinear form  $\mathcal{B}$  by

$$\mathcal{B}(p, \varphi) := (\nabla p, \nabla \varphi) + (r^{1/2}p, r^{1/2}\varphi),$$

where  $p, \varphi \in H_0^1(\Omega)$ , and the associated energy norm by

$$\|\varphi\|^2 := \mathcal{B}(\varphi, \varphi). \tag{2.3}$$

The standard weak formulation for this problem is then to find  $p \in H_0^1(\Omega)$  such that

$$\mathcal{B}(p, \varphi) = (f, \varphi) \quad \forall \varphi \in H_0^1(\Omega). \tag{2.4}$$

For the approximation of problem (1.1a)–(1.1b), we will consider the vertex-centered finite volume method, also known as the finite volume element or the box method. It reads: find  $p_h \in X_h^0$  such that

$$-\langle \nabla p_h \cdot \mathbf{n}, 1 \rangle_{\partial D} + (rp_h, 1)_D = (f, 1)_D \quad \forall D \in \mathcal{D}_h^{\text{int}}, \tag{2.5}$$

where

$$X_h^0 := \{ \varphi_h \in H_0^1(\Omega); \varphi_h|_K \in \mathbb{P}_1(K) \quad \forall K \in \mathcal{T}_h \}$$

with  $\mathbb{P}_1(K)$  the space of linear polynomials on  $K \in \mathcal{T}_h$ . This method for the approximation of problem (1.1a)–(1.1b) is very closely related to the piecewise linear finite element one, which consists in finding  $p_h \in X_h^0$  such that

$$\mathcal{B}(p_h, \varphi_h) = (f, \varphi_h) \quad \forall \varphi_h \in X_h^0.$$

In particular, for the considered dual meshes, the discretization of the diffusion term completely coincides, cf. [2], Lemma 3, [14], Lemma 2, or [25], Lemma 3.8. Similarly, if  $f$  is piecewise constant on  $\mathcal{T}_h$ , the discretization of the right-hand side again coincides, see [14], Lemma 2, or [25], Lemma 3.11, whereas the discretization of the reaction term only differs by a numerical quadrature. We refer to [25] for the relations to other methods yielding an approximation in the space  $X_h^0$ .

3. OPTIMAL ABSTRACT FRAMEWORK FOR *A POSTERIORI* ERROR ESTIMATION

In this section, we recall the basic results of [7,24], giving an optimal abstract framework for *a posteriori* error estimation in problem (1.1a)–(1.1b). For their simplicity and for the sake of completeness of the present paper, we include also the proofs.

3.1. Abstract estimate

The first result is the following abstract upper bound:

**Theorem 3.1** (abstract *a posteriori* error estimate). *Let  $p$  be the weak solution of problem (1.1a)–(1.1b) given by (2.4) and let  $p_h \in H_0^1(\Omega)$  be arbitrary. Then*

$$\|p - p_h\| \leq \inf_{\mathbf{t} \in \mathbf{H}(\text{div}, \Omega)} \sup_{\varphi \in H_0^1(\Omega), \|\varphi\|=1} \{ (f - \nabla \cdot \mathbf{t} - rp_h, \varphi) - (\nabla p_h + \mathbf{t}, \nabla \varphi) \}. \tag{3.1}$$

*Proof.* We first notice that according to the definition of the energy norm by (2.3),

$$\|p - p_h\| = \mathcal{B} \left( p - p_h, \frac{p - p_h}{\|p - p_h\|} \right).$$

Here, as well as in the sequel, we treat the possible occurrence of 0/0 as 0 for the simplicity of notation. Next, as  $\varphi := (p - p_h)/\|p - p_h\| \in H_0^1$ , we have  $\mathcal{B}(p, \varphi) = (f, \varphi)$  by (2.4). So, for any  $\mathbf{t} \in \mathbf{H}(\text{div}, \Omega)$ , adding and subtracting  $(\mathbf{t}, \nabla\varphi)$  and using the definition of  $\mathcal{B}(\cdot, \cdot)$ , we have

$$\begin{aligned} \|p - p_h\| &= (f, \varphi) - \mathcal{B}(p_h, \varphi) \\ &= (f, \varphi) - (\nabla p_h, \nabla\varphi) - (rp_h, \varphi) \\ &= (f, \varphi) - (\nabla p_h + \mathbf{t}, \nabla\varphi) - (rp_h, \varphi) + (\mathbf{t}, \nabla\varphi) \\ &= (f - \nabla \cdot \mathbf{t} - rp_h, \varphi) - (\nabla p_h + \mathbf{t}, \nabla\varphi). \end{aligned} \tag{3.2}$$

Here, we have also applied the Green theorem yielding  $(\mathbf{t}, \nabla\varphi) = -(\nabla \cdot \mathbf{t}, \varphi)$ . As  $\mathbf{t} \in \mathbf{H}(\text{div}, \Omega)$  was chosen arbitrarily and  $\|\varphi\| = 1$ , this concludes the proof.  $\square$

### 3.2. Efficiency of the abstract estimate

Concerning the efficiency of the above estimate, we have:

**Theorem 3.2** (global efficiency of the abstract estimate). *Let  $p$  be the weak solution of problem (1.1a)–(1.1b) given by (2.4) and let  $p_h \in H_0^1(\Omega)$  be arbitrary. Then*

$$\inf_{\mathbf{t} \in \mathbf{H}(\text{div}, \Omega)} \sup_{\varphi \in H_0^1(\Omega), \|\varphi\|=1} \{(f - \nabla \cdot \mathbf{t} - rp_h, \varphi) - (\nabla p_h + \mathbf{t}, \nabla\varphi)\} \leq \|p - p_h\|.$$

*Proof.* We add and subtract the term  $(rp, \varphi)$ , put  $\mathbf{t} = -\nabla p$ , and use the fact that  $p$  is the weak solution to obtain

$$\begin{aligned} &\inf_{\mathbf{t} \in \mathbf{H}(\text{div}, \Omega)} \sup_{\varphi \in H_0^1(\Omega), \|\varphi\|=1} \{(f - \nabla \cdot \mathbf{t} - rp_h, \varphi) - (\nabla p_h + \mathbf{t}, \nabla\varphi)\} \\ &= \inf_{\mathbf{t} \in \mathbf{H}(\text{div}, \Omega)} \sup_{\varphi \in H_0^1(\Omega), \|\varphi\|=1} \{(f - \nabla \cdot \mathbf{t} - rp, \varphi) - (\nabla p_h + \mathbf{t}, \nabla\varphi) + (rp - rp_h, \varphi)\} \\ &\leq \sup_{\varphi \in H_0^1(\Omega), \|\varphi\|=1} \{(f + \Delta p - rp, \varphi) - (\nabla p_h - \nabla p, \nabla\varphi) + (rp - rp_h, \varphi)\} \\ &= \sup_{\varphi \in H_0^1(\Omega), \|\varphi\|=1} \{(\nabla(p - p_h), \nabla\varphi) + (r(p - p_h), \varphi)\}. \end{aligned}$$

The proof is concluded by using the Cauchy–Schwarz inequality, the fact that  $\|\varphi\| = 1$ , and the definition of the energy norm (2.3).  $\square$

## 4. GUARANTEED A POSTERIORI ERROR ESTIMATES

We derive here a locally computable version of the abstract *a posteriori* estimate of the previous section. The first step is to properly choose a reconstructed diffusive flux  $\mathbf{t}_h \in \mathbf{H}(\text{div}, \Omega)$  to be used as  $\mathbf{t} \in \mathbf{H}(\text{div}, \Omega)$  in Theorem 3.1. We next recall the Poincaré, Friedrichs, and trace inequalities and derive some auxiliary estimates that will turn out later as crucial in order to obtain robustness. We finally state our guaranteed *a posteriori* error estimates.

### 4.1. Diffusive flux reconstruction

We present here a particular diffusive flux reconstruction  $\mathbf{t}_h \in \mathbf{H}(\text{div}, \Omega)$  in the vertex-centered finite volume method (2.5), which will be crucial in our *a posteriori* error estimates. We define it in the lowest-order Raviart–Thomas–Nédélec space over the fine simplicial mesh  $\mathcal{S}_h$  introduced in Section 2. The space  $\mathbf{RTN}(\mathcal{S}_h)$  is a space of vector functions having on each  $K \in \mathcal{S}_h$  the form  $(a_K + d_K x, b_K + d_K y)^t$  if  $d = 2$  and  $(a_K + d_K x, b_K + d_K y, c_K + d_K z)^t$  if  $d = 3$ . Note that the requirement  $\mathbf{RTN}(\mathcal{S}_h) \subset \mathbf{H}(\text{div}, \Omega)$  imposes the continuity of the normal trace

across all  $\sigma \in \mathcal{G}_h^{\text{int}}$  and recall that  $\nabla \cdot \mathbf{v}_h$  is constant on all  $K \in \mathcal{S}_h$ , that  $\mathbf{v}_h \cdot \mathbf{n}_\sigma$  is constant on all  $\sigma \in \mathcal{G}_h$ , and that these side fluxes also represent the degrees of freedom of  $\mathbf{RTN}(\mathcal{S}_h)$ . For more details, we refer to Brezzi and Fortin [4] or Roberts and Thomas [18].

Let us thus define  $\mathbf{t}_h \in \mathbf{RTN}(\mathcal{S}_h)$  by

$$\mathbf{t}_h \cdot \mathbf{n}_\sigma = -\{\!\{ \nabla p_h \cdot \mathbf{n}_\sigma \}\!\} \quad \forall \sigma \in \mathcal{G}_h, \tag{4.1}$$

where  $\{\!\{ \cdot \}\!\}$  is the average operator defined in Section 2. Note that  $\mathbf{t}_h \cdot \mathbf{n}_\sigma$  is given directly by  $-\nabla p_h \cdot \mathbf{n}_\sigma$  for such  $\sigma \in \mathcal{G}_h$  where there is no jump in  $\nabla p_h$ . This set is given by all the sides  $\sigma \in \mathcal{G}_h$  which are in the interior of some  $K \in \mathcal{T}_h$  or at the boundary of  $\Omega$ , in particular, by all the sides  $\sigma \in \mathcal{G}_h$  contained in  $\partial D$  for some  $D \in \mathcal{D}_h$ . In the other cases, we may think of  $\mathbf{t}_h$  as of a  $\mathbf{H}(\text{div}, \Omega)$ -conforming smoothing of  $-\nabla p_h$ , which itself is not contained in  $\mathbf{H}(\text{div}, \Omega)$ . The following important property holds for  $\mathbf{t}_h$  constructed in this way:

**Lemma 4.1** (reconstructed diffusive flux). *Let  $p_h \in X_h^0$  be given by the vertex-centered finite volume method (2.5) and let  $\mathbf{t}_h \in \mathbf{RTN}(\mathcal{S}_h)$  be given by (4.1). Then*

$$(\nabla \cdot \mathbf{t}_h + rp_h, 1)_D = (f, 1)_D \quad \forall D \in \mathcal{D}_h^{\text{int}}.$$

*Proof.* The local conservativity of the vertex-centered finite volume method (2.5) and the definition (4.1) of  $\mathbf{t}_h$  imply that

$$\langle \mathbf{t}_h \cdot \mathbf{n}, 1 \rangle_{\partial D} + (rp_h, 1)_D = (f, 1)_D \quad \forall D \in \mathcal{D}_h^{\text{int}},$$

noticing that  $\{\!\{ \nabla p_h \cdot \mathbf{n}_\sigma \}\!\} = \nabla p_h \cdot \mathbf{n}_\sigma$  for all  $\sigma \subset \partial D$  as discussed above. The assertion of the lemma now follows by the Green theorem.  $\square$

#### 4.2. Poincaré, Friedrichs, and trace inequalities-based auxiliary estimates

In order to define our estimators, we will need the Poincaré, Friedrichs, and trace inequalities, which we recall below. We then prove several important auxiliary estimates, designed to cope optimally with the reaction dominance.

Let  $D$  be a polygon or polyhedron. The Poincaré inequality states that

$$\|\varphi - \varphi_D\|_D^2 \leq C_{P,D} h_D^2 \|\nabla \varphi\|_D^2 \quad \forall \varphi \in \mathbf{H}^1(D), \tag{4.2}$$

where  $\varphi_D$  is the mean of  $\varphi$  over  $D$  given by  $\varphi_D := (\varphi, 1)_D / |D|$  and where the constant  $C_{P,D}$  can for each convex  $D$  be evaluated as  $1/\pi^2$ , cf. [3,15]. To evaluate  $C_{P,D}$  for nonconvex elements  $D$  is more complicated but it still can be done, cf. Eymard *et al.* [8], Lemma 10.2, or Carstensen and Funken [5], Section 2.

If  $\partial\Omega \cap \partial D \neq \emptyset$ , the Friedrichs inequality states that

$$\|\varphi\|_D^2 \leq C_{F,D,\partial\Omega} h_D^2 \|\nabla \varphi\|_D^2 \quad \forall \varphi \in \mathbf{H}^1(D) \text{ such that } \varphi = 0 \text{ on } \partial\Omega \cap \partial D. \tag{4.3}$$

As long as  $\partial\Omega$  is such that there exists a vector  $\mathbf{b} \in \mathbb{R}^d$  such that for almost all  $\mathbf{x} \in D$ , the first intersection of  $\mathcal{B}_\mathbf{x}$  and  $\partial D$  lies in  $\partial\Omega$ , where  $\mathcal{B}_\mathbf{x}$  is the straight semi-line defined by the origin  $\mathbf{x}$  and the vector  $\mathbf{b}$ ,  $C_{F,D,\partial\Omega} = 1$ , cf. [23], Remark 5.8. To evaluate  $C_{F,D,\partial\Omega}$  in the general case is more complicated but it still can be done, cf. [23], Remark 5.9, or Carstensen and Funken [5], Section 3.

Finally, for a simplex  $K$ , the trace inequality states that

$$\|\varphi\|_\sigma^2 \leq C_{t,K,\sigma} (h_K^{-1} \|\varphi\|_K^2 + \|\varphi\|_K \|\nabla \varphi\|_K) \quad \forall \varphi \in \mathbf{H}^1(K). \tag{4.4}$$

It follows from [19], Lemma 3.12, that the constant  $C_{t,K,\sigma}$  can be evaluated as  $|\sigma| h_K / |K|$ , see also Carstensen and Funken [5], Theorem 4.1 for  $d = 2$ .

**Lemma 4.2** (auxiliary estimates on simplices). *Let  $K \in \mathcal{S}_h$ ,  $\sigma \in \mathcal{E}_K$ ,  $\varphi \in H^1(K)$ , and  $\varphi_K := (\varphi, 1)_K/|K|$ . Then*

$$\|\varphi - \varphi_K\|_K \leq m_K \|\varphi\|_K \tag{4.5}$$

with

$$m_K := \min \left\{ C_{P,K}^{1/2} h_K, c_{r,K}^{-1/2} \right\}. \tag{4.6}$$

Moreover,

$$\|\varphi - \varphi_K\|_\sigma \leq C_{t,K,\sigma}^{1/2} \tilde{m}_K^{1/2} \|\varphi\|_K \tag{4.7}$$

with

$$\tilde{m}_K := \min \left\{ \left( C_{P,K} + C_{P,K}^{1/2} \right) h_K, c_{r,K}^{-1} h_K^{-1} + \frac{1}{2} c_{r,K}^{-1/2} \right\}. \tag{4.8}$$

*Proof.* We begin by the first assertion. As  $\varphi_K$  is the  $L^2$  projection of  $\varphi$  over the constants, we have

$$\|\varphi - \varphi_K\|_K \leq \|\varphi\|_K. \tag{4.9}$$

Now, using that

$$\|\varphi\|_K = \left\| \frac{r^{1/2}}{r^{1/2}} \varphi \right\|_K \leq c_{r,K}^{-1/2} \|\varphi\|_K, \tag{4.10}$$

we obtain  $\|\varphi - \varphi_K\|_K \leq c_{r,K}^{-1/2} \|\varphi\|_K$ . On the other hand, from the Poincaré inequality (4.2) and definition (2.3) of the energy norm, the estimate  $\|\varphi - \varphi_K\|_K \leq C_{P,K}^{1/2} h_K \|\varphi\|_K$  follows easily, whence we conclude (4.5).

In order to prove the second assertion, we use the trace inequality (4.4) for  $\varphi - \varphi_K$ . We have

$$\begin{aligned} \|\varphi - \varphi_K\|_\sigma^2 &\leq C_{t,K,\sigma} (h_K^{-1} \|\varphi - \varphi_K\|_K^2 + \|\varphi - \varphi_K\|_K \|\nabla(\varphi - \varphi_K)\|_K) \\ &\leq C_{t,K,\sigma} (C_{P,K} h_K \|\nabla\varphi\|_K^2 + C_{P,K}^{1/2} h_K \|\nabla\varphi\|_K^2) \\ &\leq C_{t,K,\sigma} \left( C_{P,K} + C_{P,K}^{1/2} \right) h_K \|\varphi\|_K^2, \end{aligned}$$

using that  $\nabla\varphi_K = 0$ , the Poincaré inequality (4.2) and definition (2.3) of the energy norm. Similarly,

$$\begin{aligned} \|\varphi - \varphi_K\|_\sigma^2 &\leq C_{t,K,\sigma} (h_K^{-1} \|\varphi\|_K^2 + \|\varphi\|_K \|\nabla\varphi\|_K) \\ &\leq C_{t,K,\sigma} \left( c_{r,K}^{-1} h_K^{-1} \|\varphi\|_K^2 + c_{r,K}^{-1/2} \|r^{1/2}\varphi\|_K \|\nabla\varphi\|_K \right) \\ &\leq C_{t,K,\sigma} \left( c_{r,K}^{-1} h_K^{-1} \|\varphi\|_K^2 + \frac{1}{2} c_{r,K}^{-1/2} \|\varphi\|_K^2 \right), \end{aligned}$$

using (4.9), (4.10), the inequality  $2ab \leq a^2 + b^2$ , and definition (2.3) of the energy norm. Hence (4.7) follows.  $\square$

**Lemma 4.3** (auxiliary estimates on dual volumes). *Let  $D \in \mathcal{D}_h$ ,  $\varphi \in H^1(D)$ , and  $\varphi_D := (\varphi, 1)_D/|D|$ . Then,*

$$\begin{aligned} \|\varphi - \varphi_D\|_D &\leq m_D \|\varphi\|_D, & D \in \mathcal{D}_h^{\text{int}}, \\ \|\varphi\|_D &\leq m_D \|\varphi\|_D, & D \in \mathcal{D}_h^{\text{ext}}, \end{aligned}$$

where

$$m_D := \min \left\{ C_{P,D}^{1/2} h_D, c_{r,D}^{-1/2} \right\}, \quad D \in \mathcal{D}_h^{\text{int}}, \tag{4.11}$$

$$m_D := \min \left\{ C_{F,D,\partial\Omega}^{1/2} h_D, c_{r,D}^{-1/2} \right\}, \quad D \in \mathcal{D}_h^{\text{ext}}, \tag{4.12}$$

with  $C_{P,D}$  the constant from the Poincaré inequality (4.2) and  $C_{F,D,\partial\Omega}$  that from the Friedrichs inequality (4.3).



*Proof.* The proof of the first statement is analogous to the proof of (4.5) in Lemma 4.2. To obtain the second statement, we use  $\|\varphi\|_D \leq c_{r,D}^{-1/2} \|\varphi\|_D$  (cf. (4.10)) and the Friedrichs inequality (4.3).  $\square$

### 4.3. Guaranteed *a posteriori* error estimates

We define and prove here our *a posteriori* error estimates in a rather general form motivated by the diffusive flux reconstruction of Section 4.1:

**Theorem 4.4** (guaranteed *a posteriori* error estimate). *Let  $p$  be the weak solution of problem (1.1a)–(1.1b) given by (2.4) and let  $p_h \in H_0^1(\Omega)$  such that  $\Delta p_h \in L^2(K)$  on each  $K \in \mathcal{S}_h$  be arbitrary. Let next  $\mathbf{t}_h \in \mathbf{H}(\text{div}, \Omega)$  be such that*

$$(\nabla \cdot \mathbf{t}_h + r p_h, 1)_D = (f, 1)_D \quad \forall D \in \mathcal{D}_h^{\text{int}}. \tag{4.13}$$

Define the residual estimator by

$$\eta_{R,D} := m_D \|f - \nabla \cdot \mathbf{t}_h - r p_h\|_D, \quad D \in \mathcal{D}_h, \tag{4.14}$$

where  $m_D$  is given by (4.11)–(4.12), and the diffusive flux estimator

$$\eta_{\text{DF},D} := \min \left\{ \eta_{\text{DF},D}^{(1)}, \eta_{\text{DF},D}^{(2)} \right\}, \quad D \in \mathcal{D}_h, \tag{4.15}$$

where

$$\eta_{\text{DF},D}^{(1)} := \|\nabla p_h + \mathbf{t}_h\|_D$$

and

$$\eta_{\text{DF},D}^{(2)} := \left\{ \sum_{K \in \mathcal{S}_D} \left( m_K \|\Delta p_h + \nabla \cdot \mathbf{t}_h - (\Delta p_h + \nabla \cdot \mathbf{t}_h)_K\|_K + \tilde{m}_K^{1/2} \sum_{\sigma \in \mathcal{E}_K} C_{\mathbf{t},K,\sigma}^{1/2} \|(\nabla p_h + \mathbf{t}_h) \cdot \mathbf{n}\|_\sigma \right)^2 \right\}^{1/2},$$

with  $m_K$  given by (4.6), and  $\tilde{m}_K$  and  $C_{\mathbf{t},K,\sigma}$  respectively by (4.8) and (4.4). Then

$$\| \|p - p_h\| \| \leq \left\{ \sum_{D \in \mathcal{D}_h} (\eta_{R,D} + \eta_{\text{DF},D})^2 \right\}^{1/2}. \tag{4.16}$$

*Proof.* Putting  $\mathbf{t} = \mathbf{t}_h$  in (3.2) we have (with  $\varphi$  defined in the proof of Thm. 3.1)

$$\| \|p - p_h\| \| = (f - \nabla \cdot \mathbf{t}_h - r p_h, \varphi) - (\nabla p_h + \mathbf{t}_h, \nabla \varphi).$$

Next, multiplying (4.13) by  $\varphi_D := (\varphi, 1)_D / |D|$ , we come to

$$(f - \nabla \cdot \mathbf{t}_h - r p_h, \varphi_D)_D = 0 \quad \forall D \in \mathcal{D}_h^{\text{int}}.$$

Thus

$$\begin{aligned} \| \|p - p_h\| \| &= \sum_{D \in \mathcal{D}_h^{\text{int}}} \{ (f - \nabla \cdot \mathbf{t}_h - r p_h, \varphi - \varphi_D)_D - (\nabla p_h + \mathbf{t}_h, \nabla \varphi)_D \} \\ &+ \sum_{D \in \mathcal{D}_h^{\text{ext}}} \{ (f - \nabla \cdot \mathbf{t}_h - r p_h, \varphi)_D - (\nabla p_h + \mathbf{t}_h, \nabla \varphi)_D \}. \end{aligned} \tag{4.17}$$

Using the Cauchy–Schwarz inequality and Lemma 4.3, we have for  $D \in \mathcal{D}_h^{\text{int}}$

$$\begin{aligned} (f - \nabla \cdot \mathbf{t}_h - r p_h, \varphi - \varphi_D)_D &\leq \|f - \nabla \cdot \mathbf{t}_h - r p_h\|_D \|\varphi - \varphi_D\|_D \\ &\leq m_D \|f - \nabla \cdot \mathbf{t}_h - r p_h\|_D \|\varphi\|_D = \eta_{R,D} \|\varphi\|_D \end{aligned} \tag{4.18}$$

and for  $D \in \mathcal{D}_h^{\text{ext}}$

$$\begin{aligned} (f - \nabla \cdot \mathbf{t}_h - rp_h, \varphi)_D &\leq \|f - \nabla \cdot \mathbf{t}_h - rp_h\|_D \|\varphi\|_D \\ &\leq m_D \|f - \nabla \cdot \mathbf{t}_h - rp_h\|_D \|\varphi\|_D = \eta_{R,D} \|\varphi\|_D. \end{aligned} \quad (4.19)$$

In order to estimate the terms  $-(\nabla p_h + \mathbf{t}_h, \nabla \varphi)_D$ , we can use Cauchy–Schwarz inequality and the definition (2.3) of the energy norm to obtain

$$-(\nabla p_h + \mathbf{t}_h, \nabla \varphi)_D \leq \|\nabla p_h + \mathbf{t}_h\|_D \|\nabla \varphi\|_D \leq \eta_{\text{DF},D}^{(1)} \|\varphi\|_D. \quad (4.20)$$

However, the estimate  $\|\nabla \varphi\|_D \leq \|\varphi\|_D$  is too poor if  $r \gg 1$  and an *a posteriori* error estimate featuring only  $\eta_{\text{DF},D}^{(1)}$  would not be robust (*cf.* Verfürth [22] for a recent similar observation). We fortunately notice that there is another way of estimating the terms  $-(\nabla p_h + \mathbf{t}_h, \nabla \varphi)_D$ . Using the fact that  $\nabla \varphi_K = 0$  for  $\varphi_K := (\varphi, 1)_K / |K|$  for all  $K \in \mathcal{S}_D$  and the Green theorem, we obtain

$$\begin{aligned} -(\nabla p_h + \mathbf{t}_h, \nabla \varphi)_D &= \sum_{K \in \mathcal{S}_D} -(\nabla p_h + \mathbf{t}_h, \nabla(\varphi - \varphi_K))_K \\ &= \sum_{K \in \mathcal{S}_D} \{-\langle (\nabla p_h + \mathbf{t}_h) \cdot \mathbf{n}, \varphi - \varphi_K \rangle_{\partial K} + (\Delta p_h + \nabla \cdot \mathbf{t}_h, \varphi - \varphi_K)_K\} \\ &= \sum_{K \in \mathcal{S}_D} \{-\langle (\nabla p_h + \mathbf{t}_h) \cdot \mathbf{n}, \varphi - \varphi_K \rangle_{\partial K} + (\Delta p_h + \nabla \cdot \mathbf{t}_h - (\Delta p_h + \nabla \cdot \mathbf{t}_h)_K, \varphi - \varphi_K)_K\}. \end{aligned} \quad (4.21)$$

Note that in the last equality, we could have subtracted the mean value of  $\Delta p_h + \nabla \cdot \mathbf{t}_h$  on  $K$  thanks to the term  $\varphi - \varphi_K$  in the second argument of the scalar product  $(\cdot, \cdot)_K$ . This turns out advantageous as

$$\|\Delta p_h + \nabla \cdot \mathbf{t}_h - (\Delta p_h + \nabla \cdot \mathbf{t}_h)_K\|_K \leq \|\Delta p_h + \nabla \cdot \mathbf{t}_h\|_K \quad (4.22)$$

by (4.9).

We now estimate the terms of the last sum separately. Using the Cauchy–Schwarz inequality and estimate (4.7) from Lemma 4.2, the first terms of (4.21) can be estimated as

$$\begin{aligned} -\langle (\nabla p_h + \mathbf{t}_h) \cdot \mathbf{n}, \varphi - \varphi_K \rangle_{\partial K} &\leq \sum_{\sigma \in \mathcal{E}_K} \|(\nabla p_h + \mathbf{t}_h) \cdot \mathbf{n}\|_{\sigma} \|\varphi - \varphi_K\|_{\sigma} \\ &\leq \sum_{\sigma \in \mathcal{E}_K} \|(\nabla p_h + \mathbf{t}_h) \cdot \mathbf{n}\|_{\sigma} C_{t,K,\sigma}^{1/2} \tilde{m}_K^{1/2} \|\varphi\|_K. \end{aligned} \quad (4.23)$$

For the second terms of (4.21), we use the Cauchy–Schwarz inequality and estimate (4.5) from Lemma 4.2 in order to obtain

$$\begin{aligned} (\Delta p_h + \nabla \cdot \mathbf{t}_h - (\Delta p_h + \nabla \cdot \mathbf{t}_h)_K, \varphi - \varphi_K)_K &\leq \|\Delta p_h + \nabla \cdot \mathbf{t}_h - (\Delta p_h + \nabla \cdot \mathbf{t}_h)_K\|_K \|\varphi - \varphi_K\|_K \\ &\leq \|\Delta p_h + \nabla \cdot \mathbf{t}_h - (\Delta p_h + \nabla \cdot \mathbf{t}_h)_K\|_K m_K \|\varphi\|_K. \end{aligned} \quad (4.24)$$

Putting inequalities (4.23) and (4.24) into (4.21), we obtain

$$\begin{aligned} -(\nabla p_h + \mathbf{t}_h, \nabla \varphi)_D &\leq \\ &\sum_{K \in \mathcal{S}_D} \left( \tilde{m}_K^{1/2} \sum_{\sigma \in \mathcal{E}_K} C_{t,K,\sigma}^{1/2} \|(\nabla p_h + \mathbf{t}_h) \cdot \mathbf{n}\|_{\sigma} + m_K \|\Delta p_h + \nabla \cdot \mathbf{t}_h - (\Delta p_h + \nabla \cdot \mathbf{t}_h)_K\|_K \right) \|\varphi\|_K \\ &\leq \eta_{\text{DF},D}^{(2)} \|\varphi\|_D, \end{aligned} \quad (4.25)$$

employing finally the Cauchy–Schwarz inequality.

Now, using estimates (4.20) and (4.25), we have that

$$-(\nabla p_h + \mathbf{t}_h, \nabla \varphi)_D \leq \eta_{\text{DF},D} \|\varphi\|_D. \tag{4.26}$$

Hence, (4.17) with (4.18), (4.19), and (4.26), the Cauchy–Schwarz inequality, and the fact that  $\|\varphi\| = 1$  yield

$$\|p - p_h\| \leq \sum_{D \in \mathcal{D}_h} (\eta_{\text{R},D} + \eta_{\text{DF},D}) \|\varphi\|_D \leq \left\{ \sum_{D \in \mathcal{D}_h} (\eta_{\text{R},D} + \eta_{\text{DF},D})^2 \right\}^{1/2}. \quad \square$$

**Remark 4.5** (the estimate for the vertex-centered finite volume method (2.5)). By Lemma 4.1,  $\mathbf{t}_h \in \mathbf{RTN}(\mathcal{S}_h)$  given by (4.1) for the vertex-centered finite volume method (2.5) satisfies (4.13), whence it can directly be used in Theorem 4.4. Moreover, as  $p_h$  is piecewise linear on  $\mathcal{T}_h$  (and thus also on  $\mathcal{S}_h$ ),  $\Delta p_h = 0$  on all  $K \in \mathcal{S}_h$ . Additionally, as  $\mathbf{t}_h \in \mathbf{RTN}(\mathcal{S}_h)$ ,  $\nabla \cdot \mathbf{t}_h$  is piecewise constant on  $(\mathcal{S}_h)$ , whence  $\|\Delta p_h + \nabla \cdot \mathbf{t}_h - (\Delta p_h + \nabla \cdot \mathbf{t}_h)_K\|_K = 0$ . Thus

$$\eta_{\text{DF},D}^{(2)} = \left\{ \sum_{K \in \mathcal{S}_D} \left( \tilde{m}_K^{1/2} \sum_{\sigma \in \mathcal{E}_K} C_{\mathbf{t},K,\sigma}^{1/2} \|(\nabla p_h + \mathbf{t}_h) \cdot \mathbf{n}\|_\sigma \right)^2 \right\}^{1/2}$$

in this case.

**Remark 4.6** (extensions to other conforming methods). Using the general form of Theorem 4.4, extension of our estimates to other methods yielding a conforming approximation  $p_h$  consists only in finding an appropriate  $\mathbf{t}_h \in \mathbf{H}(\text{div}, \Omega)$  satisfying (4.13). For the pure diffusion case, we refer in this respect to [25].

### 5. LOCAL EFFICIENCY AND ROBUSTNESS OF THE *A POSTERIORI* ERROR ESTIMATES

We prove in this section the local efficiency of the *a posteriori* error estimators of Theorem 4.4 for the case where  $\mathbf{t}_h \in \mathbf{RTN}(\mathcal{S}_h)$  is given by (4.1), which is according to Remark 4.5 in particular possible in the vertex-centered finite volume method (2.5). The key feature is the *robustness*, with respect to reaction dominance and also with respect to the spatial variation of  $r$  under the condition that  $r$  is piecewise constant on  $\mathcal{D}_h$ . We actually show that the estimators of Theorem 4.4 represent, up to a generic constant, local lower bounds for those of Verfürth [21].

**Theorem 5.1** (local efficiency and robustness of the *a posteriori* error estimate). *Let the functions  $f$  and  $r$  be piecewise polynomials of degree  $m$  on  $\mathcal{S}_h$ , let  $p$  be the weak solution of problem (1.1a)–(1.1b) given by (2.4), let  $p_h \in X_h^0$  be arbitrary, and let  $\mathbf{t}_h \in \mathbf{RTN}(\mathcal{S}_h)$  be given by (4.1). Let next  $\mathcal{T}_h$  be shape-regular, i.e., let  $\min_{K \in \mathcal{T}_h} |K|/h_K^d \geq \kappa_{\mathcal{T}}$  for some positive constant  $\kappa_{\mathcal{T}}$ . Let finally the *a posteriori* error estimators  $\eta_{\text{R},D}$  and  $\eta_{\text{DF},D}$  be respectively given by (4.14) and (4.15). Then, for each  $D \in \mathcal{D}_h$ , there holds*

$$\eta_{\text{DF},D} + \eta_{\text{R},D} \leq C \|p - p_h\|_D, \tag{5.1}$$

where the constant  $C$  depends only on the space dimension  $d$ , on the shape regularity parameter  $\kappa_{\mathcal{T}}$ , on the polynomial degree  $m$  of  $f$  and  $r$ , on the constants  $C_{\text{P},D}$  if  $D \in \mathcal{D}_h^{\text{int}}$ ,  $C_{\text{F},D,\partial\Omega}$  if  $D \in \mathcal{D}_h^{\text{ext}}$ , and  $\max_{K \in \mathcal{S}_D} \max_{\sigma \in \mathcal{E}_K \cap \mathcal{G}_D^{\text{int}}} \{C_{\mathbf{t},K,\sigma}\}$ , and finally on the local variation of  $r$  in  $D$  through the ratio  $C_{r,D}/c_{r,D}$ .

*Proof.* Let  $D \in \mathcal{D}_h$  be fixed. We first note that as  $-\nabla p_h \cdot \mathbf{n}_\sigma = \mathbf{t}_h \cdot \mathbf{n}_\sigma$  for all  $\sigma \subset \partial D$  by (4.1) and by the definition of the average operator, we may change the summation over  $\sigma \in \mathcal{E}_K$  to the summation over  $\sigma \in \mathcal{E}_K \cap \mathcal{G}_D^{\text{int}}$  in the definition of  $\eta_{\text{DF},D}^{(2)}$ . Then using the definition of the residual and diffusive flux estimators,

the estimate (4.22), and the triangle inequality, we have

$$\begin{aligned} \eta_{DF,D} + \eta_{R,D} &= \min \left\{ \eta_{DF,D}^{(1)}, \eta_{DF,D}^{(2)} \right\} + \eta_{R,D} \leq \eta_{DF,D}^{(2)} + \eta_{R,D} \\ &\leq \left\{ \sum_{K \in S_D} \left( m_K \|\Delta p_h + \nabla \cdot \mathbf{t}_h\|_K + \tilde{m}_K^{1/2} \sum_{\sigma \in \mathcal{E}_K \cap \mathcal{G}_D^{\text{int}}} C_{t,K,\sigma}^{1/2} \|(\nabla p_h + \mathbf{t}_h) \cdot \mathbf{n}\|_\sigma \right)^2 \right\}^{1/2} \\ &\quad + m_D \|f + \Delta p_h - r p_h\|_D + m_D \|\Delta p_h + \nabla \cdot \mathbf{t}_h\|_D. \end{aligned}$$

So, squaring the above estimate and applying the Cauchy–Schwarz inequality, we obtain

$$\begin{aligned} C_1^{-1}(\eta_{DF,D} + \eta_{R,D})^2 &\leq \sum_{K \in S_D} m_K^2 \|\Delta p_h + \nabla \cdot \mathbf{t}_h\|_K^2 + \sum_{K \in S_D} \tilde{m}_K \sum_{\sigma \in \mathcal{E}_K \cap \mathcal{G}_D^{\text{int}}} C_{t,K,\sigma} \|(\nabla p_h + \mathbf{t}_h) \cdot \mathbf{n}\|_\sigma^2 \\ &\quad + m_D^2 \|f + \Delta p_h - r p_h\|_D^2 + m_D^2 \|\Delta p_h + \nabla \cdot \mathbf{t}_h\|_D^2 \end{aligned}$$

for some constant  $C_1$  depending only on  $d$  and  $\kappa_{\mathcal{T}}$ .

Noticing that  $m_D^2 \leq C_2 m_K^2$  for all  $K \in S_D$ , with a constant  $C_2$  which depends only on  $C_{P,D}$  if  $D \in \mathcal{D}_h^{\text{int}}$ ,  $C_{F,D,\partial\Omega}$  if  $D \in \mathcal{D}_h^{\text{ext}}$ ,  $\kappa_{\mathcal{T}}$ , and  $C_{r,D}/c_{r,D}$ , we have from the last inequality

$$\begin{aligned} (\eta_{DF,D} + \eta_{R,D})^2 &\leq C_1(1 + C_2) \sum_{K \in S_D} m_K^2 \|\Delta p_h + \nabla \cdot \mathbf{t}_h\|_K^2 \\ &\quad + C_1 \sum_{K \in S_D} \tilde{m}_K \sum_{\sigma \in \mathcal{E}_K \cap \mathcal{G}_D^{\text{int}}} C_{t,K,\sigma} \|(\nabla p_h + \mathbf{t}_h) \cdot \mathbf{n}\|_\sigma^2 \\ &\quad + C_1 C_2 \sum_{K \in S_D} m_K^2 \|f + \Delta p_h - r p_h\|_K^2. \end{aligned}$$

Recall now that for a simplex  $K$  and  $\mathbf{v} \in \mathbf{RTN}(K)$ , we have the inverse inequality  $\|\nabla \cdot \mathbf{v}\|_K^2 \leq C_3 h_K^{-2} \|\mathbf{v}\|_K^2$ , with  $C_3$  depending only on  $d$  and  $\kappa_{\mathcal{T}}$ , and the estimate

$$\|\mathbf{v}\|_K^2 \leq C_4 h_K \sum_{\sigma \in \mathcal{E}_K} \|\mathbf{v} \cdot \mathbf{n}\|_\sigma^2,$$

with  $C_4$  again depending only on  $d$  and  $\kappa_{\mathcal{T}}$ . Thus, as  $\nabla p_h + \mathbf{t}_h \in \mathbf{RTN}(K)$ ,

$$\|\Delta p_h + \nabla \cdot \mathbf{t}_h\|_K^2 \leq C_3 h_K^{-2} \|\nabla p_h + \mathbf{t}_h\|_K^2 \leq C_3 C_4 h_K^{-1} \sum_{\sigma \in \mathcal{E}_K \cap \mathcal{G}_D^{\text{int}}} \|(\nabla p_h + \mathbf{t}_h) \cdot \mathbf{n}\|_\sigma^2,$$

using also again the fact that  $-\nabla p_h \cdot \mathbf{n}_\sigma = \mathbf{t}_h \cdot \mathbf{n}_\sigma$  for all  $\sigma \subset \partial D$ . Hence, putting  $C_{t,K} := \max_{\sigma \in \mathcal{E}_K \cap \mathcal{G}_D^{\text{int}}} \{C_{t,K,\sigma}\}$ , we have the estimate

$$\begin{aligned} (\eta_{DF,D} + \eta_{R,D})^2 &\leq C_1 \sum_{K \in S_D} \left( ((1 + C_2) C_3 C_4 m_K^2 h_K^{-1} + C_{t,K} \tilde{m}_K) \sum_{\sigma \in \mathcal{E}_K \cap \mathcal{G}_D^{\text{int}}} \|(\nabla p_h + \mathbf{t}_h) \cdot \mathbf{n}\|_\sigma^2 \right) \\ &\quad + C_1 C_2 \sum_{K \in S_D} m_K^2 \|f + \Delta p_h - r p_h\|_K^2. \end{aligned}$$

Let us now recall that by definition (4.1) of  $\mathbf{t}_h$ , we have

$$(\nabla p_h + \mathbf{t}_h)|_K \cdot \mathbf{n}_\sigma = (\nabla p_h \cdot \mathbf{n}_\sigma)|_K - \{ \nabla p_h \cdot \mathbf{n}_\sigma \} = \frac{1}{2} \mathbf{n}_\sigma \cdot \mathbf{n} [ \nabla p_h \cdot \mathbf{n}_\sigma ]$$

if  $\sigma \in \mathcal{E}_K \cap \mathcal{G}_D^{\text{int}}$ , where  $\mathbf{n}_\sigma \cdot \mathbf{n} = \pm 1$  is used for sign alternation. Thus, we infer, for a constant  $C_5$  only depending on the constants  $C_1$ - $C_4$ ,  $\max_{K \in \mathcal{S}_D} C_{t,K}$ ,  $d$ , and  $\kappa_{\mathcal{T}}$ ,

$$(\eta_{\text{DF},D} + \eta_{\text{R},D})^2 \leq C_5 \sum_{K \in \mathcal{S}_D} \left( m_K^2 \|f + \Delta p_h - r p_h\|_K^2 + (m_K^2 h_K^{-1} + \tilde{m}_K) \sum_{\sigma \in \mathcal{E}_K \cap \mathcal{G}_D^{\text{int}}} \|[\nabla p_h \cdot \mathbf{n}]\|_\sigma^2 \right).$$

We now show that  $m_K^2 h_K^{-1} + \tilde{m}_K \leq C_6 m_K$  with some constant  $C_6$  only dependent on  $C_{\text{P},K}$  (recall that  $C_{\text{P},K} = 1/\pi^2$  as simplices are convex). Firstly,  $m_K^2 h_K^{-1} \leq C_{\text{P},K}^{1/2} m_K$  is obvious noticing that this statement is equivalent to  $m_K \leq C_{\text{P},K}^{1/2} h_K$ , which follows from the definition (4.6) of  $m_K$ . Secondly, employing also this bound, we have

$$\begin{aligned} \tilde{m}_K &\leq \min \left\{ (C_{\text{P},K} + C_{\text{P},K}^{1/2}) h_K, c_{r,K}^{-1} h_K^{-1} \right\} + \min \left\{ (C_{\text{P},K} + C_{\text{P},K}^{1/2}) h_K, \frac{1}{2} c_{r,K}^{-1/2} \right\} \\ &\leq (1 + C_{\text{P},K}^{-1/2}) \min \left\{ C_{\text{P},K} h_K, c_{r,K}^{-1} h_K^{-1} \right\} + (1 + C_{\text{P},K}^{1/2}) \min \left\{ C_{\text{P},K}^{1/2} h_K, c_{r,K}^{-1/2} \right\} \\ &= (1 + C_{\text{P},K}^{-1/2}) m_K^2 h_K^{-1} + (1 + C_{\text{P},K}^{1/2}) m_K \\ &\leq 2 (1 + C_{\text{P},K}^{1/2}) m_K, \end{aligned}$$

whence the assertion follows. Combining the previous bounds, we thus have

$$(\eta_{\text{DF},D} + \eta_{\text{R},D})^2 \leq C_7 \sum_{K \in \mathcal{S}_D} \left( m_K^2 \|f + \Delta p_h - r p_h\|_K^2 + m_K \sum_{\sigma \in \mathcal{E}_K \cap \mathcal{G}_D^{\text{int}}} \|[\nabla p_h \cdot \mathbf{n}]\|_\sigma^2 \right),$$

for a constant  $C_7$  depending only on  $C_5$  and  $C_6$ . We now finally note from this estimate that our estimators represent, up to the constant  $C_7$ , a local lower bound for the residual *a posteriori* error estimators of Verfürth [21], Proposition 4.1 (for the case of  $r$  constant and on the mesh  $\mathcal{S}_h$  instead of the mesh  $\mathcal{T}_h$ ). Hence, in order to show their fully robust local efficiency, it is sufficient to use the results of this reference. In particular, applying the bubble function estimates (4.13) and (4.16) from this reference to a simplex  $K \in \mathcal{S}_D$  and its side  $\sigma \in \mathcal{G}_D^{\text{int}}$  for  $r$  constant and  $f$  piecewise linear, we get

$$\begin{aligned} m_K \|f + \Delta p_h - r p_h\|_K &\leq C \|p - p_h\|_K, \\ m_K^{1/2} \|[\nabla p_h \cdot \mathbf{n}]\|_\sigma &\leq C \|p - p_h\|_{\mathcal{S}_\sigma} \end{aligned}$$

(recall that  $\mathcal{S}_\sigma$  are the two simplices sharing  $\sigma \in \mathcal{G}_D^{\text{int}}$ ), whence (5.1) follows. Finally, one can extend this result to general piecewise polynomial  $f$  and  $r$ , which gives the final dependencies of the constant  $C$  of (5.1) indicated in the announcement of the theorem.  $\square$

### 6. NUMERICAL EXPERIMENTS

We present in this section a series of numerical experiments for the vertex-centered finite volume method (2.5) which confirm the theoretical results of the paper. The *a posteriori* error estimate of Theorem 4.4 with the reconstructed diffusive flux  $\mathbf{t}_h$  given by (4.1) gives a guaranteed upper bound on the overall energy error but the effectivity index (recall that this is the ratio of the estimated to the actual error) is never close to the optimal value of one in our tests. For this reason, we also present results employing a local minimization procedure, consisting in modifications of the flux  $\mathbf{t}_h$  in the interior of each  $D \in \mathcal{D}_h$ . This procedure is in detail described in Appendix below.

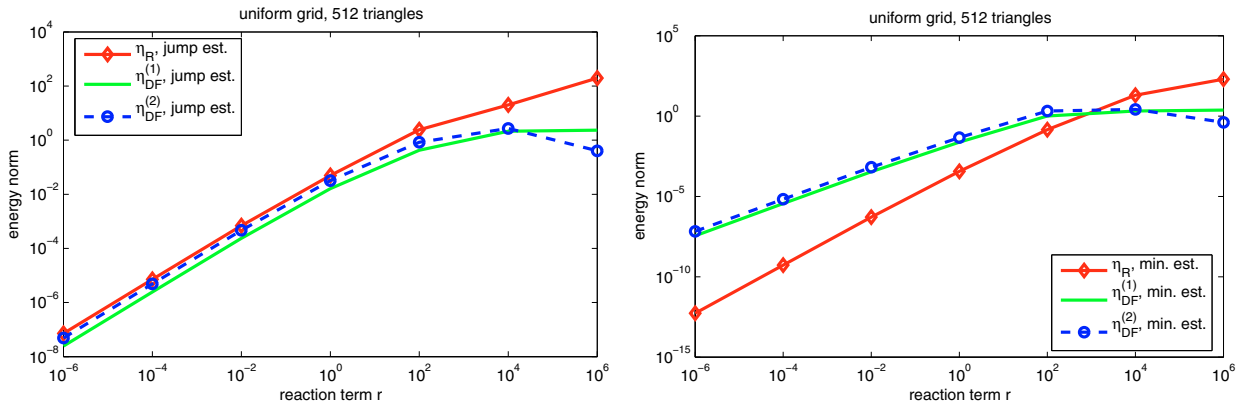


FIGURE 2. Comparison of the different estimators for the original jump estimate (4.16) with  $\mathbf{t}_h$  given by (4.1) (left) and for the minimization estimate (C.1) (right) in dependence on  $r$ .

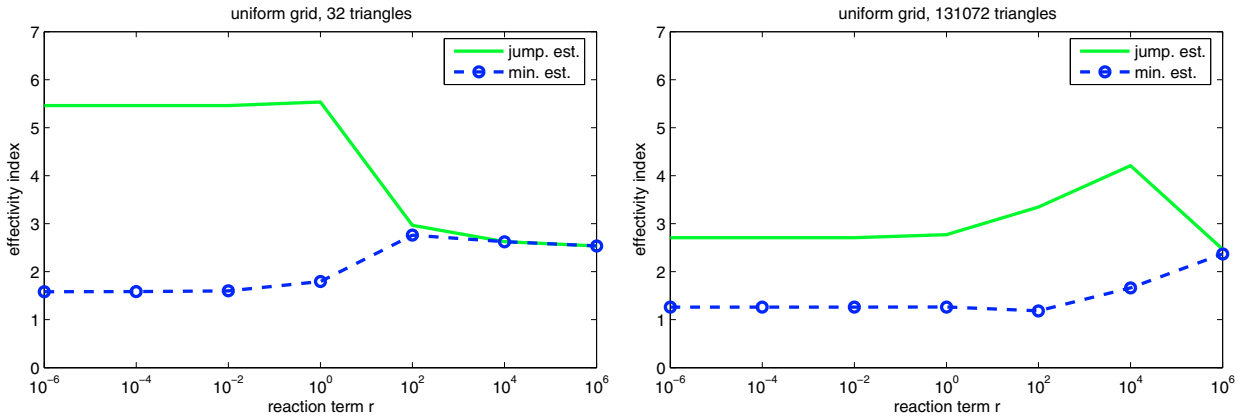


FIGURE 3. Effectivity indices for the original jump estimate (4.16) with  $\mathbf{t}_h$  given by (4.1) and for the minimization estimate (C.1) in dependence on  $r$  for two different (uniformly refined) meshes.

We perform our numerical experiments for problem (1.1a) with  $\Omega = (0, 1) \times (0, 1)$ , a constant reaction coefficient  $r$ , and  $f = 0$ . We prescribe the Dirichlet boundary condition by the exact solution

$$p(x, y) = e^{-r^{1/2}x} + e^{-r^{1/2}y},$$

as in [9]. This solution exhibits a boundary layer along the coordinate axes for high values of  $r$ . In order to carry out the tests, we have implemented our estimates into the FreeFem++ [10] package and all the results presented have been computed using FreeFem++. Finally, we shall in this section term estimate (4.16) of Theorem 4.4 with  $\mathbf{t}_h$  given by (4.1) as the *jump estimate*, as this reconstructed diffusive flux  $\mathbf{t}_h$  leads to estimators of the form  $\|(\nabla p_h + \mathbf{t}_h) \cdot \mathbf{n}\|_\sigma = \|\nabla p_h \cdot \mathbf{n}\|_\sigma / 2$ , and estimate (C.1) following from the local minimization strategy described in Appendix C below as the *minimization estimate*. We, however, note that in the majority of the cases, it is the simple choice (B.1) of Appendix B below which gives the minimum in (C.1), so that very similar results may be presented with (B.1) instead of (C.1).

We first in the left part of Figure 2 show the different estimators of the original jump estimate (4.16) with  $\mathbf{t}_h$  given by (4.1) on a fixed uniformly refined mesh with 512 elements in dependence on the reaction

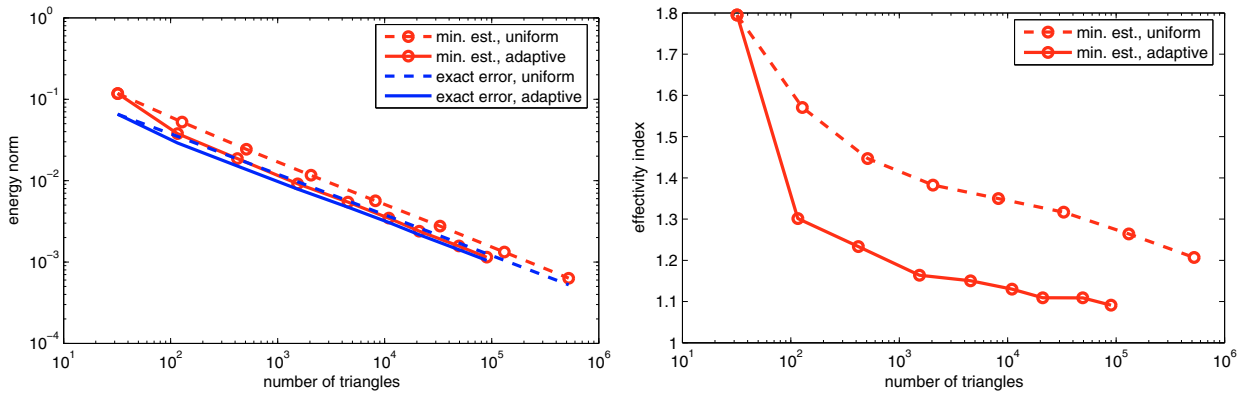


FIGURE 4. Estimated and actual error against the number of elements in uniformly/adaptively refined meshes (left) and corresponding effectivity indices (right) of the minimization estimator (C.1),  $r = 1$ .

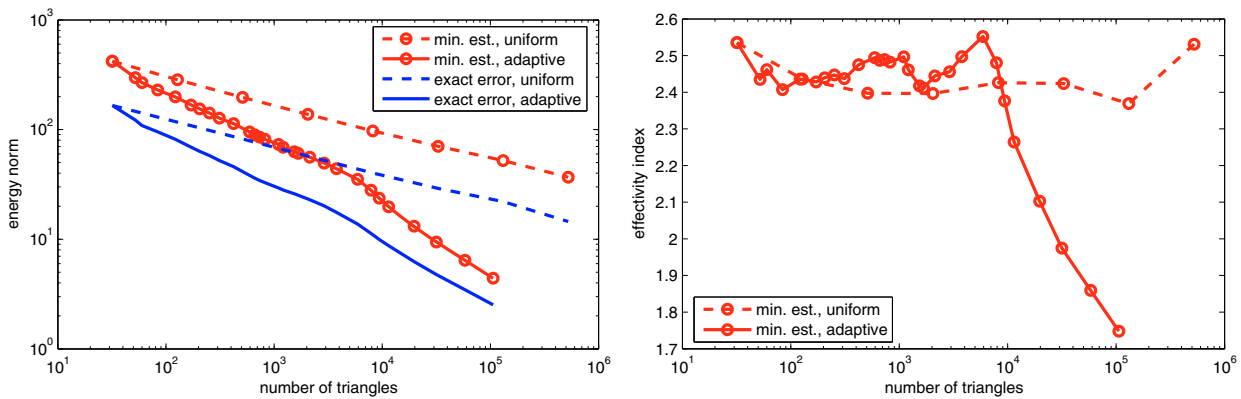


FIGURE 5. Estimated and actual error against the number of elements in uniformly/adaptively refined meshes (left) and corresponding effectivity indices (right) of the minimization estimator (C.1),  $r = 10^6$ .

coefficient  $r$ , which we let vary between  $10^{-6}$  and  $10^6$ . We remark that the highest contribution is always given by the residual estimate  $\eta_R := \{\sum_{D \in \mathcal{D}_h} \eta_{R,D}^2\}^{\frac{1}{2}}$ , whereas the contributions of the diffusive flux estimates  $\eta_{DF}^{(i)} := \{\sum_{D \in \mathcal{D}_h} (\eta_{DF,D}^{(i)})^2\}^{\frac{1}{2}}$  are smaller. Note also that although the estimate  $\eta_{DF}^{(1)}$  gives smaller values for moderate values of  $r$ , it gets eventually outperformed by the estimate  $\eta_{DF}^{(2)}$ . We next in Figure 3 present, for two different (uniformly refined) grids, the corresponding effectivity indices. We can clearly see that they are bounded uniformly with respect to  $r$  which demonstrates the full robustness of our estimates. Unfortunately, in particular for smaller values of  $r$ , they are not too close to the optimal value of 1. This is the reason for the introduction of a local minimization procedure which we have devised in [6] and [25], Section 7 in the pure diffusion case and which we adapt to the present case in Appendix below. The results using the minimization estimate (C.1) are then presented in the right part of Figure 2 and in both parts of Figure 3. We can see that for moderate values of  $r$ , the residual estimate has been decreased under the diffusive flux ones and consequently the effectivity index gets close to the optimal value of 1. In what follows, we present the results only for the minimization estimate (C.1).

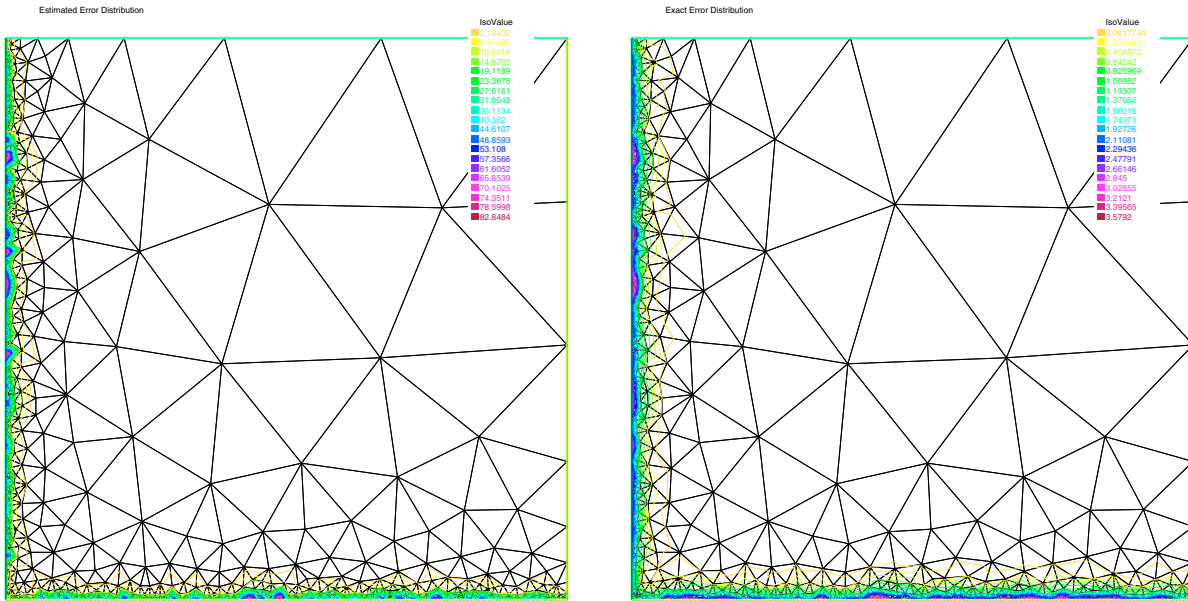


FIGURE 6. Estimated error (left) and exact error (right) distribution using the original jump estimate (4.16) with  $\mathbf{t}_h$  given by (4.1) on an adaptively refined mesh for  $r = 10^6$ .

Apart from overall error control, *a posteriori* error estimates are a key element for adaptive mesh refinement. We exploit for this purpose the capabilities of FreeFem++. We mark an element for refinement if the estimator exceeded 25% of the maximal element estimators but we recall that FreeFem++ actually generates a completely new mesh on the basis of this criterion and this new mesh is thus not a simple refinement of the previous one. In the adaptive refinement case, the elements marked for refinement were selected using the original jump estimators (4.16) with  $\mathbf{t}_h$  given by (4.1). This approach seems to give better numerical results (better error decreasing with the number of elements) and is in coincidence with our theoretical results, since we prove the local efficiency for these original estimators in Theorem 5.1. We firstly plot, in the left parts of Figures 4 and 5, respectively, the estimated and actual errors against the number of elements in both uniformly and adaptively refined meshes for  $r = 1$  and  $r = 10^6$ . In the first case, the solution poses no singularity, so the adaptive approach only leads to a slight improvement of the error attained for a given number of unknowns. In the second case with a singular solution, the adaptive approach leads to an important improvement of the error attained for a given number of unknowns. The effectivity indices are then shown in the right parts of Figures 4 and 5, respectively. In the first case, they improve considerably with the mesh refinement and especially in the adaptive refinement mode they get very close to the optimal value of 1, whereas in the second one they vary between 2.6 and 1.7. Finally, to further promote the usability of our estimates for adaptive mesh refinement, we present in Figure 6 the very well matching predicted and actual error distribution and the corresponding adaptively refined mesh as given by the jump estimator for  $r = 10^6$ .

### APPENDIX: IMPROVEMENTS BY LOCAL MINIMIZATION

In Sections 4 and 5, we have shown that a choice of  $\mathbf{t}_h \in \mathbf{H}(\text{div}, \Omega)$  in Theorem 4.4 for the vertex-centered finite volume method (2.5) leading to a guaranteed upper bound, local efficiency, and robustness is given by (4.1). However, it is not apparent at all whether this choice leads to the best upper bound. In particular, by closer investigation, it turns out that whereas in mixed finite element, finite volume, or discontinuous Galerkin methods [7,24,26], the residual estimator represents a higher-order term, as in these methods one has (with an



appropriate  $\mathbf{t}_h$ )  $(\nabla \cdot \mathbf{t}_h + rp_h, 1)_K = (f, 1)_K$  for all  $K \in \mathcal{T}_h$ , it is not the case here, as (4.13) is only true on a set of elements  $\mathcal{S}_D$  of each interior dual volume  $D$  and not on each element  $K \in \mathcal{S}_D$ . The numerical experiments for  $\mathbf{t}_h$  given by (4.1) of Section 6 indeed show that the residual estimators  $\eta_{R,D}$  represent a major contribution to the estimate.

A natural idea in order to decrease the estimate is to try to choose a different  $\tilde{\mathbf{t}}_h \in \mathbf{H}(\text{div}, \Omega)$  satisfying (4.13). Notice now that  $\tilde{\mathbf{t}}_h \in \mathbf{RTN}(\mathcal{S}_h)$  given by (4.1) only for such  $\sigma \in \mathcal{G}_h$  that lie in some interior side of  $\mathcal{D}_h$  satisfies (4.13) and we can choose any value of the normal component for the other sides (in the interior of each  $D \in \mathcal{D}_h$  and on the boundary). In particular, we can choose values that minimize the estimate. Moreover, as the estimator is built locally on each dual volume, we can perform this optimization process locally on each dual volume.

We describe in this appendix two ways of a local minimization. In the pure diffusion case, the first one was devised in [6] and consists in true local minimization for the given degrees of freedom, leading to a small linear system solution for each vertex. The second, simplified one, was proposed in [25], Section 7 and avoids any local linear system solution. We adapt them here to the reaction–diffusion case; our exposition will be given in two space dimensions but a similar development can be done in three space dimensions. For the sake of simplicity, we assume that  $f$  and  $r$  are piecewise constant on  $\mathcal{T}_h$ .

Once a local minimization has been performed, we have at our disposal two vector fields from the space  $\mathbf{RTN}(\mathcal{S}_h)$  satisfying (4.13):  $\mathbf{t}_h$  given by (4.1) and  $\tilde{\mathbf{t}}_h$  resulting from the local minimization. Thus local estimators on each  $D \in \mathcal{D}_h$  can be given as  $\eta_D^{\min} = \min \{ \eta_D(\mathbf{t}_h), \eta_D(\tilde{\mathbf{t}}_h) \}$ . Now recall that the normal components of  $\mathbf{t}_h$  and  $\tilde{\mathbf{t}}_h$  on the interior sides of  $\mathcal{D}_h$  coincide. Thus  $\bar{\mathbf{t}}_h \in \mathbf{RTN}(\mathcal{S}_h)$  can be formed (for explication only, not in practice) by choosing locally on each  $D \in \mathcal{D}_h$  either  $\mathbf{t}_h$  or  $\tilde{\mathbf{t}}_h$ , according to for which of these fluxes the local minimum has been attained. Then  $\eta_D^{\min}$  corresponds to  $\eta_D(\bar{\mathbf{t}}_h)$ . By such a construction: (a) the upper bound (Thm. 4.4) holds true, as  $\bar{\mathbf{t}}_h$  satisfies (4.13); (b) one can only improve the original estimators of Theorem 4.4 given by  $\eta_D(\mathbf{t}_h)$  alone; (c) the lower bound (Thm. 5.1) holds true as well, as the estimator  $\eta_D^{\min}$  as a local minimum is necessarily smaller than  $\eta_D(\mathbf{t}_h)$ , for which Theorem 5.1 holds.

### A. A FULL LOCAL MINIMIZATION STRATEGY

We outline here the generalization of the “full minimization strategy” of [6] to the reaction–diffusion case.

#### A.1. Notation and previous results

Let  $D \in \mathcal{D}_h$  be the dual volume corresponding to a vertex  $V_D$  as in Figure 7;  $D$  is decomposed into a subdivision  $\mathcal{S}_D$  of  $n$  subtriangles  $K_0, \dots, K_{n-1}$ , numbered in the counter-clockwise direction. On each subtriangle  $K_i$ , the vertex 0 is the center of the volume  $D$ , the other vertices are numbered in the counter-clockwise direction, and we call  $\sigma_j^i$  the edge opposite to the vertex  $j$  and  $\mathbf{n}_{\sigma_j^i}$  the exterior normal vector of the edge  $\sigma_j^i$ . Let next  $\psi_j^i, j = 0, 1, 2$ , be the basis function of  $\mathbf{RTN}(K_i)$  corresponding to the vertex  $j$ , *i.e.*,  $\psi_j^i = \frac{1}{d|K_i|}(\mathbf{x} - V_j^i)$ , where  $V_j^i$  is vertex  $j$  of the triangle  $K_i$ . On  $K_i$ ,  $\mathbf{t}_h$  can consequently be written as  $\mathbf{t}_h|_{K_i} = \alpha_0^i \psi_0^i + \alpha_1^i \psi_1^i + \alpha_2^i \psi_2^i$ .

The values of the external fluxes over  $\partial D$  are prescribed by (4.1) in the same way as before: for any dual volume  $D \in \mathcal{D}_h$ ,  $\alpha_0^i = -|\sigma_0^i| \nabla p_h \cdot \mathbf{n}_{\sigma_0^i}, i = 0, \dots, n - 1$ ; if  $D \in \mathcal{D}_h^{\text{ext}}$ , then in addition  $\alpha_2^0 = -|\sigma_2^0| \nabla p_h \cdot \mathbf{n}_{\sigma_2^0}$  and  $\alpha_1^{n-1} = -|\sigma_1^{n-1}| \nabla p_h \cdot \mathbf{n}_{\sigma_1^{n-1}}$ . The internal fluxes, given by the coefficients  $\alpha_1^i$  and  $\alpha_2^i$ , have to first fulfill the continuity of the normal trace across the edges, which imposes

- if  $D \in \mathcal{D}_h^{\text{int}}$ ,

$$\alpha_1^i + \alpha_2^{i+1} = 0, \quad i = 0, \dots, n - 1 \quad \text{with } \alpha_2^n = \alpha_2^0; \tag{A.1}$$

- if  $D \in \mathcal{D}_h^{\text{ext}}$ ,

$$\alpha_1^i + \alpha_2^{i+1} = 0, \quad i = 0, \dots, n - 2. \tag{A.2}$$

Therefore, there are  $n$  degrees of freedom  $\mathbf{X} = (\alpha^0, \dots, \alpha^{n-1})^t$  if  $D \in \mathcal{D}_h^{\text{int}}$  and  $n - 1$  degrees of freedom  $\mathbf{X} = (\alpha^0, \dots, \alpha^{n-2})^t$  if  $D \in \mathcal{D}_h^{\text{ext}}$  left and these can be chosen in order to minimize the estimator; from now on,

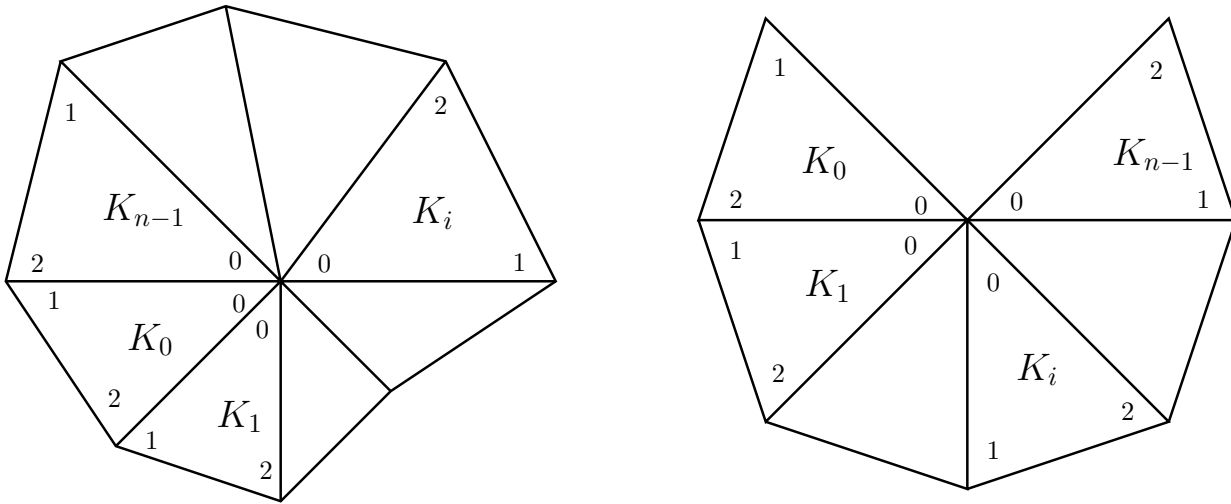


FIGURE 7. Dual volume and its subdivision  $\mathcal{S}_D$ . Left: interior dual volume; right: boundary dual volume.

the local estimator  $\eta_D(\mathbf{X}) = \eta_{DF,D}(\mathbf{X}) + \eta_{R,D}(\mathbf{X})$  will be considered as a function of them. Later on, we will also employ the notation  $\eta_D(\mathbf{t}_h) = \eta_{DF,D}(\mathbf{t}_h) + \eta_{R,D}(\mathbf{t}_h)$ .

It has been in particular shown in [6], Section 3, that the square of the first diffusive flux estimator  $\eta_{DF,D}^{(1)}$  on a dual volume  $D \in \mathcal{D}_h$  is a quadratic form with respect to  $\mathbf{X}$  of the form

$$\left(\eta_{DF,D}^{(1)}\right)^2(\mathbf{X}) = a_{DF}^{(1)} - \left(\mathbf{B}_{DF}^{(1)}\right)^t \mathbf{X} + \frac{1}{2} \mathbf{X}^t \mathbf{A}_{DF}^{(1)} \mathbf{X}; \tag{A.3}$$

we refer to this reference for the precise form of the entries. Similarly, by a slight modification of the approach of this reference, one can derive that

$$\eta_{R,D}^2(\mathbf{X}) = a_R - \mathbf{B}_R^t \mathbf{X} + \frac{1}{2} \mathbf{X}^t \mathbf{A}_R \mathbf{X}. \tag{A.4}$$

We now accomplish a similar task for the diffusive flux estimator  $\eta_{DF,D}^{(2)}$ .

### A.2. Diffusive flux estimator $\eta_{DF,D}^{(2)}$

By the definition, the square of the second diffusive flux estimator  $\eta_{DF,D}^{(2)}$  on a dual volume  $D \in \mathcal{D}_h$  is not a quadratic form with respect to the degrees of freedom  $\mathbf{X}$  as the other ones. As our purpose is to improve the estimator without increasing too much the computational cost, we choose not to minimize  $\left(\eta_{DF,D}^{(2)}\right)^2$  directly, but an upper bound instead: we have

$$\begin{aligned} \left(\eta_{DF,D}^{(2)}\right)^2 &\leq 2 \sum_{K \in \mathcal{S}_D} \left( \tilde{m}_K \left( C_{t,K,\sigma_1} \|(\nabla p_h + \mathbf{t}_h) \cdot \mathbf{n}\|_{\sigma_1}^2 \right. \right. \\ &\quad \left. \left. + C_{t,K,\sigma_2} \|(\nabla p_h + \mathbf{t}_h) \cdot \mathbf{n}\|_{\sigma_2}^2 \right) \right), \end{aligned}$$

using the inequality  $(a + b)^2 \leq 2(a^2 + b^2)$  and the fact that on the edge  $\sigma_0$  of each subtriangle  $K$ ,  $\mathbf{t}_h$  is prescribed such that  $(\nabla p_h + \mathbf{t}_h)|_K \cdot \mathbf{n}_{\sigma_0} = 0$ . We denote by  $\left(\eta_{\text{DF},D}^{(3)}\right)^2$  this upper bound and study it separately for interior and boundary dual volumes.

A.2.1. Interior dual volumes

Let  $D \in \mathcal{D}_h^{\text{int}}$  and  $\mathcal{S}_D = \{K_0, \dots, K_{n-1}\}$  be its subtriangulation. Using the definition of  $\psi_j^i$  and (A.1), we have

$$\begin{aligned} \mathbf{t}_h|_{K_0} &= \frac{1}{d|K_0|} (\alpha_0^0(\mathbf{x} - V_0^0) + \alpha^0(\mathbf{x} - V_1^0) - \alpha^{n-1}(\mathbf{x} - V_2^0)), \\ \mathbf{t}_h|_{K_i} &= \frac{1}{d|K_i|} (\alpha_0^i(\mathbf{x} - V_0^i) + \alpha^i(\mathbf{x} - V_1^i) - \alpha^{i-1}(\mathbf{x} - V_2^i)), \quad i = 1, \dots, n-1. \end{aligned} \tag{A.5}$$

Using (A.5) and the fact that the normal components of the basis functions  $\psi_j^i$  are constant over the edges, we have

$$\begin{aligned} \|(\nabla p_h + \mathbf{t}_h) \cdot \mathbf{n}_{\sigma_1^i}\|_{\sigma_1^i}^2 &= |\sigma_1^i| \left( \nabla p_h \cdot \mathbf{n}_{\sigma_1^i} + \frac{1}{|\sigma_1^i|} \alpha^i \right)^2, \quad i = 0, \dots, n-1, \\ \|(\nabla p_h + \mathbf{t}_h) \cdot \mathbf{n}_{\sigma_2^0}\|_{\sigma_2^0}^2 &= |\sigma_2^0| \left( \nabla p_h \cdot \mathbf{n}_{\sigma_2^0} - \frac{1}{|\sigma_2^0|} \alpha^{n-1} \right)^2, \\ \|(\nabla p_h + \mathbf{t}_h) \cdot \mathbf{n}_{\sigma_2^i}\|_{\sigma_2^i}^2 &= |\sigma_2^i| \left( \nabla p_h \cdot \mathbf{n}_{\sigma_2^i} - \frac{1}{|\sigma_2^i|} \alpha^{i-1} \right)^2, \quad i = 1, \dots, n-1. \end{aligned}$$

Therefore, we find that  $\left(\eta_{\text{DF},D}^{(3)}\right)^2$  is a quadratic form with respect to  $\mathbf{X} = (\alpha^0, \dots, \alpha^{n-1})^t$ :

$$\left(\eta_{\text{DF},D}^{(3)}\right)^2(\mathbf{X}) = a_{\text{DF}}^{(3)} - \left(\mathbf{B}_{\text{DF}}^{(3)}\right)^t \mathbf{X} + \frac{1}{2} \mathbf{X}^t \mathbb{A}_{\text{DF}}^{(3)} \mathbf{X}, \tag{A.6}$$

where  $a_{\text{DF}}^{(3)} = \sum_{i=0}^{n-1} E_0^i$  and

$$\mathbf{B}_{\text{DF}}^{(3)} = - \begin{pmatrix} E_1^0 + E_2^1 \\ \vdots \\ E_1^{n-1} + E_2^0 \end{pmatrix}, \quad \mathbb{A}_{\text{DF}}^{(3)} = \text{diag}(2(E_3^0 + E_4^1), \dots, 2(E_3^{n-1} + E_4^0)).$$

Here

$$\begin{aligned} E_0^i &= 2\tilde{m}_{K_i} \left( C_{t,K_i,\sigma_1^i} |\sigma_1^i| (\nabla p_h \cdot \mathbf{n}_{\sigma_1^i})^2 + C_{t,K_i,\sigma_2^i} |\sigma_2^i| (\nabla p_h \cdot \mathbf{n}_{\sigma_2^i})^2 \right), \\ E_1^i &= 4C_{t,K_i,\sigma_1^i} \tilde{m}_{K_i} \nabla p_h \cdot \mathbf{n}_{\sigma_1^i}, \\ E_2^i &= -4C_{t,K_i,\sigma_2^i} \tilde{m}_{K_i} \nabla p_h \cdot \mathbf{n}_{\sigma_2^i}, \\ E_3^i &= 2 \frac{C_{t,K_i,\sigma_1^i} \tilde{m}_{K_i}}{|\sigma_1^i|}, \\ E_4^i &= 2 \frac{C_{t,K_i,\sigma_2^i} \tilde{m}_{K_i}}{|\sigma_2^i|}. \end{aligned}$$

A.2.2. Boundary dual volumes

Let  $D \in \mathcal{D}_h^{\text{ext}}$  be a boundary dual volume. In the general case  $n > 2$ , using the conditions (A.2), we find that  $\left(\eta_{\text{DF},D}^{(3)}\right)^2$  is a quadratic form of the form (A.6), where  $a_{\text{DF}}^{(3)} = \tilde{E}_0^0 + \sum_{i=1}^{n-3} E_0^i + \tilde{E}_0^{n-2}$  and

$$\mathbf{B}_{\text{DF}}^{(3)} = - \begin{pmatrix} \tilde{E}_1^0 + E_2^1 \\ E_1^1 + E_2^2 \\ \vdots \\ E_1^{n-3} + E_2^{n-2} \\ \tilde{E}_1^{n-2} \end{pmatrix}, \quad \mathbb{A}_{\text{DF}}^{(3)} = \text{diag}(2(E_3^0 + E_4^1), \dots, 2(E_3^{n-3} + E_4^{n-2}), 2\tilde{E}_3^{n-2}).$$

Here  $E_0^i, E_1^i, E_2^i, E_3^i, E_4^i, i = 0, \dots, n - 2$ , are defined as for interior dual volumes, and we introduce

$$\begin{aligned} \tilde{E}_0^0 &= E_0^0 - E_2^0 \alpha_2^0 + E_5^0 (\alpha_2^0)^2, \\ \tilde{E}_1^0 &= E_1^0 - E_3^0 \alpha_2^0, \\ \tilde{E}_0^{n-2} &= E_0^{n-2} + E_0^{n-1} + E_1^{n-1} \alpha_1^{n-1} + E_4^{n-1} (\alpha_1^{n-1})^2, \\ \tilde{E}_1^{n-2} &= E_1^{n-2} + E_2^{n-1} + E_3^{n-1} \alpha_1^{n-1}, \\ \tilde{E}_3^{n-2} &= E_3^{n-2} + E_4^{n-1}. \end{aligned}$$

In the limit case  $n = 2$ , we find (A.6) with the scalar entries

$$\begin{aligned} a_{\text{DF}}^{(3)} &= E_3^0 + E_4^1, \\ \mathbf{B}_{\text{DF}}^{(3)} &= E_1^0 + E_2^1 - E_3^0 \alpha_2^0 + E_3^1 \alpha_1^1, \\ \mathbb{A}_{\text{DF}}^{(3)} &= E_0^0 + E_1^1 \alpha_1^0 - E_2^0 \alpha_2^0 + E_4^0 (\alpha_2^0)^2 + E_3^1 (\alpha_1^1)^2. \end{aligned}$$

### A.3. Minimization

Given a dual volume  $D \in \mathcal{D}_h$ , we would like to find the vector of degrees of freedom  $\mathbf{X}_0$  such that  $\eta_D(\mathbf{X}_0) = \min_{\mathbf{X}} \eta_D(\mathbf{X})$  in order to improve the estimator. However, as we want to make this improvement with a computational cost as small as possible, we choose not to minimize directly  $\eta_D$ , but rather quadratic forms; precisely, we minimize  $\eta_{\text{R},D}^2 + \min \left\{ \left( \eta_{\text{DF},D}^{(1)} \right)^2, \left( \eta_{\text{DF},D}^{(3)} \right)^2 \right\}$ , *i.e.*,

$$\min \left\{ \min_{\mathbf{X}} \left\{ \eta_{\text{R},D}^2(\mathbf{X}) + \left( \eta_{\text{DF},D}^{(1)} \right)^2(\mathbf{X}) \right\}, \min_{\mathbf{X}} \left\{ \eta_{\text{R},D}^2(\mathbf{X}) + \left( \eta_{\text{DF},D}^{(3)} \right)^2(\mathbf{X}) \right\} \right\}.$$

Using definitions (A.3), (A.4), and (A.6), this amounts to find the minima of two quadratic forms:

$$\mathbf{X}_1 = \operatorname{argmin}_{\mathbf{X}} \left( a^{(1)} - \left( \mathbf{B}^{(1)} \right)^t \mathbf{X} + \frac{1}{2} \mathbf{X}^t \mathbb{A}^{(1)} \mathbf{X} \right),$$

where  $a^{(1)} = a_{\text{R}} + a_{\text{DF}}^{(1)}$ ,  $\mathbf{B}^{(1)} = \mathbf{B}_{\text{R}} + \mathbf{B}_{\text{DF}}^{(1)}$ , and  $\mathbb{A}^{(1)} = \mathbb{A}_{\text{R}} + \mathbb{A}_{\text{DF}}^{(1)}$ , and

$$\mathbf{X}_2 = \operatorname{argmin}_{\mathbf{X}} \left( a^{(3)} - \left( \mathbf{B}^{(3)} \right)^t \mathbf{X} + \frac{1}{2} \mathbf{X}^t \mathbb{A}^{(3)} \mathbf{X} \right),$$

where  $a^{(3)} = a_{\text{R}} + a_{\text{DF}}^{(3)}$ ,  $\mathbf{B}^{(3)} = \mathbf{B}_{\text{R}} + \mathbf{B}_{\text{DF}}^{(3)}$ , and  $\mathbb{A}^{(3)} = \mathbb{A}_{\text{R}} + \mathbb{A}_{\text{DF}}^{(3)}$ .

The matrices  $\mathbb{A}_{\text{R}}$  and  $\mathbb{A}_{\text{DF}}^{(1)}$  are positive, and so is  $\mathbb{A}^{(1)}$ ; it is also definite: one can easily prove that  $\mathbf{X}^t \mathbb{A}_{\text{R}} \mathbf{X}$  and  $\mathbf{X}^t \mathbb{A}_{\text{DF}}^{(1)} \mathbf{X}$  cannot be zero at the same time except if  $\mathbf{X} = 0$ . Thus, finding  $\mathbf{X}_1$  is reduced to computing the solution of the linear system  $\mathbb{A}^{(1)} \mathbf{X} = \mathbf{B}^{(1)}$ . This is also true for  $\mathbf{X}_2$ . Then we define the local estimator as

$$\eta_D^{\text{min,full}} := \min \{ \eta_D(\mathbf{X}_1), \eta_D(\mathbf{X}_2), \eta_D(\mathbf{t}_h) \}. \tag{A.7}$$

Here  $\mathbf{t}_h$  is given by (4.1) and we include the term  $\eta_D(\mathbf{t}_h)$  for the sake of security, as, having minimized the quadratic forms, we are not sure to have found the minimum. Once again, we stress that this minimization process is local and the size of the matrices is small. Thus, the computational cost of the estimator does not increase excessively and remains linear.

### B. A SIMPLIFIED LOCAL MINIMIZATION STRATEGY

We generalize here the “simplified minimization strategy” of [25], Section 7 to the reaction–diffusion case.

Let  $D \in \mathcal{D}_h$  be fixed. We construct  $\mathbf{t}_D \in \mathbf{RTN}(\mathcal{S}_D)$  given by (4.1) only for such  $\sigma \in \mathcal{G}_h$  that lie in some interior side of  $\mathcal{D}_h$ . The other requirement that we impose on  $\mathbf{t}_D$  is that  $(\nabla \cdot \mathbf{t}_D + rp_h, 1)_K = (f, 1)_K$  for all  $K \in \mathcal{S}_D$ . In  $\mathbf{RTN}(\mathcal{S}_D)$ , there are number of interior sides of  $\mathcal{S}_D$  plus number of exterior sides of  $\mathcal{S}_D$  degrees of freedom (fluxes over these sides have to be fixed). For  $D \in \mathcal{D}_h^{\text{int}}$ , the first requirement amounts to fixing the fluxes over the exterior sides of  $\mathcal{S}_D$  and we are left with fixing the fluxes over the interior sides of  $\mathcal{S}_D$ . As the number of interior sides equals the number of the triangles in  $\mathcal{S}_D$ , prescribing  $(\nabla \cdot \mathbf{t}_D + rp_h, 1)_K = (f, 1)_K$  for all  $K \in \mathcal{S}_D$  seemingly leads to a local system of  $|\mathcal{S}_D|$  equations for  $|\mathcal{S}_D|$  unknowns. Note, however, that  $(\nabla \cdot \mathbf{t}_D + rp_h, 1)_D = (f, 1)_D$  when  $D \in \mathcal{D}_h^{\text{int}}$ , by (4.1) prescribed for the exterior sides and by the definition of the vertex-centered finite volume method (2.5). This amounts to  $\sum_{K \in \mathcal{S}_D} (\nabla \cdot \mathbf{t}_D + rp_h, 1)_K = \sum_{K \in \mathcal{S}_D} (f, 1)_K$ . Hence we actually have one degree of freedom left, we can choose the flux over one interior side (by (4.1)) and construct *sequentially* the other degrees of freedom so that  $(\nabla \cdot \mathbf{t}_D + rp_h, 1)_K = (f, 1)_K$ . If  $D \in \mathcal{D}_h^{\text{ext}}$ , this argument is replaced by the fact that we are free to choose the fluxes over the exterior sides. Consequently, *no local linear system is to be solved* in this procedure. We then define a local estimator

$$\eta_D^{\text{min,simpl}} := \min \{ \eta_D(\mathbf{t}_D), \eta_D(\mathbf{t}_h) \}, \tag{B.1}$$

where  $\mathbf{t}_h$  is given by (4.1).

Finally, we remark that in [25], Section 7, an additional parameter  $\alpha$  such that  $\eta_D(\alpha \mathbf{t}_h + (1 - \alpha)\mathbf{t}_D)$  was (approximately) minimal was searched. Then, the value  $\eta_D(\alpha \mathbf{t}_h + (1 - \alpha)\mathbf{t}_D)$  was included in the above minimum. We do not introduce here the parameter  $\alpha$  and do not perform such an additional minimization since the above extremely simple choice already works very well.

### C. A MINIMIZATION STRATEGY USED IN THE NUMERICAL EXPERIMENTS

In the numerical experiments of this paper, we finally use the minimization estimate of the form

$$\| \|p - p_h\| \| \leq \left\{ \sum_{D \in \mathcal{D}_h} (\eta_D^{\text{min}})^2 \right\}^{1/2}, \quad \eta_D^{\text{min}} := \min \left\{ \eta_D^{\text{min,full}}, \eta_D^{\text{min,simpl}} \right\}, \tag{C.1}$$

where  $\eta_D^{\text{min,full}}$  is given by (A.7) and  $\eta_D^{\text{min,simpl}}$  by (B.1). As noted in the text, in the majority of the cases, it is the simple choice (B.1) of Appendix B which gives the minimum. Thus the construction of Appendix A can be completely avoided and one is only led to evaluate  $\eta_D^{\text{min,simpl}}$  of (B.1), which is completely explicit.

*Acknowledgements.* This work was initiated during the summer school CEMRACS organized by the laboratory of the last author in summer 2007 in Luminy/Marseille, France and the authors gratefully acknowledge all the support received.

### REFERENCES

- [1] M. Ainsworth and I. Babuška, Reliable and robust a posteriori error estimating for singularly perturbed reaction–diffusion problems. *SIAM J. Numer. Anal.* **36** (1999) 331–353.
- [2] R.E. Bank and D.J. Rose, Some error estimates for the box method. *SIAM J. Numer. Anal.* **24** (1987) 777–787.
- [3] M. Bebendorf, A note on the Poincaré inequality for convex domains. *Z. Anal. Anwendungen* **22** (2003) 751–756.
- [4] F. Brezzi and M. Fortin, *Mixed and hybrid finite element methods*, Springer Series in Computational Mathematics **15**. Springer-Verlag, New York (1991).
- [5] C. Carstensen and S.A. Funken, Constants in Clément-interpolation error and residual based a posteriori error estimates in finite element methods. *East-West J. Numer. Math.* **8** (2000) 153–175.
- [6] I. Cheddadi, R. Fučík, M.I. Prieto and M. Vohralík, Computable a posteriori error estimates in the finite element method based on its local conservativity: improvements using local minimization. *ESAIM: Proc.* **24** (2008) 77–96.

- [7] A. Ern, A.F. Stephansen and M. Vohralík, *Guaranteed and robust discontinuous Galerkin a posteriori error estimates for convection–diffusion–reaction problems*. HAL Preprint 00193540, submitted for publication (2008).
- [8] R. Eymard, T. Gallouët and R. Herbin, Finite volume methods, in *Handbook of Numerical Analysis*, Vol. **VII**, North-Holland, Amsterdam (2000) 713–1020.
- [9] S. Grosman, An equilibrated residual method with a computable error approximation for a singularly perturbed reaction–diffusion problem on anisotropic finite element meshes. *ESAIM: M2AN* **40** (2006) 239–267.
- [10] F. Hecht, O. Pironneau, A. Le Hyaric and K. Ohtsuka, *FreeFem++*. Technical report, Laboratoire Jacques-Louis Lions, Université Pierre et Marie Curie, Paris, France, <http://www.freefem.org/ff++> (2007).
- [11] S. Korotov, Two-sided a posteriori error estimates for linear elliptic problems with mixed boundary conditions. *Appl. Math.* **52** (2007) 235–249.
- [12] G. Kunert, Robust a posteriori error estimation for a singularly perturbed reaction–diffusion equation on anisotropic tetrahedral meshes. *Adv. Comput. Math.* **15** (2001) 237–259.
- [13] R. Luce and B.I. Wohlmuth, A local a posteriori error estimator based on equilibrated fluxes. *SIAM J. Numer. Anal.* **42** (2004) 1394–1414.
- [14] K. Mer, *Variational analysis of a mixed finite element/finite volume scheme on general triangulations*. Technical report, INRIA 2213, France (1994).
- [15] L.E. Payne and H.F. Weinberger, An optimal Poincaré inequality for convex domains. *Arch. Rational Mech. Anal.* **5** (1960) 286–292.
- [16] W. Prager and J.L. Synge, Approximations in elasticity based on the concept of function space. *Quart. Appl. Math.* **5** (1947) 241–269.
- [17] S. Repin and S. Sauter, Functional a posteriori estimates for the reaction–diffusion problem. *C. R. Math. Acad. Sci. Paris* **343** (2006) 349–354.
- [18] J.E. Roberts and J.-M. Thomas, Mixed and hybrid methods, in *Handbook of Numerical Analysis*, Vol. **II**, North-Holland, Amsterdam (1991) 523–639.
- [19] A.F. Stephansen, *Méthodes de Galerkin discontinues et analyse d’erreur a posteriori pour les problèmes de diffusion hétérogène*. Ph.D. Thesis, École nationale des ponts et chaussées, France (2007).
- [20] T. Vejchodský, Guaranteed and locally computable a posteriori error estimate. *IMA J. Numer. Anal.* **26** (2006) 525–540.
- [21] R. Verfürth, Robust a posteriori error estimators for a singularly perturbed reaction–diffusion equation. *Numer. Math.* **78** (1998) 479–493.
- [22] R. Verfürth, *A note on constant-free a posteriori error estimates*. Technical report, Ruhr-Universität Bochum, Germany (2008).
- [23] M. Vohralík, On the discrete Poincaré–Friedrichs inequalities for nonconforming approximations of the Sobolev space  $H^1$ . *Numer. Funct. Anal. Optim.* **26** (2005) 925–952.
- [24] M. Vohralík, A posteriori error estimates for lowest-order mixed finite element discretizations of convection–diffusion–reaction equations. *SIAM J. Numer. Anal.* **45** (2007) 1570–1599.
- [25] M. Vohralík, *Guaranteed and fully robust a posteriori error estimates for conforming discretizations of diffusion problems with discontinuous coefficients*. Preprint R08009, Laboratoire Jacques-Louis Lions, submitted for publication (2008).
- [26] M. Vohralík, Residual flux-based a posteriori error estimates for finite volume and related locally conservative methods. *Numer. Math.* **111** (2008) 121–158.
- [27] M. Vohralík, Two types of guaranteed (and robust) a posteriori estimates for finite volume methods, in *Finite Volumes for Complex Applications V*, ISTE and John Wiley & Sons, London, UK and Hoboken, USA (2008) 649–656.
- [28] O.C. Zienkiewicz and J.Z. Zhu, A simple error estimator and adaptive procedure for practical engineering analysis. *Internat. J. Numer. Methods Engrg.* **24** (1987) 337–357.