

*quatrième série - tome 45      fascicule 1      janvier-février 2012*

*ANNALES  
SCIENTIFIQUES  
de  
L'ÉCOLE  
NORMALE  
SUPÉRIEURE*

Olivier GLASS & Franck SUEUR & Takéo TAKAHASHI

*Smoothness of the motion of a rigid body immersed  
in an incompressible perfect fluid*

---

SOCIÉTÉ MATHÉMATIQUE DE FRANCE

# SMOOTHNESS OF THE MOTION OF A RIGID BODY IMMERSSED IN AN INCOMPRESSIBLE PERFECT FLUID

BY OLIVIER GLASS, FRANCK SUEUR AND TAKÉO TAKAHASHI

---

**ABSTRACT.** – We consider the motion of a rigid body immersed in an incompressible perfect fluid which occupies a three-dimensional bounded domain. For such a system the Cauchy problem is well-posed locally in time if the initial velocity of the fluid is in the Hölder space  $C^{1,r}$ . In this paper we prove that the smoothness of the motion of the rigid body may be only limited by the smoothness of the boundaries (of the body and of the domain). In particular for analytic boundaries the motion of the rigid body is analytic (till the classical solution exists and in particular till the solid does not hit the boundary). Moreover in this case this motion depends smoothly on the initial data.

**RÉSUMÉ.** – On considère le mouvement d'un corps solide plongé dans un fluide parfait incompressible qui occupe un domaine borné de  $\mathbb{R}^3$ . Pour ce système, le problème de Cauchy est bien posé localement en temps, si la vitesse initiale du fluide est dans l'espace de Hölder  $C^{1,r}$ . Dans cet article, on montre que la régularité du mouvement du corps solide ne peut être limitée que par la régularité des bords (du corps solide et du domaine). En particulier si les bords sont analytiques alors le mouvement du corps solide est analytique (tant que la solution classique existe et que, en particulier, le corps solide ne touche pas le bord). De plus, dans ce cas, le mouvement dépend de manière  $C^\infty$  des données initiales.

## 1. Introduction

The main result of this paper is about the motion of a rigid body immersed in an incompressible perfect fluid which occupies a three-dimensional bounded domain. However our investigation of the problem also yields a slightly new result concerning the case without any rigid body, that is when the fluid fills the whole domain. We first present our result in this case as a warm-up.

### 1.1. Analyticity of the flow of a perfect fluid in a bounded domain

We consider a perfect incompressible fluid filling a bounded regular domain  $\Omega \subset \mathbb{R}^3$  with impermeable boundary  $\partial\Omega$ , so that the velocity and pressure fields  $u(t, x)$  and  $p(t, x)$  satisfy the Euler equations:

$$\begin{aligned} (1) \quad & \frac{\partial u}{\partial t} + (u \cdot \nabla)u + \nabla p = 0, \text{ for } x \in \Omega, \text{ for } t \in (-T, T), \\ (2) \quad & \operatorname{div} u = 0, \text{ for } x \in \Omega, \text{ for } t \in (-T, T), \\ (3) \quad & u|_{t=0} = u_0, \text{ for } x \in \Omega, \\ (4) \quad & u \cdot n = 0, \text{ for } x \in \partial\Omega, \text{ for } t \in (-T, T). \end{aligned}$$

Here  $n$  denotes the unit outward normal on  $\partial\Omega$ . The existence (locally in time) and uniqueness of classical solutions to this problem are well-known, since the classical works of Lichtenstein, Günter and Wolibner who deal with the Hölder spaces  $C^{\lambda, r}(\Omega)$  for  $\lambda$  in<sup>(1)</sup>  $\mathbb{N}$  and  $r \in (0, 1)$ , endowed with the norms:

$$\|u\|_{C^{\lambda, r}(\Omega)} := \sup_{|\alpha| \leq \lambda} \left( \|\partial^\alpha u\|_{L^\infty(\Omega)} + \sup_{x \neq y \in \Omega} \frac{|\partial^\alpha u(x) - \partial^\alpha u(y)|}{|x - y|^r} \right) < +\infty.$$

For  $\lambda$  in  $\mathbb{N}$  and  $r \in (0, 1)$ , we consider the space

$$C_\sigma^{\lambda, r}(\Omega) := \left\{ u \in C^{\lambda, r}(\Omega) \mid \operatorname{div} u = 0 \text{ in } \Omega \text{ and } u \cdot n = 0 \text{ on } \partial\Omega \right\}.$$

**THEOREM 1.** – *There exists a constant  $C_* = C_*(\Omega) > 0$  such that, for any  $\lambda$  in  $\mathbb{N}$  and  $r \in (0, 1)$ , for any  $u_0$  in  $C_\sigma^{\lambda+1, r}(\Omega)$ , there exist*

$$T > T_*(\Omega, \|u_0\|_{C^{1, r}(\Omega)}) := C_* / \|u_0\|_{C^{1, r}(\Omega)}$$

and a unique solution  $u \in C_w((-\!T, T), C^{\lambda+1, r}(\Omega))$  of (1)–(4).

Above, and in the sequel,  $C_w$  refers to continuity with respect to the weak-\* topology of  $C^{\lambda+1, r}(\Omega)$ . Let us refer to the recent papers [7, 13, 14].

**REMARK 1.** – We consider here (and in what follows) the earlier works cited above by using Hölder spaces. Meanwhile, Theorem 1 holds also true for, say, any Sobolev space  $H^s(\Omega)$  with  $s > 5/2$  or even any inhomogeneous Besov spaces  $B_{p, q}^s(\Omega)$ , with  $1 \leq p, q \leq +\infty$  and with  $s > \frac{3}{p} + 1$  (see [7]) or  $s \geq \frac{3}{p} + 1$  if  $q = 1$  (so that  $B_{p, q}^s(\Omega)$  is continuously embedded in  $\operatorname{Lip}(\Omega)$ ). Let us recall that it is still not known whether the classical solutions of Theorem 1 remain smooth for all times or blow up in finite time. Let us also mention the recent work by Bardos and Titi [2] which shows that the 3d Euler equations are not well-posed in the Hölder spaces  $C^{0, r}(\Omega)$ , for  $r \in (0, 1)$ .

To the solution given by Theorem 1 one associates the flow  $\Phi$  defined on  $(-\!T, T) \times \Omega$  by

$$\partial_t \Phi(t, x) = u(t, \Phi(t, x)) \text{ and } \Phi(0, x) = x.$$

The flow  $\Phi$  can be seen as a continuous function of the time with values in the volume and orientation preserving diffeomorphisms defined on  $\Omega$ ; in the sequel, in order to focus on the

<sup>(1)</sup> In the whole paper the notations  $\mathbb{N}$  (respectively  $\mathbb{N}^*$ ) stand respectively for the set of all nonnegative (positive) integers.

regularity properties, we consider  $\Phi$  as a continuous function of  $t \in (-T, T)$  with values in the functions from  $\Omega$  to  $\mathbb{R}^3$ .

The first result of this paper shows that the smoothness of the trajectories is only limited by the smoothness of the domain boundary.

**THEOREM 2.** – *Under the hypotheses of Theorem 1, and assuming moreover that the boundary  $\partial\Omega$  is  $C^{k+\lambda+1,r}$ , with  $k \in \mathbb{N}$ , the flow  $\Phi$  is  $C^k$  from  $(-T, T)$  to  $C^{\lambda+1,r}(\Omega)$ .*

Theorem 2 entails in particular that if the boundary  $\partial\Omega$  is  $C^\infty$  then the flow  $\Phi$  is  $C^\infty$  from  $(-T, T)$  to  $C^{\lambda+1,r}(\Omega)$ . We will precisely study this limit case “ $k = \infty$ ” thanks to general ultradifferentiable classes, which encompass in particular the class of analytic functions, as well as Gevrey and quasi-analytic classes. Let  $N := (N_s)_{s \geq 0}$  be a sequence of positive numbers. Let  $U$  be a domain in  $\mathbb{R}^n$  and let  $E$  be a Banach space endowed with the norm  $\|\cdot\|_E$ . We denote by  $\mathcal{C}\{N\}(U; E)$  the class of functions  $f : U \rightarrow E$  such that for any compact  $K \subset U$  there exist  $L_f, C_f > 0$  such that for all  $s \in \mathbb{N}$  and for all  $x \in K$ ,

$$(5) \quad \|\nabla^s f(x)\| \leq C_f L_f^s N_s,$$

as a function with values in the set of symmetric  $s$ -linear continuous operators on  $U$ . Since for any positive  $\lambda > 0$  there holds  $\mathcal{C}\{N\} = \mathcal{C}\{\lambda N\}$ , there is no loss of generality to assume  $N_0 = 1$ . When  $N$  is increasing, logarithmically convex (i.e., when the sequence  $(N_{j+1}/N_j)_{j \geq 0}$  does not decrease) then the class  $\mathcal{C}\{N\}(U; E)$  is an algebra with respect to pointwise multiplication. Theorem 2 extends as follows:

**THEOREM 3.** – *Assume that the hypotheses of Theorem 1 hold, and moreover that the boundary  $\partial\Omega$  is in  $\mathcal{C}\{N\}$ , where  $N := (s!M_s)_{s \geq 0}$  with  $(M_s)_{s \geq 0}$  an increasing, logarithmically convex sequence of real numbers, with  $M_0 = 1$ , and satisfying*

$$(6) \quad \sup_{s \geq 1} \left( \frac{M_s}{M_{s-1}} \right)^{1/s} \leq C_d < \infty.$$

*Then the flow  $\Phi$  is in  $\mathcal{C}\{N\}((-T, T); C^{\lambda+1,r}(\Omega))$ . In particular if the boundary  $\partial\Omega$  is analytic (respectively Gevrey of order  $m > 1$ ) then  $\Phi$  is analytic (respectively Gevrey of order  $m > 1$ ) from  $(-T, T)$  to  $C^{\lambda+1,r}(\Omega)$ .*

The particular cases of the last sentence are obtained when  $N$  is the sequence  $N_j := (j!)^m$ , with  $m = 1$  (respectively  $m > 1$ ); in these cases  $\mathcal{C}\{N\}(E)$  is the set of analytic functions (respectively Gevrey of order  $m$ ). An important difference between the class of analytic functions and the class of Gevrey functions of order  $m > 1$  is that only the first one is quasi-analytic<sup>(2)</sup>. The logarithmic convexity of  $M$  entails that for any  $s \in \mathbb{N}^*$  and for any  $\alpha := (\alpha_1, \dots, \alpha_s) \in \mathbb{N}^s$ ,

$$(7) \quad M_{\alpha_1} \cdots M_{\alpha_s} \leq M_{|\alpha|},$$

where the notation  $|\alpha|$  stands for  $|\alpha| := \alpha_1 + \cdots + \alpha_s$ . The condition (6) is necessary and sufficient for the class  $\mathcal{C}\{N\}$  to be stable under derivation (cf. for instance [23, Corollary 2]).

<sup>(2)</sup> Actually the Denjoy-Carleman theorem states that  $\mathcal{C}\{N\}(E)$  is quasi-analytic, with  $N$  as in Theorem 3 if and only if  $\sum_{j \geq 0} \frac{M_j}{(j+1)M_{j+1}} < \infty$ .

We will prove Theorem 3 by induction in such a way that Theorem 2 will be a simple byproduct of the proof of Theorem 3.

REMARK 2. – Theorem 3 fills the gap between the results of Chemin [4], [5], Serfati [19], [18], [20], Gamblin [9], [8] which prove analyticity of the flow for fluids filling the whole space and the paper [12] of Kato which proves the smoothness in time for classical solutions in a smooth bounded domain.

REMARK 3. – It is fair to point out that the works of Gamblin and Kato cover the more general case of spatial dimension  $d \geq 2$ . Moreover Gamblin succeeds to prove that the flow of Yudovich's solutions (that is, having merely bounded vorticity) is Gevrey 3, when the fluid occupies the whole plane. We will address the extension of this property in a bounded domain in a subsequent work.

REMARK 4. – As emphasized by Kato (cf. Example (0.2) in [12]) the smoothness of the trajectories can only be proved under some kind of global constraint, namely the wall condition (4) in the case studied here of a bounded domain. In the unbounded case one would have to restrict the behavior of  $u$  or  $p$  at infinity (for instance Gamblin [9] considers initial velocities  $u_0$  which are in  $L^q(\mathbb{R}^3)$  with  $1 < q < +\infty$ , in addition to be in  $C^{\lambda,r}$ ).

REMARK 5. – It is natural to wonder if Theorem 3 admits a local (in space) counterpart. We do not address this issue here since it does not seem relevant for considering the smoothness of the motion of an immersed body.

REMARK 6. – Gamblin's approach, following Chemin's one, uses a representation of the pressure via a singular integral operator, and relies on the repeated action on it of the material derivative  $D := \partial_t + u \cdot \nabla$ . On the opposite Kato's approach for bounded domains lies on the analysis of the action of the material derivative with differential operators, the non-local features being tackled with a classical elliptic regularity lemma. Here we will refine the combinatorics in Kato's approach to obtain the analyticity, motivated by Gamblin's result.

In the case where the boundary is analytic, the flow depends smoothly on the initial velocity. More precisely let us introduce, for any  $R > 0$ ,

$$C_{\sigma,R}^{\lambda+1,r}(\Omega) := \left\{ u \in C_{\sigma}^{\lambda+1,r}(\Omega) \mid \|u\|_{C^{\lambda+1,r}(\Omega)} < R \right\}.$$

Then the following holds true.

COROLLARY 1. – *Let  $\lambda$  in  $\mathbb{N}$ ,  $r \in (0, 1)$  and  $R > 0$ . Suppose that  $\partial\Omega$  is analytic. Then the mapping*

$$u_0 \in C_{\sigma,R}^{\lambda+1,r}(\Omega) \mapsto \Phi \in C^{\omega}((-T_*, T_*); C^{\lambda+1,r}(\Omega))$$

*is  $C^{\infty}$ , where  $T_* = T_*(\Omega, R)$  is given by Theorem 1.*

Above the notation  $C^{\omega}$  stands for the space of real-analytic functions.

## 1.2. Analyticity of the motion of a rigid body immersed in an incompressible perfect fluid

The second and main result of this paper is about the motion of a rigid body immersed in an incompressible homogeneous perfect fluid, so that the system fluid-rigid body now occupies  $\Omega$ . The solid is supposed to occupy at each instant  $t \geq 0$  a closed connected subset  $\mathcal{S}(t) \subset \Omega$  which is surrounded by a perfect incompressible fluid filling the domain  $\mathcal{F}(t) := \Omega \setminus \mathcal{S}(t)$ . The equations modeling the dynamics of the system read

$$(8) \quad \frac{\partial u}{\partial t} + (u \cdot \nabla)u + \nabla p = 0, \text{ for } x \in \mathcal{F}(t),$$

$$(9) \quad \operatorname{div} u = 0, \text{ for } x \in \mathcal{F}(t),$$

$$(10) \quad m x_B''(t) = \int_{\partial \mathcal{S}(t)} p n \, d\Gamma,$$

$$(11) \quad (\mathcal{J}r)'(t) = \int_{\partial \mathcal{S}(t)} (x - x_B) \wedge p n \, d\Gamma,$$

$$(12) \quad u \cdot n = 0, \text{ for } x \in \partial \Omega,$$

$$(13) \quad u \cdot n = v \cdot n, \text{ for } x \in \partial \mathcal{S}(t),$$

$$(14) \quad u|_{t=0} = u_0,$$

$$(15) \quad x_B(0) = x_0, \ell(0) = \ell_0, r(0) = r_0.$$

The equations (10) and (11) are the laws of conservation of linear momentum and angular momentum. Here we denote by  $m$  the mass of the rigid body (normalized in order that the density of the fluid is  $\rho_F = 1$ ), by  $x_B(t)$  the position of its center of mass,  $n(t, x)$  denotes the unit normal vector pointing outside the fluid and  $d\Gamma(t)$  denotes the surface measure on  $\partial \mathcal{S}(t)$ . The time-dependent vector  $\ell(t) := x_B'(t)$  denotes the velocity of the center of mass of the solid and  $r$  denotes its angular speed. The vector field  $u$  is the fluid velocity,  $v$  is the solid velocity and  $p$  is the pressure field in the fluid domain. Finally in (11) the matrix  $\mathcal{J}$  denotes the moment of inertia (which depends on time).

The solid velocity is given by

$$(16) \quad v(t, x) := \ell(t) + r(t) \wedge (x - x_B(t)).$$

The rotation matrix  $Q \in SO(3)$  is deduced from  $r$  by the following differential equation (where we use the convention to consider the operator  $r(t) \wedge \cdot$  as a matrix):

$$(17) \quad Q'(t) = r(t) \wedge Q(t) \text{ and } Q(0) = \operatorname{Id}_3.$$

According to Sylvester's law,  $\mathcal{J}$  satisfies

$$(18) \quad \mathcal{J} = Q \mathcal{J}_0 Q^*,$$

where  $\mathcal{J}_0$  is the initial value of  $\mathcal{J}$ . Finally, the domains occupied by the solid and the fluid are given by

$$(19) \quad \mathcal{S}(t) = \left\{ x_B(t) + Q(t)(x - x_0), x \in \mathcal{S}_0 \right\} \text{ and } \mathcal{F}(t) = \Omega \setminus \overline{\mathcal{S}(t)}.$$

Given a positive function  $\rho_{\mathcal{S}_0} \in L^\infty(\mathcal{S}_0; \mathbb{R})$  describing the density in the solid (normalized in order that the density of the fluid is  $\rho_F = 1$ ), the data  $m$ ,  $x_0$  and  $\mathcal{J}_0$  can be computed by

its first moments

$$(20) \quad m := \int_{\phi_0} \rho_{\phi_0} dx > 0,$$

$$(21) \quad mx_0 := \int_{\phi_0} x \rho_{\phi_0}(x) dx,$$

$$(22) \quad \mathcal{J}_0(t) := \int_{\phi_0} \rho_{\phi_0}(x) (|x - x_0|^2 \text{Id}_3 - (x - x_0) \otimes (x - x_0)) dx.$$

For potential flows the first studies of the problem (8)–(15) date back to D’Alembert, Kelvin and Kirchhoff. In the general case, the existence and uniqueness of classical solutions to the problem (8)–(15) is now well-understood thanks to the works of Ortega, Rosier and Takahashi [16, 15], Rosier and Rosier [17] in the case of a body in  $\mathbb{R}^3$  and Houot, San Martin and Tucsnak [11] in the case (considered here) of a bounded domain, in Sobolev spaces  $H^m$ ,  $m \geq 3$ . We will use a rephrased version of their result in Hölder spaces, which reads as follows. Let

$$\begin{aligned} \tilde{C}_\sigma^{\lambda,r}(\mathcal{F}_0, x_0) := & \left\{ (\ell_0, r_0, u_0) \in \mathbb{R}^3 \times \mathbb{R}^3 \times C^{\lambda,r}(\mathcal{F}_0) \mid \text{div}(u_0) = 0 \text{ in } \mathcal{F}_0, \right. \\ & \left. u_0 \cdot n = 0 \text{ on } \partial\Omega \text{ and } (u_0 - v_0) \cdot n = 0 \text{ on } \partial\phi_0 \text{ with } v_0 := \ell_0 + r_0 \wedge (x - x_0) \right\}. \end{aligned}$$

**THEOREM 4.** – *Let be given  $\lambda \in \mathbb{N}$ ,  $r \in (0, 1)$  and a regular closed connected subset  $\phi_0 \subset \Omega$ . Consider a positive function  $\rho_{\phi_0} \in L^\infty(\phi_0)$ . We denote by  $m$  the mass,  $x_0$  the position of the center of mass of  $\phi_0$ ,  $\mathcal{J}_0$  the initial matrix of inertia and  $\mathcal{F}_0 := \Omega \setminus \phi_0$ . There exists a constant  $C_* = C_*(\Omega, \phi_0, \rho_{\phi_0}) > 0$  such that the following holds. Consider  $(\ell_0, r_0, u_0)$  in  $\tilde{C}_\sigma^{\lambda+1,r}(\mathcal{F}_0, x_0)$ . Then there exists*

$$(23) \quad T > T_*(\Omega, \phi_0, \rho_{\phi_0}, \|u_0\|_{C^{1,r}(\mathcal{F}_0)} + \|\ell_0\| + \|r_0\|) := \frac{C_*}{\|u_0\|_{C^{1,r}(\mathcal{F}_0)} + \|\ell_0\| + \|r_0\|},$$

such that the problem (8)–(19) admits a unique solution

$$(x_B, r, u) \in C^1((-T, T)) \times C^0((-T, T)) \times L^\infty((-T, T), C^{\lambda+1,r}(\mathcal{F}(t))).$$

Moreover  $(x_B, r) \in C^2((-T, T)) \times C^1((-T, T))$ ,  $u \in C_w((-T, T); C^{\lambda+1,r}(\mathcal{F}(t)))$  and  $u \in C((-T, T); C^{\lambda+1,r'}(\mathcal{F}(t)))$ , for  $r' \in (0, r)$ ; and the same holds for  $\partial_t u$  instead of  $u$  with  $\lambda$  instead of  $\lambda + 1$ .

**REMARK 7.** – *The notation  $L^\infty((-T, T), C^{\lambda+1,r}(\mathcal{F}(t)))$  is slightly improper since the domain  $\mathcal{F}(t)$  depends on  $t$ . One should more precisely think of  $u$  as the section of a vector bundle. However, since we think that there should not be any ambiguity, we will keep this notation in what follows. The space  $C((-T, T); C^{\lambda+1,r'}(\mathcal{F}(t)))$  stands for the space of functions defined in the fluid domain, which can be extended to functions in  $C((-T, T); C^{\lambda+1,r'}(\mathbb{R}^3))$ .*

**REMARK 8.** – *The regularity of  $\rho_{\phi_0}$  is not an issue here since the solid density only intervenes through  $m$ ,  $x_0$  and  $\mathcal{J}_0$ .*

**REMARK 9.** – *Let us give here a few comments about the lifetime of the solutions given by Theorem 4. First let us stress that the lifetime given by (23) only depends on the  $C^{1,r}(\mathcal{F}_0)$  norm, whatever is the value of  $\lambda$  in  $\mathbb{N}$ , as in Theorem 1 for the case of the fluid alone. Yet in the case where a rigid body is moving in the fluid, the lifetime may also be limited by the geometry. Note in particular that the solutions given by Th. 4 describe some solutions for which the moving body  $\mathcal{J}(t)$  does not hit the boundary  $\partial\Omega$ . Actually in two dimensions such a collision is the only limitation of the lifetime of the classical solutions.*

For the sake of completeness, we prove Theorem 4 in the appendix. This proof will also allow us to get the following result concerning the continuous dependence of the solution with respect to initial data, which we will use later. Let us denote, for any  $R > 0$ ,

$$\tilde{C}_{\sigma,R}^{\lambda,r}(\mathcal{F}_0, x_0) := \left\{ (\ell_0, r_0, u_0) \in \tilde{C}_{\sigma}^{\lambda,r}(\mathcal{F}_0, x_0) \mid \|u_0\|_{C^{\lambda,r}(\mathcal{F}_0)} + \|\ell_0\| + \|r_0\| < R \right\}.$$

**PROPOSITION 1.** – *Let  $R > 0$ . In the context of Theorem 4, consider  $(\ell_0^1, r_0^1, u_0^1)$  and  $(\ell_0^2, r_0^2, u_0^2)$  in  $\tilde{C}_{\sigma,R}^{\lambda+1,r}(\mathcal{F}_0, x_0)$ . Let*

$$T = T_*(\Omega, \mathcal{J}_0, \rho_{\mathcal{J}_0}, R).$$

*Consider  $(\ell^1, r^1, u^1)$  and  $(\ell^2, r^2, u^2)$  the corresponding solutions of (8)–(19) in  $[-T; T]$ , and let  $\eta_1$  and  $\eta_2$  be the flows of  $u^1, u^2$  respectively. Then for some  $K = K(\Omega, \mathcal{J}_0, \rho_{\mathcal{J}_0}, R) > 0$  one has*

$$\begin{aligned} & \|\eta_1 - \eta_2\|_{L^\infty(-T, T; C^{\lambda+1, r}(\mathcal{F}_0))} + \|u_1(t, \eta_1(t, \cdot)) - u_2(t, \eta_2(t, \cdot))\|_{L^\infty(-T, T; C^{\lambda+1, r}(\mathcal{F}_0))} \\ & \quad + \|(\ell_1, r_1) - (\ell_2, r_2)\|_{L^\infty(-T, T; \mathbb{R}^6)} \\ & \leq K \left[ \|\ell_0^1 - \ell_0^2\| + \|r_0^1 - r_0^2\| + \|u_0^1 - u_0^2\|_{C^{\lambda+1, r}(\mathcal{F}_0)} \right]. \end{aligned}$$

The aim of this paper is to prove additional smoothness of the motion of the solid and of the trajectories of the fluid particles. We define the flow corresponding to the fluid as

$$\partial_t \Phi^{\mathcal{J}}(t, x) = u(t, \Phi^{\mathcal{J}}(t, x)) \text{ and } \Phi^{\mathcal{J}}(0, x) = x, \text{ for } (t, x) \in (-T, T) \times \mathcal{F}_0,$$

and the flow corresponding to the solid as

$$\partial_t \Phi^{\mathcal{J}}(t, x) = v(t, \Phi^{\mathcal{J}}(t, x)) \text{ and } \Phi^{\mathcal{J}}(0, x) = x, \text{ for } (t, x) \in (-T, T) \times \mathcal{J}_0.$$

The flow corresponding to the solid is a rigid movement, that can be considered as a function of  $t \in (-T, T)$  with values in the special Euclidean group  $SE(3)$ . Let us emphasize that in the previous result  $T$  is sufficiently small in order that there is no collision between  $\mathcal{J}(t)$  and the boundary  $\partial\Omega$ .

We introduce, for  $T > 0$ ,  $\lambda \in \mathbb{N}$  and  $r \in (0, 1)$ ,

$$\mathcal{A}_{\mathcal{J}_0}^{\lambda,r}(T) := C^\omega((-T, T); SE(3) \times C^{\lambda,r}(\mathcal{F}_0)),$$

the space of real-analytic functions from  $(-T, T)$  to  $SE(3) \times C^{\lambda,r}(\mathcal{F}_0)$ .

The main result of this paper is the following.

**THEOREM 5.** – *Assume that the boundaries  $\partial\Omega$  and  $\partial\mathcal{J}_0$  are analytic and that the assumptions of Theorem 4 are satisfied. Then  $(\Phi^{\mathcal{J}}, \Phi^{\mathcal{J}}) \in \mathcal{A}_{\mathcal{J}_0}^{\lambda+1,r}(T)$ .*



The proof of Theorem 5 establishes that the motion of the solid and the trajectories of the fluid particles are at least as smooth as the boundaries  $\partial\Omega$  and  $\partial\phi_0$ . It would also be possible to consider general ultradifferentiable classes as in Theorem 3 or a limited regularity for the boundary as in Theorem 2.

REMARK 10. – Theorem 5 does not involve the concept of energy. However it gives as a corollary that the energy of the fluid  $E^{\mathcal{F}}(t) := \frac{1}{2} \int_{\mathcal{F}(t)} u^2 dx$  is analytic on  $(-T, T)$ , since the total energy of the fluid-body system  $E^{\mathcal{F}}(t) + E^{\phi}(t)$  is constant, where the energy of the body reads  $E^{\phi} := \frac{1}{2} m \ell^2 + \frac{1}{2} \mathcal{J} r \cdot r$ .

Let us now state the following corollary of Theorem 5, which is the counterpart of Corollary 1 in the case where a rigid body is immersed in an incompressible homogeneous perfect fluid.

COROLLARY 2. – *Let be given  $\lambda$  in  $\mathbb{N}$ ,  $r \in (0, 1)$ ,  $R > 0$  and a closed connected regular subset  $\phi_0 \subset \Omega$ , a positive function  $\rho_{\phi_0}$  in  $L^\infty(\phi_0)$ . Assume that the boundaries  $\partial\Omega$  and  $\partial\phi_0$  are analytic. Then the mapping*

$$(\ell_0, r_0, u_0) \in \tilde{C}_{\sigma, R}^{\lambda+1, r}(\mathcal{F}_0, x_0) \mapsto (\Phi^\phi, \Phi^{\mathcal{F}}) \in \mathcal{C}_{\phi_0}^{\lambda+1, r}(T_*)$$

is  $C^\infty$ , where  $T_* = T_*(\Omega, \phi_0, \rho_{\phi_0}, R)$  is given by Theorem 4.

The proof of Corollary 2 is omitted since its proof is similar to the proof of Corollary 1. It is the equivalent of the one given in Section 2.2 for Corollary 1.

REMARK 11. – *When the boundary is merely  $C^\infty$ , we do not prove the analyticity of the flow, hence Corollary 2 cannot be deduced. However a simple compactness argument shows that the operator*

$$(\ell_0, r_0, u_0) \in \tilde{C}_{\sigma, R}^{\lambda+1, r}(\mathcal{F}_0, x_0) \mapsto (\Phi^\phi, \Phi^{\mathcal{F}}) \in C^\infty([-T_*, T_*]; SE(3) \times C^{\lambda+1, r'}(\mathcal{F}_0))$$

is continuous for  $r' < r$  (even, to  $C^\infty([-T_*, T_*]; SE(3) \times C_w^{\lambda+1, r}(\mathcal{F}_0))$ ). Indeed, for a sequence converging to  $(\ell_0, r_0, u_0)$ , we have both compactness of the images in  $C^k([-T_*, T_*]; SE(3) \times C^{\lambda+1, r'}(\mathcal{F}_0))$ , (by the uniform estimates in  $C^{k+1}([-T_*, T_*]; SE(3) \times C^{\lambda+1, r}(\mathcal{F}_0))$ ) and the continuity for a weaker norm in the range such as  $C^0([-T_*, T_*]; SE(3) \times C^{\lambda+1, r}(\mathcal{F}_0))$ , which follows from Proposition 1).

Another Corollary of Theorem 5, or, to be more precise, of the estimates leading to Theorem 5, deals with an inverse problem on the trajectory of the solid. A trivial consequence of the analyticity in time of the trajectory of the solid is that, if we know this trajectory for some time interval  $[-\tau, \tau]$  inside  $[-T_*, T_*]$  where the solution is defined (see Theorem 4)—without knowing precisely  $u_0$ —, then we know it for the whole time interval (in the sense of unique continuation). The following corollary states that we can be a little more quantitative on this unique continuation property.

COROLLARY 3. – *We consider  $\Omega$ ,  $\phi_0$ , and  $\rho_{\phi_0}$  fixed as previously. Let  $R > 0$ . Consider  $\tau > 0$  such that*

$$\tau < T_*(\Omega, \phi_0, \rho_{\phi_0}, R),$$

where  $T_*$  is defined in Theorem 4. There exist  $C = C(\tau, \Omega, \phi_0, \rho_{\phi_0}, R) > 0$  and  $\delta = \delta(\tau, \Omega, \phi_0, \rho_{\phi_0}, R)$  in  $(0, 1)$  such that the following holds. Let  $(\ell_0^1, r_0^1, u_0^1)$  and  $(\ell_0^2, r_0^2, u_0^2)$

in  $\tilde{C}_{\sigma,R}^{\lambda+1,r}(\mathcal{F}_0, x_0)$ . Let  $(\ell_i, r_i, u_i)$  be the corresponding solution, and  $\Phi_i^\delta$  the corresponding solid flows. Then one has

$$(24) \quad \|\Phi_1^\delta - \Phi_2^\delta\|_{L^\infty(-T_*, T_*)} \leq C \|\Phi_1^\delta - \Phi_2^\delta\|_{L^\infty(-\tau, \tau)}^\delta.$$

Let us emphasize that the constants  $C > 0$  and  $\delta \in (0, 1)$  depend on the knowledge (of an estimate) of the size of the initial data, but not on the initial data itself.

REMARK 12. – As will follow from the proof, we could in fact replace the norm in the left hand side by a stronger norm such as  $C^k([-T_*, T_*])$ , and observe from a time interval  $(a, b) \subset (-T_*, T_*)$  which does not contain 0.

Corollary 3 will be proved in Section 7.

Let us now briefly describe the structure of the paper. In Section 2, we prove the claims concerning the system without immersed body, namely, Theorem 3 and Corollary 1. In Section 3, we describe the structure of the proof, reduced to the proof of two main propositions. In Section 4, we describe some formal identities needed in the proof. Section 5 establishes the two main propositions. In Section 6 we prove the formal identities. In Section 7, we prove Corollary 3. Finally, in Section 8, we prove Theorem 4 and Proposition 1.

REMARK 13. – In the last years, several papers have been devoted to the study of the dynamics of a rigid body immersed into a fluid governed by the Navier-Stokes equations. We refer to the introduction of [15] for a survey of these results.

## 2. Proofs of Theorem 3 and Corollary 1

### 2.1. Proof of Theorem 3

From now on, we fix  $\lambda \in \mathbb{N}$  and  $r \in (0, 1)$ , and we introduce the following norms for functions defined in  $\Omega$  or  $\partial\Omega$

$$\begin{aligned} |\cdot| &:= \|\cdot\|_{C^{\lambda,r}(\Omega)}, & |\cdot|_{\partial\Omega} &:= \|\cdot\|_{C^{\lambda,r}(\partial\Omega)}, \\ \|\cdot\| &:= \|\cdot\|_{C^{\lambda+1,r}(\Omega)}, & \|\cdot\|_{\partial\Omega} &:= \|\cdot\|_{C^{\lambda+1,r}(\partial\Omega)}. \end{aligned}$$

First it is classical to get that the flow map  $\Phi$  is  $L^\infty((-T, T), C^{\lambda+1,r}(\Omega))$  from its definition and Gronwall's Lemma. In order to tackle the higher time derivatives of  $\Phi$  we will use the material derivative

$$D := \partial_t + u \cdot \nabla.$$

Let us also introduce  $\rho$  as a function defined on a neighborhood of  $\partial\Omega$  as the signed distance to  $\partial\Omega$ , let us say, negative inside  $\Omega$ . Since we assume that the boundary  $\partial\Omega$  is in  $\mathcal{C}\{N\}$  with  $N$  satisfying the hypothesis of Theorem 3, there exists  $c_\rho > 1$  such that for all  $s \in \mathbb{N}$ ,

$$(25) \quad \|\nabla^s \rho\| \leq c_\rho^s s! M_s,$$

as a function with values in the set of symmetric  $s$ -linear forms. Let us introduce for  $L > 0$  the following function

$$(26) \quad \gamma(L) := \sup_{k \geq 1} \left\{ 3 \sum_{s=2}^{k+1} L^{1-s} (c_\rho C_d)^s \left( \frac{k+1}{k-s+2} \right)^2 20^s + C_\Omega \sum_{s=1}^{k-1} \frac{k-s}{Lks} \left( \frac{k+1}{(k-s+1)s} \right)^2 \right\}.$$

The constant  $C_d$  (which can be assumed to be larger than 1) above was introduced in (6); the constant  $C_\Omega$  depends only on the geometry of  $\Omega$  and will be introduced below in (46). Without loss of generality, we suppose that  $c_\rho C_d \geq 1$ . Now we fix  $L$  large enough such that

$$(27) \quad \gamma(L) \leq \frac{1}{3c_\tau}.$$

The constant  $c_\tau$  appearing in (27) depends only on the geometry and will be introduced in Lemma 1.

We are going to prove by induction that, supposing that  $u$  is smooth, there exists  $\tau \in (0, T)$  such that one has for all  $k \in \mathbb{N}$  and all  $t \in [-\tau, \tau]$ ,

$$(28) \quad \|D^k u\| + |\nabla D^{k-1} p| \leq \frac{k! M_k L^k}{(k+1)^2} \|u\|^{k+1},$$

where the second term is omitted when  $k = 0$ .

Let us briefly explain why this is sufficient. The time-invariance of the equation and a compactness argument entail that for any  $\bar{\tau} \in (0, T)$  there exists  $L > 0$  such that for all  $k \in \mathbb{N}$ , for all  $t \in [-\bar{\tau}, \bar{\tau}]$ , the inequality (28) holds true. Since

$$\partial_t^{k+1} \Phi(t, x) = D^k u(t, \Phi(t, x)),$$

this establishes Theorem 3 for smooth solutions. To get the general case, we proceed by regularization: given  $u_0 \in C_\sigma^{\lambda+1, r}(\Omega)$ , we consider a sequence  $(u_0^n)$  of vector fields in  $C^\infty(\bar{\Omega}) \cap C_\sigma^{\lambda+1, r}(\Omega)$  such that  $u_0^n \rightarrow u_0$  in  $C^{\lambda+1, r'}(\Omega)$  for any  $r' < r$ . The existence of such a sequence is not difficult to establish: one considers a sequence  $v_0^n$  converging to  $u_0$  in  $C^{\lambda+1, r'}(\Omega)$  for any  $r' < r$  and then defines  $u_0^n := P(v_0^n)$  where  $P$  is the Leray projector associated to the domain  $\Omega$ . Using the continuity of  $P$  in Hölder spaces, the relevance of  $(u_0^n)$  follows. Using Theorem 1, we get a uniform time of existence  $\tau \in (0, T)$  and some smooth solutions  $u^n$  associated to the initial condition  $u_0^n$ . Note that smooth solutions in  $x$  are automatically smooth in  $t$  by using the equation.

Now we deduce the following estimates on the flows  $\Phi^n$  associated to  $u^n$ :

$$\|\partial_t^{k+1} \Phi^n(t, x)\| \leq C \frac{k! M_k L^k}{(k+1)^2} \|u^n\|^{k+1},$$

for some  $C > 0$  independent of  $k$  and  $n$  (see e.g. Lemma 11 below). These estimates easily pass to the limit as  $n \rightarrow +\infty$ .

Therefore, we will now work on a smooth flow, dropping the index  $n$ .

REMARK 14. – One could ask whether the flow could get smoother in  $x$  at some time: it could be that some cancellations arise in the composition of the field with the flow. Loosely speaking Theorem 5 of Shnirelman's paper [21] indicates that it is never the case, despite the fact that its setting is slightly different, Shnirelman considering fluid motions on the two-dimensional torus, in a Besov space  $B_{2, \infty}^s$  with  $s > 3$ .

For  $k = 0$ , there is nothing to prove. Let us assume that (28) holds up to order  $k - 1$ . To estimate  $D^k u$  we will use the following regularity lemma for the div-curl system.

LEMMA 1 (Regularity). – *Let  $\Gamma_i$  ( $i = 1, \dots, g$ ) be a family of smooth oriented loops which generates a basis of the first singular homology space of  $\Omega$  with real coefficients. For any  $u \in C^{\lambda, r}(\Omega)$  such that*

$$\operatorname{div} u \in C^{\lambda, r}(\Omega), \quad \operatorname{curl} u \in C^{\lambda, r}(\Omega), \quad u \cdot n \in C^{\lambda+1, r}(\partial\Omega),$$

*one has  $u \in C^{\lambda+1, r}(\Omega)$  and there exists a constant  $c_\tau$  depending only on  $\Omega$  and  $\Gamma_i$  ( $1 \leq i \leq g$ ) such that*

$$(29) \quad \|u\| \leq c_\tau (|\operatorname{div} u| + |\operatorname{curl} u| + \|u \cdot n\| + |\Pi u|_{\mathbb{R}^g}),$$

*where  $\Pi$  is the mapping defined by  $u \mapsto (\oint_{\Gamma_1} u \cdot \tau d\sigma, \dots, \oint_{\Gamma_g} u \cdot \tau d\sigma)$ .*

Let us refer to [10] for singular homology spaces in the context of PDEs.

*Proof.* – This is more or less classical. The same result appears for instance in Kato's paper (see [12, Lemma 1.2]) with  $|\Pi(u)|_{\mathbb{R}^g}$  replaced by  $\|\tilde{\Pi}(u)\|_{C^{\lambda, r}(\Omega)}$ , where  $\tilde{\Pi}$  is the  $L^2(\Omega)$  projector on the tangential harmonic vector fields (that is, having null divergence, curl and normal trace):

$$(30) \quad \|u\| \leq c (|\operatorname{div} u| + |\operatorname{curl} u| + \|u \cdot n\| + |\tilde{\Pi}u|).$$

Given  $u \in C^{\lambda, r}(\Omega)$ , we apply (30) to  $u - \tilde{\Pi}(u)$ , so that

$$(31) \quad \|u - \tilde{\Pi}(u)\| \leq c (|\operatorname{div} u| + |\operatorname{curl} u| + \|u \cdot n\|).$$

Now we notice that on the space of tangential harmonic vector fields,  $\Pi$  is injective, since a vector field  $v$  satisfying  $\operatorname{curl} v = 0$  and  $\Pi(v) = 0$  is a global gradient field (as a matter of fact,  $\Pi$  is even bijective on this space as a consequence of de Rham's theorem). Since the space of tangential harmonic vector fields is finite-dimensional, it follows that for some  $C > 0$  independent of  $u$ , one has

$$\|\tilde{\Pi}(u)\| \leq C |\Pi(\tilde{\Pi}(u))|_{\mathbb{R}^g}.$$

Using the continuity of  $\Pi$  and (31), we infer

$$|\Pi(u - \tilde{\Pi}(u))|_{\mathbb{R}^g} \leq C (|\operatorname{div} u| + |\operatorname{curl} u| + \|u \cdot n\|).$$

From the above inequalities we deduce (29). □

Now applying Lemma 1 to the solution of (1)–(4) we get

$$(32) \quad \|D^k u\| \leq c_\tau (|\operatorname{div} D^k u| + |\operatorname{curl} D^k u| + \|D^k u \cdot n\|_{\partial\Omega} + |\Pi D^k u|).$$

We establish formal identities for  $\operatorname{div} D^k u$ ,  $\operatorname{curl} D^k u$  (respectively the normal trace  $n \cdot D^k u$  on the boundary  $\partial\Omega$ ), for  $k \in \mathbb{N}^*$ , as combinations of the functionals

$$(33) \quad f(\theta)[u] := \nabla D^{\alpha_1} u \cdot \dots \cdot \nabla D^{\alpha_s} u,$$

$$(34) \quad \text{respectively } h(\theta)[u] := \nabla^s \rho \{D^{\alpha_1} u, \dots, D^{\alpha_s} u\},$$

with

$$\theta := (s, \alpha),$$

where  $s \in \mathbb{N}^*$  and  $\alpha := (\alpha_1, \dots, \alpha_s) \in \mathbb{N}^s$ . Furthermore, these combinations will only involve indices  $(s, \alpha)$  belonging to

$$(35) \quad \mathcal{A}_k := \{\theta = (s, \alpha) / 2 \leq s \leq k + 1 \text{ and } \alpha := (\alpha_1, \dots, \alpha_s) \in \mathbb{N}^s / |\alpha| = k + 1 - s\}.$$

Here the notation  $|\alpha|$  stands for  $|\alpha| := \alpha_1 + \dots + \alpha_s$ .

We will need to estimate the coefficients of these combinations. To that purpose, we introduce the following notations: for  $\alpha := (\alpha_1, \dots, \alpha_s) \in \mathbb{N}^s$  we will set  $\alpha! := \alpha_1! \dots \alpha_s!$ . We will denote by  $\text{tr}\{A\}$  the trace of  $A \in \mathcal{M}_3(\mathbb{R})$  and by  $\text{as}\{A\} := A - A^*$  the antisymmetric part of  $A \in \mathcal{M}_3(\mathbb{R})$ . In the sequel, we use the convention that the curl is a square matrix rather than a vector.

The precise statement is the following (compare to [12, Proposition 3.1]).

PROPOSITION 2. – For  $k \in \mathbb{N}^*$ , we have in  $\Omega$

$$(36) \quad \text{div } D^k u = \text{tr} \{F^k[u]\} \text{ where } F^k[u] := \sum_{\theta \in \mathcal{A}_k} c_k^1(\theta) f(\theta)[u],$$

$$(37) \quad \text{curl } D^k u = \text{as} \{G^k[u]\} \text{ where } G^k[u] := \sum_{\theta \in \mathcal{A}_k} c_k^2(\theta) f(\theta)[u],$$

where, for  $i = 1, 2$ , the  $c_k^i(\theta)$  are integers satisfying

$$(38) \quad |c_k^i(\theta)| \leq \frac{k!}{\alpha!},$$

and on the boundary  $\partial\Omega$ :

$$(39) \quad n \cdot D^k u = H^k[u] \text{ where } H^k[u] := \sum_{\theta \in \mathcal{A}_k} c_k^3(\theta) h(\theta)[u],$$

where the  $c_k^3(\theta)$  are negative integers satisfying

$$(40) \quad |c_k^3(\theta)| \leq \frac{k!}{\alpha!(s-1)!}.$$

Proposition 2 is a particular case of a more general statement, namely Proposition 6, which will be stated in Section 4 and proved in Section 6.

Now thanks to Proposition 2, (7), the fact that the sequence  $(M_s)_{s \geq 0}$  is increasing and the induction hypothesis (see (28)), we have

$$(41) \quad \begin{aligned} |F^k[u]| &\leq \sum_{(s, \alpha) \in \mathcal{A}_k} \frac{k!}{\alpha!} \prod_{i=1}^s \frac{\alpha_i! M_{\alpha_i} L^{\alpha_i}}{(\alpha_i + 1)^2} \|u\|^{\alpha_i + 1} \\ &\leq k! M_k L^k \|u\|^{k+1} \sum_{s=2}^{k+1} L^{1-s} \sum_{\alpha / |\alpha| = k+1-s} \prod_{i=1}^s \frac{1}{(1 + \alpha_i)^2}. \end{aligned}$$

We now use [6, Lemma 7.3.3], which we recall for the reader's convenience.

LEMMA 2. – For any couple of positive integers  $(s, m)$  we have

$$(42) \quad \sum_{\substack{\alpha \in \mathbb{N}^s \\ |\alpha| = m}} \Upsilon(s, \alpha) \leq \frac{20^s}{(m + 1)^2}, \text{ where } \Upsilon(s, \alpha) := \prod_{i=1}^s \frac{1}{(1 + \alpha_i)^2}.$$

We deduce from (41) and from the above lemma

$$(43) \quad |F^k[u]| \leq \frac{k!M_kL^k}{(k+1)^2} \|u\|^{k+1} \sum_{s=2}^{k+1} L^{1-s} 20^s \frac{(k+1)^2}{(k-s+2)^2}.$$

We have the exact same bound on  $|G^k[u]|$  using (37). For what concerns  $H^k[u]$ , by using (6), (7), (25) and (39) we obtain

$$(44) \quad \begin{aligned} \|H^k[u]\|_{\partial\Omega} &\leq \sum_{s=2}^{k+1} \sum_{\alpha/|\alpha|=k+1-s} \frac{k!}{\alpha!(s-1)!} s!M_s c_\rho^s \prod_{i=1}^s \frac{\alpha_i!M_{\alpha_i}L^{\alpha_i}}{(\alpha_i+1)^2} \|u\|^{\alpha_i+1} \\ &\leq \frac{k!M_kL^k}{(k+1)^2} \|u\|^{k+1} \sum_{s=2}^{k+1} sL^{1-s} (c_\rho C_d)^s 20^s \frac{(k+1)^2}{(k-s+2)^2}. \end{aligned}$$

Concerning the pressure it is possible to get by induction from (1) the following identities, due to Kato, see [12, Proposition 3.5].

PROPOSITION 3. – For  $k \geq 1$ , we have in the domain  $\Omega$

$$(45) \quad D^k u + \nabla D^{k-1} p = K^k[u]$$

where  $K^1[u] = 0$  and for  $k \geq 2$ ,

$$K^k[u] = - \sum_{r=1}^{k-1} \binom{k-1}{r} \nabla D^{r-1} u \cdot D^{k-r} u.$$

Now using Proposition 3 we have

$$\Pi(D^k u) = \Pi(K^k[u])$$

and, together with Proposition 2,

$$\begin{aligned} |K^k[u]| &\leq \sum_{r=1}^{k-1} \frac{(k-1)!}{r!(k-r-1)!} \cdot \frac{(r-1)!}{r^2} \cdot \frac{(k-r)!}{(k-r+1)^2} \cdot M_{r-1} M_{k-r} L^{k-1} \|u\|^{k+1} \\ &\leq \frac{k!M_kL^k}{(k+1)^2} \|u\|^{k+1} L^{-1} \sum_{r=1}^{k-1} \frac{k-r}{kr} \left( \frac{k+1}{r(k-r+1)} \right)^2. \end{aligned}$$

Taking

$$(46) \quad C_\Omega := \left( \sum_{i=1}^g |\Gamma_i|^2 \right)^{1/2},$$

where  $|\Gamma_i|$  is the length of  $\Gamma_i$ , we deduce that

$$|\Pi(K^k[u])|_{\mathbb{R}^g} \leq C_\Omega \frac{k!M_kL^k}{(k+1)^2} \|u\|^{k+1} L^{-1} \sum_{r=1}^{k-1} \frac{k-r}{kr} \left( \frac{k+1}{r(k-r+1)} \right)^2.$$

Plugging the previous bounds into inequality (32), using (36)-(37)-(39) and (45), and thanks to (27) we get

$$(47) \quad \|D^k u\| \leq c_r \gamma(L) \frac{k!M_kL^k}{(k+1)^2} \|u\|^{k+1} \leq \frac{1}{3} \frac{k!M_kL^k}{(k+1)^2} \|u\|^{k+1}.$$

Finally going back to (45) to estimate the pressure we get (28) at rank  $k$  and Theorem 3 is proved.

## 2.2. Proof of Corollary 1

Let us denote by  $\Phi[u_0]$  the flow associated to an initial velocity  $u_0 \in C_{\sigma, \bar{R}}^{\lambda+1, r}(\Omega)$ . We consider  $\bar{R}$  such that

$$\sup_{t \in (-T, T)} \|u(t)\|_{C^{\lambda+1, r}} \leq \bar{R}.$$

By the time-invariance of the equation, it is sufficient to prove that there exists  $T_a > 0$  depending on  $\bar{R}$  and  $\Omega$  only, such that  $u_0 \in C_{\sigma, \bar{R}}^{\lambda+1, r}(\Omega) \mapsto \Phi[u_0] \in C^\omega((-T_a, T_a); C^{\lambda+1, r}(\Omega))$  is  $C^\infty$ .

According to Theorem 3,  $\Phi[u_0] \in C^\omega((-T, T); C^{\lambda+1, r}(\Omega))$ , so there holds for  $(t, x) \in (-T, T) \times \Omega$ ,

$$(48) \quad \Phi[u_0](t, x) = \sum_{k \geq 0} \Phi_k[u_0](t, x),$$

where

$$\Phi_k[u_0](t, x) = \frac{t^k}{k!} (\partial_t^k \Phi)[u_0](0, x) = \begin{cases} x, & \text{if } k = 0, \\ \frac{t^k}{k!} (D^{k-1}u)(0, x), & \text{if } k \geq 1. \end{cases}$$

Proceeding by iteration as in Section 2.1, we obtain that for any  $k \geq 1$ , the operator  $u_0 \in C^{\lambda+1, r}(\Omega) \mapsto (D^{k-1}u)(0, \cdot) \in C^{\lambda+1, r}(\Omega)$  is the restriction to the diagonal of a  $k$ -linear continuous operator from  $C^{\lambda+1, r}(\Omega)^k$  to  $C^{\lambda+1, r}(\Omega)$ , with the estimate

$$\|(D^k u)|_{t=0}\| \leq \frac{k! L^k}{(k+1)^2} \|u_0\|^{k+1}.$$

Therefore, for any  $k \geq 0$ , the mapping  $u_0 \in C_{\sigma}^{\lambda+1, r}(\Omega) \mapsto \Phi_k[u_0] \in C^\omega(\mathbb{R}; C^{\lambda+1, r}(\Omega))$  is  $C^\infty$  and there exists  $T_a > 0$  depending only on  $\Omega$  and  $\bar{R}$  such that the series

$$\sum_{k \geq 0} \|\Phi_k[u_0]\|_{L^\infty(B_C(0, T_a), C^{\lambda+1, r}(\Omega))}$$

converges. Since the  $l$ -th order derivatives with respect to  $u_0$  of  $\Phi_k[u_0]$  can be bounded as above with an extra multiplicative constant  $k^l$ , the series

$$\sum_{k \geq 0} \|D^l \Phi_k[u_0, \dots, u_0, l]\|_{L^\infty(B_C(0, T_a), C^{\lambda+1, r}(\Omega))}$$

also converge. We obtain that  $u_0 \in C_{\sigma, \bar{R}}^{\lambda+1, r}(\Omega) \mapsto \Phi[u_0] \in C^\omega((-T_a, T_a); C^{\lambda+1, r}(\Omega))$  is  $C^\infty$ . Repeating the same process on a finite number of small time intervals yields the result.

### 3. Preliminaries to the proof of Theorem 5

Before entering the core of the proof, let us explain its general strategy as a motivation for the next sections. In what follows,  $T > 0$  is chosen suitably small so that the distance from  $\mathcal{J}(t)$  to  $\partial\Omega$  is bounded from below by a positive real number  $\underline{d}$  and so that we have a uniform constant for the div-curl elliptic estimate on  $\Omega \setminus \mathcal{J}(t)$  for  $t \in (-T, T)$ , see Lemma 6 below.

As in the proof of Theorem 3 we introduce  $\rho_\Omega$  as a function defined on a neighborhood of  $\partial\Omega$  as the signed distance to  $\partial\Omega$ , negative inside  $\Omega$ . Since here the boundary  $\partial\Omega$  is analytic, there exists  $c_\rho > 1$  such that for all  $s \in \mathbb{N}$ ,

$$(49) \quad \|\nabla^s \rho_\Omega\| \leq c_{\rho_\Omega}^s s!.$$

The norm in (49) is the  $C^{\lambda+1,r}$  norm in the above neighborhood. We also introduce an analytic function  $\rho_B(t, x)$  defined on a neighborhood of the body's boundary  $\partial\mathcal{J}(t)$  as the signed distance function to  $\partial\mathcal{J}(t)$  (let us say, positive inside  $\mathcal{J}(t)$ ), so that the inward unit normal to the body boundary is  $n(t, x) := \nabla \rho_B(t, x)$  (defined in a neighborhood of  $\partial\mathcal{J}(t)$ ). We denote by  $\rho_0$  the initial value of  $\rho_B$  which is therefore an analytic function  $\rho_0(x)$  defined on a neighborhood of the body's boundary  $\partial\mathcal{J}_0$  at initial time and satisfying  $\rho_0(x) = \text{dist}(x, \partial\mathcal{J}_0)$ . Note that the norms  $\|\nabla^s \rho_B\|$  are independent of  $t$  (see (65)-(66) below). The analytic estimates on  $\partial\mathcal{J}$  read

$$(50) \quad \|\nabla_x^s \rho_B\| \leq c_{\rho_B}^s s!.$$

The norm considered in (50) is again the  $C^{\lambda+1,r}$  norm in the neighborhood where  $\rho_B$  is defined. In the sequel we will omit to write the index  $x$  in the derivation of  $\rho_B$ .

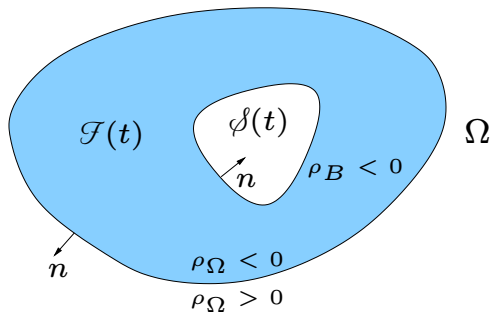


FIGURE 1. The domain.

As in Section 2, we consider solutions  $(\ell, r, u)$  which are smooth. For this, as previously, we proceed by regularization of the initial data  $u_0$  and prove estimates which do not depend on the regularization parameter. Let us briefly explain how we can take the non homogeneous boundary value  $u_0 \cdot n = [\ell_0 + r \wedge (x - x_0)] \cdot n$  on the boundary of the solid. We lift the non homogeneous boundary value  $u_0 \cdot n$  on the solid boundary (and 0 on  $\partial\Omega$ ) by a harmonic extension, which one can describe as

$$\nabla \Phi \cdot \begin{bmatrix} \ell_0 \\ r_0 \end{bmatrix},$$



with the notations (53)-(57) below. This part is smooth, and one can regularize the remaining part of  $u_0$  as in Section 2.1. Note finally that the passage to the limit requires Proposition 1.

As for Theorem 3, the goal is to prove by induction an estimate on the  $k$ -th material derivative of the fluid and the body velocities. Precisely, what we want to prove is the following inequality: there exists  $L > 0$  such that for all  $k \in \mathbb{N}$ ,

$$(51) \quad \|D^k u\| + \|\ell^{(k)}\| + \|r^{(k)}\| \leq \mathcal{V}_k, \text{ with } \mathcal{V}_k := \frac{k!L^k}{(k+1)^2} \mathcal{V}^{k+1}, \text{ where } \mathcal{V} := \|u\| + \|\ell\| + \|r\|.$$

The norm on vectors (here  $\ell$ ,  $r$  and their derivatives) of  $\mathbb{R}^3$  is the usual Euclidean one. We will also use the notation  $\|\cdot\|$  for the associated operator norm. Here the spaces and norms are the following:

$$\begin{aligned} X(t) &:= C^{\lambda,r}(\mathcal{F}(t)), \|\cdot\| := \|\cdot\|_{X(t)}, \quad \widetilde{X}(t) := C^{\lambda,r}(\partial\mathcal{J}(t)), \|\cdot\|_{\partial\mathcal{J}(t)} := \|\cdot\|_{\widetilde{X}(t)}, \\ X_{\partial\Omega} &:= C^{\lambda,r}(\partial\Omega), \|\cdot\|_{\partial\Omega} := \|\cdot\|_{X_{\partial\Omega}}, \\ Y(t) &:= C^{\lambda+1,r}(\mathcal{F}(t)), \|\cdot\| := \|\cdot\|_{Y(t)}, \quad \widetilde{Y}(t) := C^{\lambda+1,r}(\partial\mathcal{J}(t)), \|\cdot\|_{\partial\mathcal{J}(t)} := \|\cdot\|_{\widetilde{Y}(t)}, \\ Y_{\partial\Omega} &:= C^{\lambda+1,r}(\partial\Omega), \|\cdot\|_{\partial\Omega} := \|\cdot\|_{Y_{\partial\Omega}}. \end{aligned}$$

The inequality (51) is true for  $k = 0$ . Now in order to propagate the induction hypothesis we will proceed in two parts looking first at the estimates of the pressure and then deducing estimates for the velocities of the solid and of the fluid. These two steps are summed up into two propositions below. Their proof is based on estimates of the pressure. The idea is to decompose the pressure into pieces which we estimate separately.

LEMMA 3. – Equation (8) can be written as

$$(52) \quad Du = -\nabla\mu + \nabla \left( \Phi \cdot \begin{bmatrix} \ell \\ r \end{bmatrix} \right),$$

with  $\Phi := (\Phi_i)_{i=1\dots 6}$ , where the functions  $\Phi_i$  and  $\mu$  are the solutions of the following problems:

$$(53) \quad -\Delta\Phi_i = 0 \quad \text{for } x \in \mathcal{F}(t),$$

$$(54) \quad \frac{\partial\Phi_i}{\partial n} = 0 \quad \text{for } x \in \partial\Omega,$$

$$(55) \quad \frac{\partial\Phi_i}{\partial n} = K_i \quad \text{for } x \in \partial\mathcal{J}(t),$$

$$(56) \quad \int_{\mathcal{F}(t)} \Phi_i \, dx = 0,$$

where

$$(57) \quad K_i := \begin{cases} n_i & \text{if } i = 1, 2, 3, \\ [(x - x_B) \wedge n]_{i-3} & \text{if } i = 4, 5, 6, \end{cases}$$

and

$$(58) \quad -\Delta\mu = \text{tr}\{F^1[u]\} = \text{tr}\{\nabla u \cdot \nabla u\} \quad \text{for } x \in \mathcal{F}(t),$$

$$(59) \quad \frac{\partial\mu}{\partial n} = -H^1[u] = -\nabla^2 \rho_\Omega(u, u) \quad \text{for } x \in \partial\Omega,$$

$$(60) \quad \frac{\partial\mu}{\partial n} = \sigma, \quad \text{for } x \in \partial\mathcal{J}(t),$$

$$(61) \quad \int_{\mathcal{F}(t)} \mu \, dx = 0,$$

where  $F^1[u]$  and  $H^1[u]$  were introduced in Proposition 2, where  $v = v(t, x)$  is given by (16) and where

$$(62) \quad \sigma := \nabla^2 \rho_B \{u - v, u - v\} - n \cdot (r \wedge (2u - v - \ell)).$$

*Proof.* – Using (8) we have the following equations:

$$(63) \quad \begin{aligned} -\Delta p &= \text{tr}\{F^1[u]\} \quad \text{for } x \in \mathcal{F}(t), \\ \frac{\partial p}{\partial n} &= -H^1[u] \quad \text{for } x \in \partial\Omega, \\ \frac{\partial p}{\partial n} &= -n \cdot Du \quad \text{for } x \in \partial\mathcal{J}(t), \end{aligned}$$

which determine uniquely  $p$ , with the extra condition:

$$(64) \quad \int_{\mathcal{F}(t)} p \, dx = 0.$$

Let us now deal with the boundary condition (63). Since the motion of the body is rigid there holds

$$(65) \quad \rho_B(t, x) = \rho_0(\hat{\mathcal{X}}(t, x)),$$

where

$$(66) \quad \hat{\mathcal{X}}(t, x) := x_0 + Q(t)^*(x - x_B(t)).$$

Hence by spatial derivation we infer that for any  $(u^1, u^2)$  in  $(\mathbb{R}^3)^2$ ,

$$(67) \quad \begin{aligned} n(t, x) \cdot u^1 &= \nabla \rho_0(\hat{\mathcal{X}}(t, x)) \cdot Q(t)^* u^1, \\ \nabla^2 \rho_B(t, x) \{u^1, u^2\} &= \nabla^2 \rho_0(\hat{\mathcal{X}}(t, x)) \{Q(t)^* u^1, Q(t)^* u^2\}. \end{aligned}$$

Due to (16), (17) and (66), we have

$$(68) \quad \frac{\partial}{\partial t} \hat{\mathcal{X}}(t, x) := -Q(t)^* v(t, x).$$

Then applying a time derivative to (67) and using (17) and (68), we get for any  $u^1$  in  $\mathbb{R}^3$ ,

$$D(n(t, x) \cdot u^1) = -n(t, x) \cdot (r \wedge u^1) + \nabla^2 \rho_B(t, x) \{u - v, u^1\}.$$

We now use Leibniz's formula to get that for any smooth vector field  $\psi$

$$(69) \quad n \cdot D\psi = D(n \cdot \psi) + n \cdot (r \wedge \psi) - \nabla^2 \rho_B \{u - v, \psi\}.$$

Next we apply this to  $\psi = u - v$  and we use the identity  $Dv = \ell' + r' \wedge (x - x_B) + r \wedge (u - \ell)$  (obtained from (16)) and the boundary condition (13) to obtain

$$(70) \quad \frac{\partial p}{\partial n} = \sigma - K \cdot \begin{bmatrix} \ell \\ r \end{bmatrix}' \quad \text{for } x \in \partial\phi(t),$$

where  $K := (K_i)_{i=1\dots 6}$ . We therefore obtain that the pressure can be decomposed into  $p = \mu - \Phi \cdot \begin{bmatrix} \ell \\ r \end{bmatrix}'$ . Let us stress that the functions  $\Phi_i$  and  $\mu$  are well-defined because the compatibility conditions are fulfilled; their uniqueness are granted from (56) and (61).  $\square$

LEMMA 4. – *The equations (10)-(11) can be written as*

$$(71) \quad \mathcal{M} \begin{bmatrix} \ell \\ r \end{bmatrix}' = \begin{bmatrix} 0 \\ \mathcal{J}r \wedge r \end{bmatrix} + \Xi,$$

where

$$(72) \quad \Xi(t) := \left[ \int_{\mathcal{F}(t)} \nabla \mu \cdot \nabla \Phi_a dx \right]_{a \in \{1, \dots, 6\}}, \quad \mathcal{M}(t) := \mathcal{M}_1(t) + \mathcal{M}_2(t),$$

$$\mathcal{M}_1(t) := \begin{bmatrix} m \text{Id}_3 & 0 \\ 0 & \mathcal{J} \end{bmatrix}, \quad \mathcal{M}_2(t) := \left[ \int_{\mathcal{F}(t)} \nabla \Phi_a \cdot \nabla \Phi_b dx \right]_{a, b \in \{1, \dots, 6\}},$$

and  $\mathcal{J}$  was defined in (22). Furthermore the matrix  $\mathcal{M}$  is symmetric and positive definite.

*Proof.* – It is sufficient to use the previous lemma and to notice that for  $i \in \{1, \dots, 6\}$ , for any  $t \in (-T, T)$ , for any function  $f \in C^1(\overline{\mathcal{F}(t)}; \mathbb{R})$ ,

$$\int_{\partial\phi(t)} K_i f d\Gamma = \int_{\mathcal{F}(t)} \nabla \Phi_i \cdot \nabla f dx. \quad \square$$

REMARK 15. – The matrix  $\mathcal{M}$  is referred to as the “virtual inertia tensor”, it incorporates the “added inertia tensor”  $\mathcal{M}_2$  which, loosely speaking, measures how much the surrounding fluid resists the acceleration as the body moves through it. This effect was probably first identified by du Buat in 1786, and the efficient way of evaluating this effect through the functions  $\Phi_a$  dates back to Kirchhoff.

We will first prove the following (see Subsection 5.2).

PROPOSITION 4. – *The functions  $\Phi_i$  ( $i = 1, \dots, 6$ ) and  $\mu$  satisfy the following assertions.*

– *There exists a positive constant  $C_0 = C_0(\Omega, \phi_0, \underline{d})$  such that*

$$\sum_{1 \leq i \leq 6} \|\nabla \Phi_i\| \leq C_0.$$

– There exists  $\gamma_2$  a positive decreasing function with  $\lim_{L \rightarrow +\infty} \gamma_2(L) = 0$  such that, if for all  $j \leq k$ ,

$$(73) \quad \|D^j u\| + \|\ell^{(j)}\| + \|r^{(j)}\| \leq \mathcal{V}_j,$$

then for all  $1 \leq j \leq k + 1$ ,

$$(74) \quad \sum_{1 \leq i \leq 6} \|D^j \nabla \Phi_i\| \leq \gamma_2(L) \frac{\mathcal{V}_j}{\mathcal{V}'}.$$

– There exists a positive constant  $C_0 = C_0(\Omega, \phi_0, \underline{d})$  such that

$$(75) \quad \|\nabla \mu\| \leq C_0 \mathcal{V}^2.$$

– There exists  $\gamma_2$  a positive decreasing function with  $\lim_{L \rightarrow +\infty} \gamma_2(L) = 0$  such that, if for all  $j \leq k$ , (73) holds true then for all  $1 \leq j \leq k$ ,

$$(76) \quad \|D^j \nabla \mu\| \leq \gamma_2(L) \mathcal{V}' \mathcal{V}_j.$$

The second proposition allows to propagate the induction hypothesis.

**PROPOSITION 5.** – There exists a positive decreasing function  $\gamma_3$  with  $\lim_{L \rightarrow +\infty} \gamma_3(L) = 0$  such that for any  $k \in \mathbb{N}^*$ , if for all  $j \leq k$ , (73) holds, then

$$(77) \quad \|\ell^{(k+1)}\| + \|r^{(k+1)}\| + \|D^{k+1} u\| \leq \mathcal{V}_{k+1} \gamma_3(L).$$

The proof of Proposition 5 is given in Subsection 5.3. It consists in differentiating  $k$  times relations (52) and (71) and relies on Proposition 4. Once Proposition 5 established, Theorem 5 is deduced by induction in a straightforward manner.

#### 4. Formal identities

In this section, we give several formal identities used to prove Theorem 5. Some of them generalize Proposition 2 and Proposition 3. Their proofs are given in Section 6. We first recall the following commutator rules to exchange  $D$  and the other differentiations, which are valid for  $\psi$  a scalar/vector field defined in the fluid domain:

$$(78) \quad D(\psi_1 \psi_2) = (D\psi_1)\psi_2 + \psi_1(D\psi_2),$$

$$(79) \quad \nabla(D\psi) - D(\nabla\psi) = (\nabla u) \cdot (\nabla\psi),$$

$$(80) \quad \operatorname{div} D\psi - D \operatorname{div} \psi = \operatorname{tr} \{(\nabla u) \cdot (\nabla\psi)\},$$

$$(81) \quad \operatorname{curl} D\psi - D \operatorname{curl} \psi = \operatorname{as} \{(\nabla u) \cdot (\nabla\psi)\}.$$

#### 4.1. Formal identities in the fluid and on the fixed boundary

Let us be given a vector field  $\psi$  defined in the fluid domain, smooth up to the boundary. We will establish formal identities for  $\operatorname{div} D^k \psi$ , for  $\operatorname{curl} D^k \psi$ , respectively for the normal trace  $n \cdot D^k \psi$  on the boundary  $\partial\Omega$ , of the iterated material derivatives  $(D^k \psi)_{k \in \mathbb{N}^*}$  as combinations of the functionals

$$(82) \quad f(\theta)[u, \psi] := \nabla D^{\alpha_1} u \cdots \nabla D^{\alpha_{s-1}} u \cdot \nabla D^{\alpha_s} \psi,$$

$$(83) \quad \text{respectively } h(\theta)[u, \psi] := \nabla^s \rho_\Omega \{D^{\alpha_1} u, \dots, D^{\alpha_{s-1}} u, D^{\alpha_s} \psi\},$$

with  $\theta := (s, \alpha)$ , where  $s \in \mathbb{N}^*$  and  $\alpha := (\alpha_1, \dots, \alpha_s) \in \mathbb{N}^s$ . Furthermore, these combinations only involve indices  $(s, \alpha)$  belonging to the set  $\mathcal{A}_k$  defined in (35). The precise statement is the following.

**PROPOSITION 6.** – For  $k \in \mathbb{N}^*$ , we have in  $\mathcal{F}(t)$

$$(84) \quad \operatorname{div} D^k \psi = D^k (\operatorname{div} \psi) + \operatorname{tr} \{F^k[u, \psi]\} \text{ where } F^k[u, \psi] := \sum_{\theta \in \mathcal{A}_k} c_k^1(\theta) f(\theta)[u, \psi],$$

$$(85) \quad \operatorname{curl} D^k \psi = D^k (\operatorname{curl} \psi) + \operatorname{as} \{G^k[u, \psi]\} \text{ where } G^k[u, \psi] := \sum_{\theta \in \mathcal{A}_k} c_k^2(\theta) f(\theta)[u, \psi],$$

where, for  $i = 1, 2$ , the  $c_k^i(\theta)$  are integers satisfying

$$(86) \quad |c_k^i(\theta)| \leq \frac{k!}{\alpha!},$$

with  $\theta := (s, \alpha)$ , and on the boundary  $\partial\Omega$

$$(87) \quad n \cdot D^k \psi = D^k (n \cdot \psi) + H^k[u, \psi] \text{ where } H^k[u, \psi] := \sum_{\theta \in \mathcal{A}_k} c_k^3(\theta) h(\theta)[u, \psi],$$

where the  $c_k^3(\theta)$  are negative integers satisfying

$$(88) \quad |c_k^3(\theta)| \leq \frac{k!}{\alpha!(s-1)!}.$$

The above proposition will be proved in Section 6. It generalizes Proposition 2, where  $F^k[u] = F^k[u, u]$  (and similarly for the other functionals).

We can also establish identities for the gradient  $\nabla D^k \psi$  for a smooth scalar-valued function  $\psi$ :

**PROPOSITION 7.** – For  $k \geq 1$ , we have in the domain  $\mathcal{F}(t)$

$$(89) \quad D^k \nabla \psi = \nabla D^k \psi + K^k[u, \psi],$$

where for  $k \geq 1$ ,

$$K^k[u, \psi] = - \sum_{r=1}^k \binom{k}{r} \nabla D^{r-1} u \cdot D^{k-r} \nabla \psi.$$

The proof of this proposition is completely identical to the proof of [12, Prop. 3.5] and is therefore omitted.

## 4.2. Formal identities on the body boundary

The aim of this section is to present some formal identities for normal traces on the boundary  $\partial\mathcal{J}(t)$  of the rigid body of iterated material derivatives  $D^k\psi$ , and for iterated material derivatives of the functions  $K_i$  defined in (57). With respect to the previous section the analysis is complicated by the dynamic of the body.

To a vector  $r \in \mathbb{R}^3$  we associate the operator  $\mathcal{R}(r) := r \wedge \cdot$ . To any  $\beta \in \mathbb{N}^s$  and  $r \in C^{|\beta|}((-T, T); \mathbb{R}^3)$  we define the functional  $\mathcal{R}_\beta[r]$  which associates to the time-dependent function  $r$  the rotation operator

$$(90) \quad \mathcal{R}_\beta[r] := \mathcal{R}(r^{(\beta_1)}) \circ \dots \circ \mathcal{R}(r^{(\beta_s)}).$$

For any  $s \in \mathbb{N}^*$ , we will use some indices  $\mathbf{s}' := (s'_1, \dots, s'_s)$  in  $\mathbb{N}^s$ . Then  $\mathbf{s}'$  will denote  $s' := |\mathbf{s}'| = s'_1 + \dots + s'_s$ ,  $(\underline{\alpha}_1, \dots, \underline{\alpha}_s)$  will be in  $\mathbb{N}^{s'_1} \times \dots \times \mathbb{N}^{s'_s}$  and  $\alpha := (\underline{\alpha}_1, \dots, \underline{\alpha}_s, \alpha_{s'+1}, \dots, \alpha_{s'+s})$  will be an element of  $\mathbb{N}^{s'+s}$ . The bricks of the formal identity will be the functionals, defined for smooth vector fields  $\varphi$  and  $\psi$  and a multi-index  $\zeta := (s, \mathbf{s}', \alpha) \in \mathbb{N}^* \times \mathbb{N}^s \times \mathbb{N}^{s'+s}$ :

$$(91) \quad h(\zeta)[r, \varphi, \psi] := \nabla^s \rho_B(t, x) \{ \mathcal{R}_{\underline{\alpha}_1}[r] D^{\alpha_{s'+1}} \varphi, \dots, \mathcal{R}_{\underline{\alpha}_{s-1}}[r] D^{\alpha_{s'+s-1}} \varphi, \mathcal{R}_{\underline{\alpha}_s}[r] D^{\alpha_{s'+s}} \psi \}.$$

In (91) the term  $\mathcal{R}_{\underline{\alpha}_i}[r]$  should be omitted when  $s'_i := 0$ . We introduce the following set

$$(92) \quad \mathcal{B}_k := \{ \zeta = (s, \mathbf{s}', \alpha) / 2 \leq s + s' \leq k + 1 \text{ and } |\alpha| + s + s' = k + 1 \}.$$

We have the following formal identity. Here  $\psi$  is a smooth vector field.

PROPOSITION 8. – *For  $k \in \mathbb{N}^*$ , there holds on the boundary  $\partial\mathcal{J}(t)$*

$$(93) \quad n \cdot D^k \psi = D^k (n \cdot \psi) + H^k[r, u - v, \psi] \text{ where } H^k[r, u - v, \psi] := \sum_{\zeta \in \mathcal{B}_k} d_k^1(\zeta) h(\zeta)[r, u - v, \psi],$$

$$(94) \quad D^k K_i = \widetilde{H}^k[r, u - v, \sigma_i] \text{ where } \widetilde{H}^k[r, u - v, \sigma_i] := \sum_{\zeta \in \mathcal{B}_k} d_k^2(\zeta) h(\zeta)[r, u - v, \sigma_i],$$

where the  $K_i$  are defined in (57),

$$(95) \quad \sigma_i := e_i \text{ if } i = 1, 2, 3, \text{ and } \sigma_i := e_{i-3} \wedge (x - x_B) \text{ if } i = 4, 5, 6,$$

and where the  $d_k^j(\zeta)$ ,  $j = 1, 2$ , are integers satisfying

$$(96) \quad |d_k^j(\zeta)| \leq \frac{3^{s+s'} k!}{\alpha!(s-1)!},$$

for any  $\zeta := (s, \mathbf{s}', \alpha) \in \mathcal{B}_k$ .

### 4.3. Estimates on the body rotation

We state a formal identity for the iterated time derivatives of the rotation matrix.

PROPOSITION 9. – For  $k \in \mathbb{N}^*$ , we have

$$(97) \quad Q^{(k)} = \sum_{s=1}^k \sum_{\alpha \in \mathcal{A}_{k-1,s}} c_k(\alpha) \mathcal{R}_\alpha[r]Q,$$

where

$$\mathcal{A}_{k,s} := \{\alpha \in \mathbb{N}^s / |\alpha| = k + 1 - s\},$$

and where the  $c_k(\alpha)$  are integers satisfying

$$(98) \quad |c_k(\alpha)| \leq \frac{(k-1)!}{\alpha!(s-1)!}.$$

## 5. Proofs of the results of Section 3

This section is devoted to the proofs of the main steps of the proof of Theorem 5: Proposition 4 and Proposition 5. They are proved by using the formal estimates of the above section.

### 5.1. A regularity lemma

To establish Propositions 4 and 5, we use as in the proof of Theorem 3 a regularity lemma, but here we need to take the modification of the geometry into account. Thus, we modify the regularity lemma (Lemma 1 in the proof of Theorem 3).

First, we establish the following.

LEMMA 5. – Let  $\mathcal{G}$  be a regular closed subset of  $\Omega$ . Let  $\Gamma_i$  ( $i = 1, \dots, g$ ) be a family of smooth oriented loops in  $\overline{\Omega} \setminus \mathcal{G}$  which gives a basis of the first singular homology space of  $\overline{\Omega} \setminus \mathcal{G}$  with real coefficients. There exist two constants  $c, C > 0$  such that for any  $C^{\lambda+2,r}$ -diffeomorphism  $\eta : \Omega \setminus \mathcal{G} \rightarrow \mathcal{G} := \eta(\Omega \setminus \mathcal{G}) \subset \mathbb{R}^3$  satisfying

$$(99) \quad \|\eta - \text{Id}\|_{C^{\lambda+2,r}(\Omega \setminus \mathcal{G})} < c,$$

one has the following estimate. Let  $u \in C^{\lambda,r}(\mathcal{G})$  such that

$$\text{div } u \in C^{\lambda,r}(\mathcal{G}), \quad \text{curl } u \in C^{\lambda,r}(\mathcal{G}), \quad u \cdot n \in C^{\lambda+1,r}(\partial\mathcal{G}),$$

where  $n$  is the unit outward normal on  $\partial\mathcal{G}$ . Then  $u \in C^{\lambda+1,r}(\mathcal{G})$  and

$$(100) \quad \|u\|_{C^{\lambda+1,r}(\mathcal{G})} \leq C (\|\text{div } u\|_{C^{\lambda,r}(\mathcal{G})} + \|\text{curl } u\|_{C^{\lambda,r}(\mathcal{G})} + \|u \cdot n\|_{C^{\lambda+1,r}(\partial\mathcal{G})} + |\Pi_\eta u|),$$

where  $\Pi_\eta$  is the mapping defined by  $u \mapsto (\oint_{\eta(\Gamma_1)} u \cdot \tau d\sigma, \dots, \oint_{\eta(\Gamma_g)} u \cdot \tau d\sigma)$ .

*Proof.* – We apply the regularity Lemma 1 to  $u \circ \eta$ : there exists a constant  $c_\tau$  depending only on  $\Omega \setminus \mathcal{G}$  and  $\Gamma_i$  ( $1 \leq i \leq g$ ) such that

$$(101) \quad \|u \circ \eta\| \leq c_\tau (|\text{div}(u \circ \eta)| + |\text{curl}(u \circ \eta)| + \|(u \circ \eta) \cdot n\| + |\Pi_{\text{Id}}(u \circ \eta)|_{\mathbb{R}^g}),$$

where  $n$  is the normal on  $\partial\Omega \cup \partial\mathcal{G}$ . Now, using the exponent  $j$  for the  $j$ -th coordinate, we have

$$\partial_i(u \circ \eta) = \sum_j (\partial_j u) \circ \eta \cdot \partial_i \eta^j \quad \text{and} \quad (\partial_i u) \circ \eta = \sum_j (\partial_j u) \circ \eta \cdot \partial_i \text{Id}^j.$$

Moreover, it is clear that for  $\|\eta - \text{Id}\|_{C^{\lambda+2,r}} \leq 1/2$ , one has for some constant  $C > 0$ :

$$(102) \quad C^{-1}|\psi| \leq |\psi \circ \eta| \leq C|\psi| \text{ and } C^{-1}\|\psi\| \leq \|\psi \circ \eta\| \leq C\|\psi\|.$$

It follows that for some constant  $C > 0$  (and  $c \leq 1/2$ ):

$$|\text{div}(u \circ \eta) - (\text{div } u) \circ \eta| + |\text{curl}(u \circ \eta) - (\text{curl } u) \circ \eta| \leq C\|u\|\|\eta - \text{Id}\|.$$

Thus these terms can be absorbed by the left hand side for  $c$  small enough ( $c$  being the constant in (99)). Also, one has

$$(103) \quad |\Pi_\eta(u \circ \eta) - \Pi_{\text{Id}}(u)|_{\mathbb{R}^g} \leq C\|u\|\|\eta - \text{Id}\|,$$

$$(104) \quad \|(u \circ \eta) \cdot n - (u \cdot n_\eta) \circ \eta\|_{C^{\lambda+1,r}(\Omega \setminus \mathcal{J})} \leq C\|u\|\|\eta - \text{Id}\|_{C^{\lambda+2,r}(\Omega \setminus \mathcal{J})},$$

where  $n_\eta$  is the normal on  $\partial\Omega \cup \partial[\eta(\mathcal{J})]$ . Indeed the normal  $n_\eta$  can be obtained by using the differential of  $\eta$  on two tangents of  $\mathcal{J}$ , taking the cross product and normalizing. Consequently the terms in (103)-(104) can be absorbed as well by the left hand side. This gives

$$\|u \circ \eta\| \leq c_\tau (|\text{div}(u) \circ \eta| + |\text{curl}(u) \circ \eta| + \|(u \cdot n_\eta) \circ \eta\| + |\Pi_\eta(u)|_{\mathbb{R}^g}).$$

Using again (102), this concludes the proof of Lemma 5.  $\square$

As a consequence of Lemma 5, the constant in the elliptic estimate for the div-curl system is uniform for all the domains that can be obtained from  $\Omega \setminus \mathcal{J}(0)$  by moving the solid  $\mathcal{J}$  inside  $\Omega$  while keeping a minimal distance from  $\mathcal{J}$  to the boundary. This is given in the following statement.

LEMMA 6. – For  $\varepsilon > 0$ , define

$$(105) \quad D_\varepsilon := \left\{ \tau \in SE(3) / \exists \gamma \in C^0([0, 1], SE(3)) \right. \\ \left. \text{such that } \gamma(0) = \text{Id}, \gamma(1) = \tau, d(\gamma(t)[\mathcal{J}(0)], \partial\Omega) \geq \varepsilon \text{ in } [0, 1] \right\}.$$

Choose the family  $\Gamma_i$  ( $i = 1, \dots, g$ ) giving a homology basis of  $\bar{\Omega} \setminus \mathcal{J}(0)$ , inside  $\partial\Omega \cup \partial\mathcal{J}(0)$ , let us say  $\Gamma_1, \dots, \Gamma_k \subset \partial\Omega$  and  $\Gamma_{k+1}, \dots, \Gamma_g \subset \partial\mathcal{J}(0)$ . Then one can find a constant  $c_\tau > 0$  such that (100) is valid for all  $\mathcal{G} = \Omega \setminus \tau(\mathcal{J}(0))$ , uniformly for  $\tau \in D_\varepsilon$ , where  $\Pi$  is defined by  $u \mapsto \left( \oint_{\Gamma_1} u \cdot \tau d\sigma, \dots, \oint_{\Gamma_k} u \cdot \tau d\sigma, \oint_{\tau(\Gamma_{k+1})} u \cdot \tau d\sigma, \dots, \oint_{\tau(\Gamma_g)} u \cdot \tau d\sigma \right)$ .

REMARK 16. – We also obtain the inequality with a uniform constant when we replace the curves  $\tau(\Gamma_{k+1}), \dots, \tau(\Gamma_g)$  by homotopic curves  $\tilde{\Gamma}_{k+1}, \dots, \tilde{\Gamma}_g$  in  $\partial\tau(\mathcal{J})$ . It is a direct consequence of the fact that the difference of circulations around  $\tau(\Gamma_i)$  and  $\tilde{\Gamma}_i$  is obtained by the flux of  $\text{curl } u$  across the part of  $\mathcal{J}$  between  $\tau(\Gamma_i)$  and  $\tilde{\Gamma}_i$ .

We will need the following.

LEMMA 7. – Let  $\lambda \in \mathbb{N}$ ,  $r \in (0, 1)$ ,  $\Omega$  and  $\mathcal{J} \subset \Omega$  a smooth closed domain be given. Let  $c > 0$ . There exists a neighborhood  $\mathcal{U}$  of  $\text{Id}$  in  $SE(3)$  such that for any  $\tau \in \mathcal{U}$ , there exists  $\eta \in C^\infty(\bar{\Omega}; \mathbb{R}^3)$  a smooth diffeomorphism sending  $\bar{\Omega} \setminus \tau(\mathcal{J})$  into  $\bar{\Omega} \setminus \mathcal{J}$ , such that  $\eta = \text{Id}$  in the neighborhood of  $\partial\Omega$  and  $\eta = \tau$  in the neighborhood of  $\partial\mathcal{J}(0)$ , and satisfying

$$(106) \quad \|\eta - \text{Id}\|_{C^{\lambda+2,r}} < c.$$



*Proof.* – Set  $\underline{d} := d(\mathcal{J}, \partial\Omega)$ , and

$$\mathcal{H}_r := \{x \in \Omega / d(x, \partial\mathcal{J}) < r\}.$$

Fix  $r \in (0, \frac{\underline{d}}{2})$  such that  $\mathcal{H}_r$  is a tubular neighborhood of  $\partial\mathcal{J}$ . This allows (for instance) to define  $\varphi \in C_0^\infty(\mathbb{R}^3, \mathbb{R})$  such that

$$\varphi(x) = 1 \text{ on } \mathcal{H}_{r/3} \text{ and } \varphi(x) = 0 \text{ on } \mathbb{R}^3 \setminus \mathcal{H}_{2r/3}.$$

For  $\kappa > 0$ , we define (considering  $\tau$  as a  $C^1$  function on  $\Omega$ )

$$\mathcal{U} := \left\{ \tau \in SE(3) / \|\tau - \text{Id}\|_{C^1(\bar{\Omega})} < \min\left(\frac{r}{3}, \kappa\right) \right\}.$$

Given  $\tau \in \mathcal{U}$ , let

$$\eta(x) := (1 - \varphi(x))x + \varphi(x)\tau(x).$$

Clearly, for  $\kappa > 0$  small enough,  $\eta$  is a diffeomorphism of  $\mathbb{R}^3$ , and hence a diffeomorphism of  $\Omega$  on its image, satisfying (106). Also,  $\eta$  equals  $\text{Id}$  on  $\mathbb{R}^3 \setminus \mathcal{H}_{2r/3}$  which is a neighborhood of  $\partial\Omega$  and  $\tau$  on  $\mathcal{H}_{r/3}$  which is a neighborhood of  $\partial\mathcal{J}$ . For  $x \in \mathcal{H}_{2r/3} \setminus \mathcal{H}_{r/3}$ , we see that  $\eta(x) \in \Omega \setminus \tau(\mathcal{J})$ , hence  $\eta$  is a diffeomorphism from  $\Omega \setminus \mathcal{J}$  to  $\Omega \setminus \tau(\mathcal{J})$ .  $\square$

*Proof of Lemma 6.* – Since  $\Omega$  is bounded, it is clear that  $D_\varepsilon$  is compact (to prove that it is closed, one can for instance parameterize the curves  $\gamma$  in order that  $|\dot{\gamma}| \leq K$  where  $K$  depends on the geometry only). For each  $\tau \in D_\varepsilon$ , apply Lemma 7 with  $\mathcal{J} = \tau(\mathcal{J}(0))$  and  $c$  such that Lemma 5 applies. A vicinity of  $\tau \in SE(3)$  is composed of  $\{h \circ \tau, h \in \mathcal{U}\}$ . Extract a finite subcover. This gives the claim since any  $\tau \in D_\varepsilon$  can be connected to  $\text{Id}$  through a finite number of these vicinities.  $\square$

## 5.2. Proof of Proposition 4

The functions  $\nabla\Phi_i$  ( $i = 1, \dots, 6$ ) defined by (53)–(55) satisfy

$$(107) \quad \begin{aligned} \operatorname{div} \nabla\Phi_i &= 0 & \text{in } \mathcal{F}(t), & \quad \operatorname{curl} \nabla\Phi_i = 0 & \text{in } \mathcal{F}(t), \\ n \cdot \nabla\Phi_i &= K_i & \text{on } \partial\mathcal{J}(t), & \quad n \cdot \nabla\Phi_i = 0 & \text{on } \partial\Omega. \end{aligned}$$

Then by applying the regularity lemma (Lemma 6), we obtain

$$(108) \quad \|\nabla\Phi_i\| \leq C_0,$$

where  $C_0$  is a positive constant depending only on the geometry.

To prove the second point of the proposition, we proceed by induction. Assume that (74) holds for all indices up to  $j \leq k$ . Let us prove that it holds at the index  $j + 1$ .

By applying  $D^{j+1}$  to (107) and by using Propositions 6, 7, and 8 we obtain that  $D^{j+1}\nabla\Phi_i$  satisfies the following relations

$$(109) \quad \begin{aligned} \operatorname{div} D^{j+1}\nabla\Phi_i &= \operatorname{tr} \{F^{j+1}[u, \nabla\Phi_i]\} & \text{in } \mathcal{F}(t), \\ \operatorname{curl} D^{j+1}\nabla\Phi_i &= \operatorname{as} \{G^{j+1}[u, \nabla\Phi_i]\} & \text{in } \mathcal{F}(t), \end{aligned}$$

$$(110) \quad \begin{aligned} n \cdot D^{j+1}\nabla\Phi_i &= D^{j+1}K_i + H^{j+1}[r, u - v, \nabla\Phi_i] & \text{on } \partial\mathcal{J}(t), \\ n \cdot D^{j+1}\nabla\Phi_i &= H^{j+1}[u, \nabla\Phi_i] & \text{on } \partial\Omega. \end{aligned}$$

Using these relations and Lemma 6, we obtain

$$(111) \quad \|D^{j+1}\nabla\Phi_i\| \leq c_\tau (|F^{j+1}[u, \nabla\Phi_i]| + |G^{j+1}[u, \nabla\Phi_i]| + \|H^{j+1}[u, \nabla\Phi_i]\|_{\partial\Omega} \\ + \|D^{j+1}K_i\|_{\partial\mathcal{D}(t)} + \|H^{j+1}[r, u - v, \nabla\Phi_i]\|_{\partial\mathcal{D}(t)} + |K^{j+1}[u, \Phi_i]|).$$

Then we can proceed as in the proof of Theorem 3 and by using that (73) and (74) hold for all indices up to  $j \leq k$ , we deduce

$$(112) \quad |F^{j+1}[u, \nabla\Phi_i]| + |G^{j+1}[u, \nabla\Phi_i]| + \|H^{j+1}[u, \nabla\Phi_i]\|_{\partial\mathcal{D}(t)} + |K^{j+1}[u, \Phi_i]| \leq \frac{C_0}{\mathcal{V}} \gamma(L) \mathcal{V}_{j+1},$$

where  $\gamma$  is defined by (26). On the other hand, using Proposition 8,

$$(113) \quad \|H^{j+1}[r, u - v, \nabla\Phi_i]\|_{\partial\mathcal{D}(t)} \leq \sum_{\zeta \in \mathcal{B}_{j+1}} \frac{3^{s+s'}(j+1)!}{\alpha!(s-1)!} \|h(\zeta)[r, u - v, \nabla\Phi_i]\|_{\partial\mathcal{D}(t)},$$

where  $\zeta := (s, s', \alpha)$  and  $h(\zeta)[r, u - v, \nabla\Phi_i]$  is defined in (91). To estimate the body velocity  $v$  in  $h(\zeta)[r, u - v, \nabla\Phi_i]$ , we will use the following result.

LEMMA 8. – *Under the same assumptions as Proposition 4, there exists a geometric constant  $C(\Omega) > 1$  such that for any  $m \leq k$*

$$(114) \quad \|D^m v\| \leq C(\Omega) \mathcal{V}_m.$$

*Proof.* – For any  $m \in \mathbb{N}^*$  applying  $D^m$  to the equation (16) yields

$$D^m v = \ell^{(m)} + r^{(m)} \wedge (x - x_B) + \sum_{l=0}^{m-1} \binom{m}{l} r^{(l)} \wedge (D^{m-l-1} u - \ell^{(m-l-1)}).$$

Consequently, using the fact that (73) is valid for indices  $1, \dots, k$ , we deduce that for any  $m \leq k$ ,

$$\|D^m v\| \leq C(\Omega) \mathcal{V}_m + 2 \sum_{l=0}^{m-1} \frac{m!}{(m-l)! l!} \cdot \frac{l! L^l \mathcal{V}^{l+1}}{(l+1)^2} \cdot \frac{(m-l-1)! L^{m-l-1} \mathcal{V}^{m-l}}{(m-l)^2} \\ \leq \left( C(\Omega) + \left[ 2 \sum_{l=0}^{m-1} \frac{(m+1)^2}{(m-l)^3 (l+1)^2} \right] \frac{1}{L} \right) \frac{m! L^m}{(m+1)^2} \mathcal{V}^{m+1} \leq C' \mathcal{V}_m,$$

by noticing that the term inside brackets is bounded in  $m$ , as seen by distinguishing  $l \geq m/2$  and  $l \leq m/2$ .  $\square$

Now from (90) and the fact that (73) is true for indices  $1, \dots, k$ , we deduce the following relation for  $\beta = (\beta_1, \dots, \beta_s) \in \mathbb{N}^s$  such that  $|\beta| \leq k$ :

$$(115) \quad \|\mathcal{R}_\beta[r]\| \leq \beta! L^{|\beta|} \Upsilon(s, \beta) \mathcal{V}^{|\beta|+s},$$

(recall that  $\Upsilon$  was defined in (42)). Hence using (50) and (91) we deduce that for  $\zeta \in \mathcal{B}_j$ , we have

$$\begin{aligned}
 \|h(\zeta)[r, u - v, \nabla\Phi_i]\|_{\partial\mathcal{J}(t)} &\leq c_{\rho_B}^s \prod_{i=1}^s \|\mathcal{R}_{\alpha_i}[r]\| \prod_{i=1}^s (\|D^{\alpha_{s'+i}}u\| + \|D^{\alpha_{s'+i}}v\|) \\
 &\leq c_{\rho_B}^s \prod_{i=1}^s \left[ \underline{\alpha}_i! L^{|\underline{\alpha}_i|} \varrho^{|\underline{\alpha}_i|+s'_i} \prod_{m=1}^{s'_i} \frac{1}{(1 + \underline{\alpha}_{i,m})^2} \right] \\
 &\quad \cdot \prod_{i=1}^s (1 + C(\Omega)) \frac{\alpha_{s'+i}! L^{\alpha_{s'+i}} \varrho^{\alpha_{s'+i}+1}}{(1 + \alpha_{s'+i})^2} \\
 (116) \qquad &\leq [c_{\rho_B} (1 + C(\Omega))]^s s! \Upsilon(s + s', \alpha) \alpha! L^{|\alpha|} \varrho^{j+1} \frac{C_0}{\varrho'},
 \end{aligned}$$

where  $\underline{\alpha}_{i,m}$  is the  $m$ -th term in  $\underline{\alpha}_i$ .

Combining (113) and (116) yields

$$\begin{aligned}
 &\|H^{j+1}[r, u - v, \nabla\Phi_i]\|_{\partial\mathcal{J}(t)} \\
 &\leq \sum_{2 \leq s+s' \leq j+2} \frac{3^{s+s'} s [c_{\rho_B} (1 + C(\Omega))]^s}{L^{s+s'-1}} \sum_{|\alpha|=j+2-s-s'} \Upsilon(s + s', \alpha) (j+1)! L^{j+1} \varrho^{j+2} \frac{C_0}{\varrho'}.
 \end{aligned}$$

Applying Lemma 2 in the above inequality implies

$$\begin{aligned}
 &\|H^{j+1}[r, u - v, \nabla\Phi_i]\|_{\partial\mathcal{J}(t)} \\
 &\leq \sum_{2 \leq s+s' \leq j+2} \frac{[c_{\rho_B} (1 + C(\Omega))]^{s+s'} (s + s')}{L^{s+s'-1}} \left( \frac{j+2}{j+3-s-s'} \right)^2 \varrho_{j+1} \frac{C_0}{\varrho'}.
 \end{aligned}$$

We notice that for  $2 \leq j' \leq j+2$  we have  $\left(\frac{j+2}{j+3-j'}\right)^2 \leq 4j'^2$ , by distinguishing  $j' \geq (j+2)/2$  and  $j' < (j+2)/2$ . Hence we can set

$$\tilde{\gamma}_1(L) := 4 \sum_{j' \geq 2} \frac{(60c_{\rho_B} (1 + C(\Omega)))^{j'} j'^3}{L^{j'-1}},$$

and deduce

$$(117) \qquad \|H^{j+1}[r, u - v, \nabla\Phi_i]\|_{\partial\mathcal{J}(t)} \leq \tilde{\gamma}_1(L) \varrho_{j+1} \frac{C_0}{\varrho'}.$$

For what concerns the term  $D^{j+1}K_i$  we may apply Proposition 8 (giving the same estimates for  $H^k$  and  $\tilde{H}^k$ ) to deduce in the same manner

$$(118) \qquad \|D^{j+1}K_i\|_{\partial\mathcal{J}(t)} \leq \frac{C_0}{\varrho'} \tilde{\gamma}_1(L) \varrho_{j+1}.$$

As a consequence, combining (111), (112) and (117) yields

$$(119) \qquad \|D^{j+1}\nabla\Phi_i\| \leq c_{\tau} \gamma_1(L) \frac{C_0}{\varrho'} \varrho_{j+1},$$

with  $\gamma_1 := 2\tilde{\gamma}_1 + \gamma$ . Hence we obtain the second point of the proposition for

$$\gamma_2 = c_{\tau} C_0 \gamma_1.$$

We now turn to the claims concerning  $\mu$ . The function  $\nabla\mu$  defined by (58)–(60) satisfies

$$\begin{aligned} \operatorname{div} \nabla\mu &= -\operatorname{tr} \{F^1[u, u]\} = -\operatorname{tr} \{\nabla u \cdot \nabla u\}, & \operatorname{curl} \nabla\mu &= 0 \quad \text{in } \partial\mathcal{F}(t), \\ n \cdot \nabla\mu &= \sigma \quad \text{on } \partial\varphi(t), & n \cdot \nabla\mu &= -H^1[u, u] \quad \text{on } \partial\Omega, \end{aligned}$$

where  $\sigma$  is defined by (62). Hence (75) follows again from Lemma 6.

The proof that the validity of (73) for  $j \leq k$  implies the one of (76) for  $1 \leq j \leq k$  is completely similar to the equivalent proof for  $\Phi_i$ . It is mainly a matter of considering (112) where one multiplies by  $\mathcal{V}$  rather than dividing by it; following the same lines we reach the conclusion.

### 5.3. Proof of Proposition 5

We cut the proof of Proposition 5 into two pieces. Under the same assumption that (73) is valid for all  $j \leq k$ , we first prove

$$(120) \quad \|\ell^{(k+1)}\| + \|r^{(k+1)}\| \leq \mathcal{V}_{k+1} \gamma_4(L),$$

and then prove

$$(121) \quad \|D^{k+1}u\| \leq \mathcal{V}_{k+1} \gamma_5(L),$$

for positive decreasing functions  $\gamma_4, \gamma_5$  with  $\lim_{L \rightarrow +\infty} \gamma_4(L) + \gamma_5(L) = 0$ .

Let us first prove (120). Differentiating the equations (71)  $k$  times with respect to the time yields the identity:

$$(122) \quad \mathcal{M} \begin{bmatrix} \ell \\ r \end{bmatrix}^{(k+1)} = -\sum_{j=1}^k \binom{k}{j} \mathcal{M}^{(j)} \begin{bmatrix} \ell \\ r \end{bmatrix}^{(k-j+1)} + \frac{d^k}{dt^k} \begin{bmatrix} 0 \\ \mathcal{J}r \wedge r \end{bmatrix} + \Xi^{(k)}.$$

Since  $Q$  is orthogonal, we have  $\|Q^{(0)}\| = 1$ . Applying Proposition 9, using the fact that (73) is valid for  $1 \leq j \leq k$ , and using Lemma 2, we obtain for  $j \in \{1, \dots, k\}$

$$\begin{aligned} \|Q^{(j)}\| &\leq \sum_{s=1}^j \sum_{\alpha \in \mathcal{E}_{j-1, s}} \frac{(j-1)!}{\alpha!(s-1)!} \alpha! L^{|\alpha|} \mathcal{V}^{|\alpha|+s} \prod_{l=1}^s \frac{1}{(1+\alpha_l)^2} \\ &\leq \frac{\mathcal{V}_j}{\mathcal{V}} \sum_{s=1}^j \frac{1}{(s-1)!} \left( \frac{j+1}{j-s+1} \right)^2 \frac{20^s}{L^{s-2}}. \end{aligned}$$

Thus, for all  $j \in \{1, \dots, k\}$ , we have

$$\|Q^{(j)}\| \leq \hat{\gamma}(L) \frac{\mathcal{V}_j}{\mathcal{V}},$$

with

$$\hat{\gamma}(L) = \sup_{j \geq 1} \left( \sum_{s=1}^j \frac{1}{(s-1)!} \left( \frac{j+1}{j-s+1} \right)^2 \frac{20^s}{L^{s-2}} \right).$$

Now, thanks to (18),

$$\mathcal{J}^{(j)} = \sum_{i=0}^j \binom{j}{i} (Q^{(j-i)}) \mathcal{J}_0 (Q^{(i)})^*.$$

Using that for some  $c > 0$ , one has  $\hat{\gamma}^2(L) \leq c\hat{\gamma}(L)$  (one can take  $c = 1$  for  $L$  large enough), it follows that for  $j \in \{1, \dots, k\}$ ,

$$\begin{aligned} \|\mathcal{J}^{(j)}\| &\leq c\|\mathcal{J}_0\|\hat{\gamma}(L) \sum_{i=0}^j \binom{j}{i} \frac{i! L^i \mathcal{V}^i}{(i+1)^2} \frac{(j-i)! L^{j-i} \mathcal{V}^{j-i}}{(j-i+1)^2} \\ &\leq c\|\mathcal{J}_0\|\hat{\gamma}(L) L^j \mathcal{V}^j \sum_{i=0}^j \frac{1}{(i+1)^2 (j-i+1)^2} \\ &\leq c \frac{2\pi^2}{3} \|\mathcal{J}_0\|\hat{\gamma}(L) \frac{\mathcal{V}_j}{\mathcal{V}}, \end{aligned}$$

by splitting again the sum according to  $i \leq j/2$  and  $i > j/2$ . From (72) we deduce for  $j \geq 1$ ,

$$\mathcal{M}_1^{(j)} = \begin{bmatrix} 0 & 0 \\ 0 & \mathcal{J}^{(j)} \end{bmatrix},$$

hence we obtain

$$(123) \quad \|\mathcal{M}_1^{(j)}\| = \|\mathcal{J}^{(j)}\| \leq \hat{\gamma}_1(L) \frac{\mathcal{V}_j}{\mathcal{V}},$$

with  $\hat{\gamma}_1 = c \frac{2\pi^2}{3} \|\mathcal{J}_0\|\hat{\gamma}(L)$ . Using the definition of  $\mathcal{M}_2$  (see (72)), we have

$$(124) \quad [\mathcal{M}_2^{(j)}]_{a,b} = \sum_{i=0}^j \binom{j}{i} \int_{\mathcal{J}(t)} D^i \nabla \Phi_a \cdot D^{j-i} \nabla \Phi_b \, dx.$$

By using Proposition 4, we deduce as above that

$$\|\mathcal{M}_2^{(j)}\| \leq \hat{\gamma}_2(L) \frac{\mathcal{V}_j}{\mathcal{V}} \quad (j \geq 1),$$

with  $\hat{\gamma}_2 = c_2 \max(C_0, 1) \frac{2\pi^2}{3} \gamma_2$ ,  $c_2$  being a constant such that  $\gamma_2^2 \leq c_2 \gamma_2$ .

Fixing  $\hat{\gamma}_3 := \hat{\gamma}_1 + \hat{\gamma}_2$  we can now estimate the first term of the right hand side of (122) as follows:

$$(125) \quad \left\| \sum_{j=1}^k \binom{k}{j} \mathcal{M}^{(j)} \begin{bmatrix} \ell \\ r \end{bmatrix}^{(k-j+1)} \right\| \leq \sum_{j=1}^k \binom{k}{j} \hat{\gamma}_3(L) \frac{\mathcal{V}_j}{\mathcal{V}} \mathcal{V}_{k-j+1} \leq \frac{2\pi^2}{3} \hat{\gamma}_3(L) \mathcal{V}_{k+1}.$$

Next, we consider the term

$$\frac{d^k}{dt^k} (\mathcal{J}r \wedge r) = \sum_{i+j+a=k} \frac{k!}{i!j!a!} \mathcal{J}^{(i)} r^{(j)} \wedge r^{(a)}.$$

Using that (73) is valid for  $j \leq k$  and (123), we deduce

$$\begin{aligned}
\left\| \frac{d^k}{dt^k} (\mathcal{J}r \wedge r) \right\| &\leq \sum_{\substack{i+j+a=k \\ i \neq 0}} \frac{k!}{i!j!a!} \hat{\gamma}_1(L) \frac{\mathcal{V}_i}{\mathcal{V}^j} \mathcal{V}_j \mathcal{V}_a + \sum_{j+a=k} \frac{k!}{j!a!} \mathcal{V}_j \mathcal{V}_a, \\
&\leq \frac{k!L^k \mathcal{V}^{k+2}}{(k+1)^2} \left( \hat{\gamma}_1(L) \sum_{\substack{i+j+a=k \\ i \neq 0}} \frac{(k+1)^2}{(i+1)^2(j+1)^2(a+1)^2} + \sum_{j+a=k} \frac{(k+1)^2}{(j+1)^2(a+1)^2} \right), \\
(126) \quad &\leq \frac{k!L^k}{(k+1)^2} \mathcal{V}^{k+2} \left( 27 \left( \frac{\pi^2}{6} \right)^2 \hat{\gamma}_1(L) + \frac{2\pi^2}{3} \right),
\end{aligned}$$

where we distinguished the cases where  $i \geq k/3$ ,  $j \geq k/3$  and  $a \geq k/3$ .

Finally, we estimate for  $a \in \{1, \dots, 6\}$

$$\Xi_a^{(k)} = \sum_{j=0}^k \binom{k}{j} \int_{\mathcal{G}(t)} D^j \nabla \mu \cdot D^{k-j} \nabla \Phi_a \, dx.$$

Applying Proposition 4, we deduce from the above equality, in the same way as previously, that

$$(127) \quad \left\| \Xi_a^{(k)} \right\| \leq \gamma_2(L) \max(C_0, 1) \frac{2\pi^2}{3} \frac{(k+1)!L^{k+1} \mathcal{V}^{k+2}}{(k+1)^2}.$$

Gathering (122), (125), (126) and (127), we obtain (120).

In order to obtain (121), we write

$$(128) \quad D^{k+1}u = -D^k \nabla p = -D^k \nabla \mu + D^k \left( \nabla \Phi \cdot \begin{bmatrix} \ell \\ r \end{bmatrix}' \right).$$

We notice that

$$D^k \left( \nabla \Phi \cdot \begin{bmatrix} \ell \\ r \end{bmatrix}' \right) = \sum_{i=0}^k \binom{k}{i} D^i \nabla \Phi \cdot \begin{bmatrix} \ell^{(k-i+1)} \\ r^{(k-i+1)} \end{bmatrix}.$$

Thus, by using (73) (valid up to rank  $k$ ) and (74) (valid up to rank  $k+1$  due to Proposition 4) to estimate the terms of the above sum corresponding to  $i \geq 1$  and by using (120) for the term corresponding to  $i = 0$ , we deduce

$$\left\| D^k \left( \nabla \Phi \cdot \begin{bmatrix} \ell \\ r \end{bmatrix}' \right) \right\| \leq \left( \frac{2\pi^2}{3} \gamma_2(L) + \gamma_3(L) C_0 \right) \mathcal{V}_{k+1}.$$

Combining the above inequality, (128) and (76) (valid up to rank  $k$ ), we obtain (121), and the proof is complete.

## 6. Proof of the formal identities

We introduce the following notations:

DEFINITION 1. – For any  $s \in \mathbb{N}^*$ , for any  $1 \leq j \leq s$  we define the operators  $T_{s,j}$  from  $\mathbb{N}^s$  into  $\mathbb{N}^s$  and  $\tilde{T}_{s,j}$  from  $\mathbb{N}^s$  into  $\mathbb{N}^{s+1}$  by setting, for any  $\alpha := (\alpha_1, \dots, \alpha_s) \in \mathbb{N}^s$ ,

$$T_{s,j}(\alpha) = \alpha + e_j \text{ with } e_j := (\delta_{i,j})_{1 \leq i \leq s},$$

$$\tilde{T}_{s,j}(\alpha) = (\beta_1, \dots, \beta_{s+1}) \text{ with } \beta_i = \alpha_i \text{ if } i < j, \beta_j = 0 \text{ and } \beta_i = \alpha_{i-1} \text{ if } i > j.$$

The operators  $T_{s,j}$  and  $\tilde{T}_{s,j}$  naturally generate operators  $T_j$  and  $\tilde{T}_j$  from  $\prod_{s \in \mathbb{N}^*} \mathbb{N}^s$  into itself (with the convention that  $T_{s,j}(\alpha) = \tilde{T}_{s,j}(\alpha) = \alpha$  for  $s < j$ ).

### 6.1. Proof of Proposition 6

We consider a smooth vector field  $\psi$  defined in the fluid domains.

*Proof of (84).* – We proceed by induction on  $k$ . We first deduce from (80) the relation (84) for  $k = 1$  with  $c_1^1(2, (0, 0)) = 1$  since in this case  $s$  takes only the value 2 and the set  $\mathcal{A}_k$  (defined in (35)) reduces to  $\{(2, (0, 0))\}$ .

Now let us assume that (84) with estimate (86) holds up to rank  $k$ . Then using the rule of commutation (80) we obtain

$$\operatorname{div} D^{k+1}\psi = D^{k+1}(\operatorname{div} \psi) + \operatorname{tr} \{F^{k+1}[u, \psi]\},$$

with

$$(129) \quad F^{k+1}[u, \psi] = DF^k[u, \psi] + (\nabla u) \cdot (\nabla D^k \psi).$$

To simplify the notations we will from now on drop the dependence of the functions  $f(\theta)[u, \psi]$  on  $[u, \psi]$ .

As a consequence of the Leibniz rule (78) and the rule of commutation (79), we immediately infer that for any  $\theta := (s, \alpha)$  with  $s \in \mathbb{N}^*$  and  $\alpha \in \mathbb{N}^s$ , the derivative w.r.t.  $D$  of the functional  $f(\theta)$  (defined in (82)) is given by

$$(130) \quad Df(\theta) = \sum_{1 \leq j \leq s} \left[ f(R_a^j(\theta)) - f(R_b^j(\theta)) \right],$$

where

$$(131) \quad R_a^j(\theta) := (s, T_j(\alpha)) \text{ and } R_b^j(\theta) := (s+1, \tilde{T}_j(\alpha)).$$

Hence  $DF^k = F_a - F_b$  with for  $l = a, b$

$$F_l := \sum_{\theta \in \mathcal{A}_k} \sum_{1 \leq j \leq s} c_k^1(\theta) f(R_l^j(\theta)) = \sum_{j=1}^{k+1} \sum_{\theta \in \mathcal{A}_k^j} c_k^1(\theta) f(R_l^j(\theta)),$$

with

$$\mathcal{A}_k^j := \left\{ \theta := (s, \alpha) \in \mathcal{A}_k / s \geq j \right\}.$$

The mappings  $R_a^j$  and  $R_b^j$  are injective on  $\mathcal{A}_k^j$  and take values in

$$(132) \quad R_a^j(\mathcal{A}_k^j) \subset \mathcal{A}_{k+1}^j \text{ and in } R_b^j(\mathcal{A}_k^j) \subset \mathcal{A}_{k+1}^{j+1}, \text{ respectively.}$$

For  $l = a, b$  changing the index  $\theta$  via the operator  $R_l^j$  yields

$$F_l = \sum_{j=1}^{k+1} \sum_{\theta \in R_l^j(\mathcal{U}_k^j)} c_{k,l}^{1,j}(\theta) f(\theta) = \sum_{\theta \in \mathcal{U}_{k+1}} \sum_{j \in \mathcal{J}_l^k(\theta)} c_{k,l}^{1,j}(\theta) f(\theta),$$

where

$$c_{k,l}^{1,j}(\theta) := c_k^1((R_l^j)^{-1}(\theta)) \text{ and } \mathcal{J}_l^k(\theta) := \{j \in \mathbb{N}^* / \theta \in R_l^j(\mathcal{U}_k^j)\}.$$

Recalling (129) we finally get that (84) holds at the order  $k + 1$  when setting for  $\theta \in \mathcal{U}_{k+1}$

$$c_{k+1}^1(\theta) := \sum_{j \in \mathcal{J}_a^k(\theta)} c_{k,a}^{1,j}(\theta) - \sum_{j \in \mathcal{J}_b^k(\theta)} c_{k,b}^{1,j}(\theta) + \delta_{(2,(0,k))}(\theta).$$

When  $j \in \mathcal{J}_a^k(\theta)$  (respectively  $j \in \mathcal{J}_b^k(\theta)$ ) we have, thanks to the previous steps and recalling the definition (131):

$$|c_{k,a}^{1,j}(\theta)| \leq \frac{k!}{(T_j^{-1}(\alpha))!} = \alpha_j \frac{k!}{\alpha!} \text{ and } |c_{k,b}^{1,j}(\theta)| \leq \frac{k!}{(\tilde{T}_j^{-1}(\alpha))!} = \frac{k!}{\alpha!}.$$

Moreover it is a consequence of (132) that  $\mathcal{J}_a^k(\theta) \subset \{1, \dots, s\}$  and  $\mathcal{J}_b^k(\theta) \subset \{1, \dots, s-1\}$ . Hence for  $3 \leq s \leq k+2$ , we have

$$\begin{aligned} |c_{k+1}^1(\theta)| &\leq \sum_{j \in \mathcal{J}_a^k(\theta)} |c_{k,a}^{1,j}(\theta)| + \sum_{j \in \mathcal{J}_b^k(\theta)} |c_{k,b}^{1,j}(\theta)| \\ &\leq \left( \sum_{1 \leq j \leq s} \alpha_j + s - 1 \right) \frac{k!}{\alpha!} \\ &\leq \frac{(k+1)!}{\alpha!}, \end{aligned}$$

since  $\theta \in \mathcal{U}_{k+1}$ .

Besides, for  $s = 2$ , one can see that  $\mathcal{J}_b^k(\theta) = \emptyset$ . In that case we have  $\alpha := (\alpha_1, \alpha_2)$  with  $\alpha_1 + \alpha_2 = k$ , so that  $\alpha! \leq k!$  and

$$|c_{k+1}^1(2, \alpha)| \leq 1 + (\alpha_1 + \alpha_2) \frac{k!}{\alpha!} \leq \frac{(k+1)!}{\alpha!},$$

and (84) is proved.  $\square$

*Proof of (85).* – Proceeding as previously we can also obtain formal identities of the curl of the iterated material derivatives  $(D^k \psi)_{k \in \mathbb{N}^*}$ . Substituting the rule of commutation (81) to (80) in the proof of (84) we obtain (85). In the same way, here the case  $k = 1$  is a consequence of (81).  $\square$

*Proof of (87).* – We now establish formal identities for the normal trace  $n \cdot D^k \psi$  of iterated material derivatives  $(D^k \psi)_{k \in \mathbb{N}^*}$  on the boundary  $\partial\Omega$  as combinations of the functionals  $h(\theta)$  defined in (82).

As  $D$  is tangential to the boundary  $(-T, T) \times \partial\Omega$  we infer that

$$n \cdot (D\psi) = D(n \cdot \psi) - \nabla^2 \rho_\Omega \{u, \psi\},$$

so that (87) holds for  $k = 1$  since in this case the set  $\mathcal{U}_1$  reduces to  $\{(2, (0, 0))\}$ . Hence  $c_1^3(2, (0, 0)) = -1$  and satisfies  $|c_1^3(2, (0, 0))| \leq \frac{1!}{0!0!}$ .



Now let us assume that (87) with estimate (88) holds up to rank  $k$ . Applying  $D$  to the relation (87) yields the relation

$$(133) \quad H^{k+1} = DH^k - \nabla^2 \rho_\Omega \{u, D^k \psi\}.$$

Now using the chain rule we easily get that for  $s \in \mathbb{N}^*$  and  $\alpha := (\alpha_1, \dots, \alpha_s) \in \mathbb{N}^s$ , one has

$$(134) \quad Dh(\theta) = h(R_b^1(\theta)) + \sum_{1 \leq j \leq s} h(R_a^j(\theta)),$$

where  $R_a^j$  and  $R_b^1$  were defined in (131). We deduce that

$$\begin{aligned} DH^k &= \sum_{\theta \in \mathcal{U}_k} c_k^3(\theta) h(R_b^1(\theta)) + \sum_{\theta \in \mathcal{U}_k} c_k^3(\theta) \sum_{1 \leq j \leq s} h(R_a^j(\theta)) \\ &= \sum_{\theta \in \mathcal{U}_k} c_k^3(\theta) h(R_b^1(\theta)) + \sum_{1 \leq j \leq k+1} \sum_{\theta \in \mathcal{U}_k^j} c_k^3(\theta) h(R_a^j(\theta)). \end{aligned}$$

We proceed as previously and change the index  $\theta$  in the sums via the maps  $R_a^j$  and  $R_b^1$ :

$$DH^k = \sum_{\theta \in R_b^1(\mathcal{U}_k)} c_{k,b}^{3,1}(\theta) h(\theta) + \sum_{1 \leq j \leq k+1} \sum_{\theta \in R_a^j(\mathcal{U}_k^j)} c_{k,a}^{3,j}(\theta) h(\theta),$$

where  $c_{k,l}^{3,j}(\theta) := c_k^3((R_l^j)^{-1}(\theta))$  for  $l = a, b$ . Hence

$$DH^k = \sum_{\theta \in \mathcal{U}_{k+1}} \left[ \mathbf{1}_{R_b^1(\mathcal{U}_k)}(\theta) c_{k,b}^{3,1}(\theta) + \sum_{j \in \mathcal{J}_a^k(\theta)} c_{k,a}^{3,j}(\theta) \right] h(\theta),$$

where we define for  $\theta \in \mathcal{U}_{k+1}$  the set

$$\mathcal{J}_a^k(\theta) := \left\{ j \in \mathbb{N}^* / \theta \in R_a^j(\mathcal{U}_k^j) \right\}.$$

Recalling (133) we get that (39) holds at the order  $k+1$  when setting for  $\theta \in \mathcal{U}_{k+1}$

$$c_{k+1}^3(\theta) = \mathbf{1}_{R_b^1(\mathcal{U}_k)}(\theta) c_{k,b}^{3,1}(\theta) + \sum_{j \in \mathcal{J}_a^k(\theta)} c_{k,a}^{3,j}(\theta) - \delta_{(2,(0,k))}(\theta).$$

Thus, for  $3 \leq s \leq k+2$ , using the induction Hypothesis (88) on  $c_{k,b}^{3,1}$  and  $c_{k,a}^{3,j}$ ,

$$|c_{k+1}^3(\theta)| \leq \left( \sum_{1 \leq j \leq s} \alpha_j + (s-1) \right) \frac{k!}{\alpha!(s-1)!} \leq \frac{(k+1)!}{\alpha!(s-1)!},$$

and since the inequality also holds for  $s=2$ , (87)-(88) is proved at rank  $k+1$ .  $\square$

## 6.2. Proof of Proposition 8

We first prove a lemma. Here and in the sequel, the symbol “ $\nabla$ ” refers to a derivation with respect to the variable  $x$  only.

LEMMA 9. – For all  $k \geq 1$ , for any  $(u^1, \dots, u^k)$  in  $(\mathbb{R}^3)^k$

$$(135) \quad \begin{aligned} D(\nabla^k \rho_B(t, x) \{u^1, \dots, u^k\}) \\ = - \sum_{1 \leq j \leq k} \nabla^k \rho_B(t, x) \{u^1, \dots, \mathcal{R}(r)u^j, \dots, u^k\} + \nabla^{k+1} \rho_B(t, x) \{u - v, u^1, \dots, u^k\}. \end{aligned}$$

*Proof.* – We recall that, since the motion of the body is rigid,  $\rho_B(t, x)$  is given by (65)-(66). Hence by spatial derivation we infer that for any  $k \geq 1$ ,

$$(136) \quad \nabla^k \rho_B(t, x)\{u^1, \dots, u^k\} = \nabla^k \rho_0(\hat{\chi}(t, x))\{Q(t)^* u^1, \dots, Q(t)^* u^k\}.$$

We then apply a time derivative:

$$\begin{aligned} \partial_t(\nabla^k \rho_B(t, x)) &= \nabla^{k+1} \rho_0(\hat{\chi}(t, x))\{\partial_t \hat{\chi}(t, x), Q(t)^* u^1, \dots, Q(t)^* u^k\} \\ &\quad + \sum_{1 \leq j \leq k} \nabla^k \rho_B(t, x)\{Q(t)^* u^1, \dots, \left(\frac{dQ^*}{dt}\right) u^j, \dots, Q(t)^* u^k\}. \end{aligned}$$

Now we use (17) to infer

$$\frac{dQ^*}{dt} = -Q^* \cdot [r(t) \wedge \cdot].$$

With (68), and using again (136), this gives the result.  $\square$

The derivative computed in (135) is the partial derivative of  $\nabla^k \rho_B(t, x)\{u^1, \dots, u^k\}$  with respect to the first variables  $(t, x)$ , the variables between brackets being let fixed. Now to differentiate  $h(\zeta)[r, u - v, \psi]$  (defined in (91)), we have to take the dependence of the second group of variables into account. This is the aim of the next lemma.

LEMMA 10. – For any  $s \in \mathbb{N}^*$ , for any  $\mathbf{s}' := (s'_1, \dots, s'_s)$  in  $\mathbb{N}^s$ , for any  $\alpha \in \mathbb{N}^{s'+s}$ , we have

$$(137) \quad Dh(\zeta) = \left[ \sum_{1 \leq j \leq s'+s} h(R_a^j(\zeta)) \right] + h(R_b(\zeta)) - \sum_{1 \leq j \leq s} h(R_c^j(\zeta)),$$

where all the functions  $h$  are evaluated at  $[r, u - v, \psi]$  and where

$$(138) \quad \begin{aligned} R_a^j(\zeta) &:= (s, \mathbf{s}', T_j(\alpha)), \quad R_b(\zeta) := (s + 1, \tilde{T}_1(\mathbf{s}'), \tilde{T}_{s'+1}(\alpha)) \\ \text{and } R_c^j(\zeta) &:= (s, T_j(\mathbf{s}'), \tilde{T}_{\tau_j(\mathbf{s}')+1}(\alpha)) \end{aligned}$$

for  $1 \leq j \leq s$ , where we denote  $\tau_j(\mathbf{s}')$  the “position” of the index  $s'_j$ :

$$(139) \quad \tau_j(\mathbf{s}') = \sum_{k=1}^j s'_k,$$

with the convention that  $\tau_0(\mathbf{s}') := 0$ .

*Proof.* – Roughly speaking, the three expressions in (137) correspond, in the use of Leibniz’s rule, to differentiate once more an expression in the arguments of  $\nabla^s \rho_B$ , to differentiate  $\nabla^s \rho_B$  once more with the additional argument  $u - v$  in first position, and to add a rotation

factor  $r \wedge \cdot$  in one of the arguments. To be more precise, using the chain rule we deduce (140)

$$\begin{aligned} & D[\nabla^s \rho_B(t, x) \{ \mathcal{R}_{\underline{\alpha}_1}[r] D^{\alpha_{s'+1}}(u-v), \dots, \mathcal{R}_{\underline{\alpha}_{s-1}}[r] D^{\alpha_{s'+s-1}}(u-v), \mathcal{R}_{\underline{\alpha}_s}[r] D^{\alpha_{s'+s}} \psi \}] \\ &= D[\nabla^s \rho_B(t, x)] \{ \mathcal{R}_{\underline{\alpha}_1}[r] D^{\alpha_{s'+1}}(u-v), \dots, \\ &\quad \mathcal{R}_{\underline{\alpha}_{s-1}}[r] D^{\alpha_{s'+s-1}}(u-v), \mathcal{R}_{\underline{\alpha}_s}[r] D^{\alpha_{s'+s}} \psi \} \\ &+ \sum_{1 \leq j \leq s-1} \nabla^s \rho_B(t, x) \{ \mathcal{R}_{\underline{\alpha}_1}[r] D^{\alpha_{s'+1}}(u-v), \dots, \\ &\quad D[\mathcal{R}_{\underline{\alpha}_j}[r] D^{\alpha_{s'+j}}(u-v)], \dots, \mathcal{R}_{\underline{\alpha}_s}[r] D^{\alpha_{s'+s}} \psi \} \\ &+ \nabla^s \rho_B(t, x) \{ \mathcal{R}_{\underline{\alpha}_1}[r] D^{\alpha_{s'+1}}(u-v), \dots, \\ &\quad \mathcal{R}_{\underline{\alpha}_{s-1}}[r] D^{\alpha_{s'+s-1}}(u-v) D[\mathcal{R}_{\underline{\alpha}_s}[r] D^{\alpha_{s'+s}} \psi] \}. \end{aligned}$$

Now for the last two terms in (140), we use the fact that

$$D(\mathcal{R}_{\underline{\alpha}_j}[r] D^{\alpha_{s'+j}} \varphi) = \mathcal{R}_{\underline{\alpha}_{j+1}}[r] D^{\alpha_{s'+j}} \varphi + \mathcal{R}_{\underline{\alpha}_j}[r] D^{\alpha_{s'+j+1}} \varphi.$$

Hence these two terms yield the first sum in (137). For what concerns the first term in (140), we use Lemma 9 and obtain the second and third parts of (137).  $\square$

Let us now establish Proposition 8. We first prove (93). First, according to (69),

$$n \cdot D\psi = D(n \cdot \psi) + \nabla \rho_B \{ \mathcal{R}[r] \psi \} - \nabla^2 \rho_B \{ u-v, \psi \}.$$

Hence (93) holds for  $k = 1$ . Now let us assume that (93) with estimate (96) holds up to rank  $k$ . Applying  $D$  to relation (93), using Leibniz's rule and (69) yields the relation

$$(141) \quad H^{k+1}[r, u-v, \psi] = DH^k[r, u-v, \psi] + n \cdot (r \wedge D^k \psi) - \nabla^2 \rho_B \{ u-v, D^k \psi \}.$$

To simplify the notations, from now on we omit the dependence on  $[r, u-v, \psi]$ . According to Lemma 10 there holds

$$(142) \quad DH^k = H_a + H_b - H_c,$$

where

$$(143) \quad H_a := \sum_{\zeta \in \mathcal{B}_k} d_k^1(\zeta) \sum_{1 \leq j \leq s'+s} h(R_a^j(\zeta)),$$

$$(144) \quad H_b := \sum_{\zeta \in \mathcal{B}_k} d_k^1(\zeta) h(R_b(\zeta)),$$

$$(145) \quad H_c := \sum_{\zeta \in \mathcal{B}_k} d_k^1(\zeta) \sum_{1 \leq j \leq s} h(R_c^j(\zeta)).$$

Define for  $j \geq 1$

$$\mathcal{B}_{a,k}^j := \{ \zeta := (s, s', \alpha) \in \mathcal{B}_k / j \leq s + s' \} \text{ and } \mathcal{B}_{c,k}^j := \{ \zeta := (s, s', \alpha) \in \mathcal{B}_k / j \leq s \},$$

so that

$$H_l = \sum_{j=1}^{k+1} \sum_{\zeta \in \mathcal{B}_{l,k}^j} d_k^1(\zeta) g(R_l^j(\zeta)) \text{ for } l = a, c.$$

We notice that the mappings  $R_a^j$ ,  $R_b$  and  $R_c^j$  are injective respectively on  $\mathcal{B}_{a,k}^j$ ,  $\mathcal{B}_k$  and  $\mathcal{B}_{c,k}^j$  so that

$$H_l = \sum_{j=1}^{k+1} \sum_{\zeta \in R_l^j(\mathcal{B}_{l,k}^j)} d_{k,l}^{1,j}(\zeta) g(\zeta) \text{ for } l = a, c,$$

$$H_b = \sum_{\zeta \in R_b(\mathcal{B}_k)} d_{k,b}^1(\zeta) g(\zeta),$$

where  $d_{k,l}^{1,j}(\zeta) := d_k^1((R_l^j)^{-1}(\zeta))$  for  $l = a, c$  and  $d_{k,b}^1(\zeta) := d_k^1((R_b)^{-1}(\zeta))$ . Now we introduce the sets associated to any  $\zeta \in \mathcal{B}_{k+1}$ :

$$\mathcal{J}_l^k(\zeta) := \left\{ j \in \{1, \dots, k+1\} / \zeta \in R_l^j(\mathcal{B}_{l,k}^j) \right\} \text{ for } l = a, c.$$

As previously  $\mathcal{J}_a^k(\zeta) \subset \{1, \dots, s+s'\}$  and  $\mathcal{J}_c^k(\zeta) \subset \{1, \dots, s\}$ . Now putting together the relations (141), (142), (143), (144) and (145), we get that (93) holds at the order  $k+1$  when setting for  $\zeta \in \mathcal{B}_{k+1}$ ,

$$d_{k+1}^1(\zeta) = \sum_{j \in \mathcal{J}_a^k(\zeta)} d_{k,a}^{1,j}(\zeta) - \sum_{j \in \mathcal{J}_c^k(\zeta)} d_{k,c}^{1,j}(\zeta) \\ + \mathbf{1}_{R_b(\mathcal{B}_k)}(\zeta) d_{k,b}^1(\zeta) + \delta_{(1,(1),((0),k))}(\zeta) - \delta_{(2,(0,0),(0,k))}(\zeta).$$

Thus for  $3 \leq s+s' \leq k+2$ , we have

$$|d_{k+1}^1(\zeta)| \leq \sum_{j \in \mathcal{J}_a^k(\zeta)} |d_{k,a}^{1,j}(\zeta)| + \sum_{j \in \mathcal{J}_c^k(\zeta)} |d_{k,c}^{1,j}(\zeta)| + |\mathbf{1}_{R_b(\mathcal{B}_k)}(\zeta) d_{k,b}^1(\zeta)|,$$

so that we get, using the induction hypothesis and  $\text{Card}[\mathcal{J}_c^k(\zeta)] \leq s$ ,

$$|d_{k+1}^1(\zeta)| \leq \left( \sum_{j \in \mathcal{J}_a^k(\zeta)} \alpha_j \frac{3^{s+s'} k!}{\alpha!(s-1)!} \right) + s \frac{3^{s+s'-1} k!}{\alpha!(s-1)!} + \frac{3^{s+s'-1} k!}{\alpha!(s-2)!} \\ \leq \left( \sum_{j \in \mathcal{J}_a^k(\zeta)} \alpha_j + \frac{2s-1}{3} \right) \frac{3^{s+s'} k!}{\alpha!(s-1)!}.$$

Now using that for  $j \in \{1, \dots, s+s'\}$ ,  $\zeta \in R_a^j(\mathcal{B}_{a,k}^j) \iff \alpha_j \geq 1$ , we see that

$$\sum_{j \in \mathcal{J}_a^k(\zeta)} \alpha_j = \sum_{j=1}^{s+s'} \alpha_j = k+1-s-s'.$$

Since  $2-s-3s' \leq -2s' \leq 0$ , we deduce

$$|d_{k+1}^1(\zeta)| \leq \left( k+1 + \frac{2-s-3s'}{3} \right) \frac{3^{s+s'} k!}{\alpha!(s-1)!} \leq \frac{3^{s+s'}(k+1)!}{\alpha!(s-1)!},$$

since  $(s, s', \alpha) \in \mathcal{B}_k$ .

Now if  $s+s'=2$ ,  $\zeta$  is not in the range of  $R_b$  or  $R_c$ , and there holds  $\alpha_1 + \alpha_2 = k$  so that  $\alpha! \leq k!$ . We deduce

$$|d_{k+1}^1(\zeta)| \leq 1 + \sum_{j \in \mathcal{J}_a^k(\zeta)} |d_{k,a}^{1,j}(\zeta)| \leq 1 + k \frac{3^2 k!}{\alpha!} \leq \frac{9(k+1)!}{\alpha!}.$$

Hence (93) with estimate (96) is proved at rank  $k + 1$ , which concludes the induction.

The proof of (94) with estimate (96) is similar: it suffices to notice that

$$\begin{aligned} D^k K_i &= D^k \nabla \rho_B \{e_i\} \quad (i = 1, 2, 3) \\ \text{or } D^k K_i &= D^k \nabla \rho_B \{e_{i-3} \wedge (x - x_B)\} \quad (i = 4, 5, 6) \end{aligned}$$

where the  $(e_1, e_2, e_3)$  is the canonical basis of  $\mathbb{R}^3$ .

**6.3. Proof of Proposition 9**

The case  $k = 1$  corresponds to (17). Let us assume that identity (97) with estimate (98) holds up to order  $k$ . We have by derivation that

$$\begin{aligned} Q^{(k+1)}y &= \sum_{s=1}^k \sum_{\alpha \in \mathcal{A}_{k-1,s}} c_k(\alpha) \left( \sum_{j=1}^s \mathcal{R}_{T_j(\alpha)}[r]Qy + \mathcal{R}_{\tilde{T}_{s+1}(\alpha)}[r]Qy \right), \\ &= \sum_{s=1}^k \sum_{\alpha \in \mathcal{A}_{k,s}} \sum_{j \in \mathcal{J}^k(\alpha)} c_k(T_j^{-1}(\alpha)) \mathcal{R}_\alpha[r]Qy + \sum_{s=2}^{k+1} \sum_{\substack{\alpha \in \mathcal{A}_{k,s} \\ \text{s.t. } \alpha_s=0}} c_k(\tilde{T}_s^{-1}(\alpha)) \mathcal{R}_\alpha[r]Qy, \\ &= \sum_{s=1}^{k+1} \sum_{\alpha \in \mathcal{A}_{k,s}} c_{k+1}(\alpha) \mathcal{R}_\alpha[r]Qy, \end{aligned}$$

with

$$\mathcal{J}^k(\alpha) = \{j \in \mathbb{N}^* / \alpha \in T_j(\mathcal{A}_{k-1,s})\}$$

and with

$$c_{k+1}(\alpha) := \mathbf{1}_{1 \leq s \leq k}(\alpha) \sum_{j \in \mathcal{J}^k(\alpha)} c_k(T_j^{-1}(\alpha)) + \mathbf{1}_{2 \leq s \leq k+1}(\alpha) \mathbf{1}_{\alpha_s=0}(\alpha) c_k(\tilde{T}_s^{-1}(\alpha)).$$

It is therefore easy to conclude.

**7. Proof of Corollary 3**

It follows from the proof of Theorem 5 that both solid flows satisfy for some constant  $\tilde{L}$  depending on  $\Omega, \varphi_0, \rho_{\varphi_0}$  and  $R$  only:

$$(146) \quad \left\| \frac{d^k}{dt^k} \Phi_i^{\varphi} \right\|_{L^\infty(-T_*, T_*; SE(3))} \leq \tilde{L}^k k!.$$

As a consequence the flows  $\Phi_i$  defined on  $[-T_*, T_*]$  can be analytically extended in

$$\mathcal{O} := \left\{ z \in \mathbb{C} / d(z, [-T_*, T_*]) < \frac{1}{2\tilde{L}} \right\}.$$

Let  $\mathcal{U}$  be an open Jordan domain with analytic boundary (the interior of an ellipse for instance) such that

$$[-T_*, T_*] \subset \mathcal{U} \subset \overline{\mathcal{U}} \subset \mathcal{O}.$$

Now the domain  $\mathcal{U} \setminus [-\tau, \tau]$  is a doubly connected domain in the complex plane. It follows that there is a conformal mapping  $\Psi$  from  $\mathcal{U} \setminus [-\tau, \tau]$  to some annulus:

$$\mathcal{A} := \left\{ z \in \mathbb{C} / 1 < |z| < \rho \right\},$$

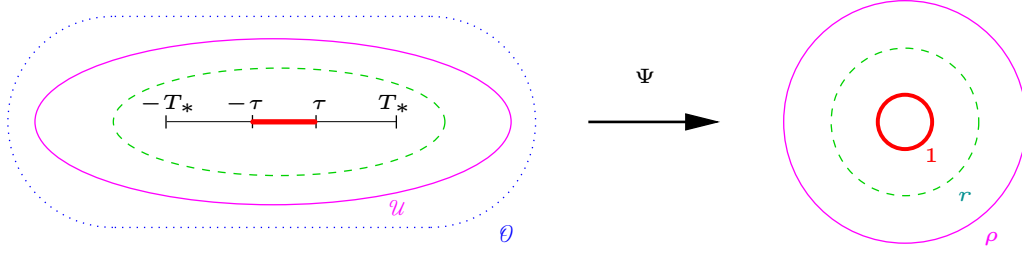


FIGURE 2. The conformal mapping  $\Psi$

with  $[-\tau, \tau]$  sent to  $S(0, 1)$  and  $\partial\mathcal{U}$  sent to  $S(0, \rho)$ . This is illustrated in Figure 2.

A way to realize this is to use a conformal map of  $\widehat{\mathbb{C}} \setminus \overline{B}(0, 1)$  to  $\widehat{\mathbb{C}} \setminus [-\tau, \tau]$  (here  $\widehat{\mathbb{C}}$  stands for the Riemann sphere) for instance the Joukowski map

$$J : z \mapsto \frac{\tau}{2} \left( z + \frac{1}{z} \right).$$

Now  $J^{-1}(\mathcal{U} \setminus [-\tau, \tau])$  is a doubly connected domain in the complex plane with analytic boundaries. Such a domain can be made conformally equivalent to  $\mathcal{U}$  by a mapping which is smooth up to the boundary, see for instance Ahlfors [1, Section 6.5.1].

Now, clearly, there exists  $r \in (1, \rho)$  such that

$$\Psi([-T_*, T_*]) \subset B(0, r).$$

Define

$$\varphi(z) = \Phi_1^\delta(z) - \Phi_2^\delta(z) \text{ on } \overline{\mathcal{U}}.$$

Apply Hadamard's three circle theorem to  $\tilde{\varphi} := \varphi \circ \Psi^{-1}$  in  $\mathcal{U}$  (note that  $\tilde{\varphi}$  is continuous up to the boundary since  $J$  is). For  $\delta = \log(\rho/r)/\log(\rho)$ , we have

$$\|\tilde{\varphi}\|_{L^\infty(S(0,r))} \leq \|\tilde{\varphi}\|_{L^\infty(S(0,1))}^\delta \|\tilde{\varphi}\|_{L^\infty(S(0,\rho))}^{1-\delta}.$$

Returning to  $\mathcal{U}$ , we deduce

$$\|\varphi\|_{L^\infty(-T_*, T_*)} \leq \|\varphi\|_{L^\infty(\Psi^{-1}(B(0,r)))} \leq \|\varphi\|_{L^\infty(-\tau, \tau)}^\delta \|\varphi\|_{L^\infty(\overline{\mathcal{U}})}^{1-\delta}.$$

(Here we could have put a stronger norm on the left hand side.) Now (146) allows us to bound the factor  $\|\varphi\|_{\overline{\mathcal{U}}}^{1-\delta}$  in terms of  $\Omega$ ,  $\varphi_0$ ,  $\rho_{\varphi_0}$  and  $R$ , which concludes the proof of Corollary 3.

### 8. Appendix: Cauchy problem

In this appendix, we prove Theorem 4 and Proposition 1.

### 8.1. Preliminaries and notations

In what follows, we prove existence and uniqueness for positive times, that is, on  $[0, T]$ . This is not a restriction since the system is clearly reversible.

Note that in this appendix, we will use the letter  $\eta$  for the fluid flow and  $\tau$  for the solid flow.

We suppose  $\phi_0$  and  $\rho_{\phi_0}$  fixed. By a geometric constant, we mean below a constant depending on  $\Omega$ ,  $\phi_0$  and  $\rho_{\phi_0}$ ,  $\lambda$  and  $r$  only. The various constants  $C > 0$  that will appear, and which can grow from line to line, will be geometric.

To  $(\ell, r) \in C^0([0, T]; \mathbb{R}^6)$  we can associate  $(x_B^{\ell, r}, Q^{\ell, r}) \in C^1([0, T]; \mathbb{R}^3 \times \mathbb{R}^{3 \times 3})$  by

$$(147) \quad x_B^{\ell, r}(t) = x_0 + \int_0^t \ell, \quad \frac{d}{dt} Q^{\ell, r}(t) = r(t) \wedge Q^{\ell, r}(t) \quad \text{and} \quad Q^{\ell, r}(0) = \text{Id},$$

and the velocity

$$(148) \quad v^{\ell, r}(t, x) := \ell(t) + r(t) \wedge (x - x_B^{\ell, r}(t)).$$

We also deduce the rigid displacement and the position of the solid, let us say  $\tau^{\ell, r}(t)$  and  $\phi^{\ell, r}(t)$  defined by

$$(149) \quad \tau^{\ell, r}(t) : x \mapsto Q^{\ell, r}(t)[x - x_0] + x_B^{\ell, r}(t) \in SE(3), \quad \text{and} \quad \phi^{\ell, r}(t) = \tau^{\ell, r}(t)\phi_0.$$

Then we fix the fluid domain as  $\mathcal{F}^{\ell, r}(t) := \Omega \setminus \phi^{\ell, r}(t)$ . We may omit the dependence on  $(\ell, r)$  when there is no ambiguity on the various objects defined above.

We will use the following lemmas which are elementary consequences of Faà di Bruno's formula and the fact that Hölder spaces are algebras, see [3, Lemmas A.2 & 4] in the case of Sobolev spaces.

LEMMA 11. – *Let  $k$  in  $\mathbb{N}^*$  and  $\alpha \in (0, 1)$ , and let  $\omega, \omega'$  be smooth bounded domains. Let  $F \in C^{k, \alpha}(\omega')$  and  $G \in C^{k, \alpha}(\omega)$  with  $G(\omega) \subset \omega'$ . Then  $F \circ G \in C^{k, \alpha}(\omega)$  with, for some constant  $C$  depending only on  $\omega, \omega'$  and  $k$ :*

$$(150) \quad \|F \circ G\|_{C^{k, \alpha}(\omega)} \leq C \|F\|_{C^{k, \alpha}(\omega')} \left( \|G\|_{C^{k, \alpha}(\omega)}^k + 1 \right).$$

LEMMA 12. – *Let  $\omega$  be a smooth bounded domain,  $F \in C^{k, \alpha}(\omega)$  and  $G \in \text{Diff}(\bar{\omega}) \cap C^{k, \alpha}(\omega)$ . Then for some constant  $C$  depending only on  $\omega, k \in \mathbb{N}^*, \alpha \in (0, 1)$  and  $\|G\|_{C^{k, \alpha}(\omega)}$ , one has*

$$(151) \quad \|\partial_i(F \circ G^{-1}) \circ G - \partial_i F\|_{C^{k-1, \alpha}(\omega)} \leq C \|G - \text{Id}\|_{C^{k, \alpha}(\omega)} \|F\|_{C^{k, \alpha}(\omega)}.$$

Above  $\text{Diff}(\bar{\omega})$  stands for the group of  $C^1$  diffeomorphisms of  $\bar{\omega}$ .

## 8.2. With a prescribed solid movement

In this paragraph we prove the following results, which concern the Euler system with a prescribed solid movement of  $\phi(t)$  inside  $\Omega$ . The first result gives existence and uniqueness of a solution for small times. The second one estimates the dependence of the solution with respect to the prescribed movement (in Lagrangian coordinates).

**PROPOSITION 10.** – *Let  $\lambda$  in  $\mathbb{N}$ ,  $r \in (0, 1)$ ,  $T_1 > 0$  and a regular closed connected subset  $\phi_0 \subset \Omega$ . There exists a constant  $C_* = C_*(\Omega, \phi_0) > 0$  such that the following holds. Consider  $(\ell, r) \in C^0([0, T_1]; \mathbb{R}^6)$  such that*

$$(152) \quad \text{for any } t \in [0, T_1], \quad d(\tau^{\ell, r}(t)[\phi_0], \partial\Omega) > 0.$$

*Consider  $u_0$  in  $C^{\lambda+1, r}(\mathcal{F}_0)$  satisfying*

$$(153) \quad \operatorname{div}(u_0) = 0 \text{ in } \mathcal{F}_0, \quad u_0 \cdot n = 0 \text{ on } \partial\Omega \text{ and } u_0(x) \cdot n(x) = [\ell(0) + r(0) \wedge (x - x_0)] \cdot n(x) \text{ on } \partial\phi_0.$$

*Then for*

$$(154) \quad T = \min \left( T_1, \frac{C_*}{\|u_0\|_{C^{\lambda+1, r}(\mathcal{F}_0)} + \|(\ell, r)\|_{C^0([0, T_1]; \mathbb{R}^6)}} \right),$$

*the problem (8)-(9)-(12)-(13) (with  $\phi(t) := \tau^{\ell, r}(\phi_0)$  and  $\mathcal{F}(t) := \Omega \setminus \phi(t)$ ) admits a unique solution  $u$  in  $L^\infty(0, T; C^{\lambda+1, r}(\mathcal{F}(t)))$ , which is moreover in  $C_w([0, T]; C^{\lambda+1, r}(\mathcal{F}(t)))$ , and the same holds for  $\partial_t u$  instead of  $u$  with  $\lambda$  instead of  $\lambda + 1$ .*

**PROPOSITION 11.** – *There exists  $K > 0$  such that, for  $(\ell_1, r_1), (\ell_2, r_2)$  in  $C^0([0, T_1]; \mathbb{R}^6)$  satisfying (152),*

$$(155) \quad \ell_1(0) = \ell_2(0), \quad r_1(0) = r_2(0),$$

*and*

$$(156) \quad \|(\ell_1, r_1)\|_{C^0([0, T_1]; \mathbb{R}^6)}, \|(\ell_2, r_2)\|_{C^0([0, T_1]; \mathbb{R}^6)} \leq M,$$

*for any  $u_0 \in C^{\lambda+1, r}(\mathcal{F}_0)$  satisfying (153) (with both  $(\ell_1, r_1)$  and  $(\ell_2, r_2)$ ), the following holds. Call  $u_1, u_2$  the corresponding solutions given by Proposition 10 on  $[0, T]$  with*

$$(157) \quad T = \min \left( T_1, \frac{C_*}{\|u_0\|_{C^{\lambda+1, r}(\mathcal{F}_0)} + M} \right),$$

*and  $\eta^1$  and  $\eta^2$  the corresponding flows. One has*

$$(158) \quad \begin{aligned} \|\eta^1 - \eta^2\|_{L^\infty([0, T]; C^{\lambda+1, r}(\mathcal{F}_0))} + T \|u_1(t, \eta^1(t, x)) - u_2(t, \eta^2(t, x))\|_{L^\infty([0, T]; C^{\lambda+1, r}(\mathcal{F}_0))} \\ \leq KT \|(\ell_1, r_1) - (\ell_2, r_2)\|_{C^0([0, T_1]; \mathbb{R}^6)}. \end{aligned}$$



8.2.1. *Proof of Proposition 10*

*Step 1.* – Let  $(\ell, r)$  be fixed so that (152) holds. We deduce  $\tau(t)$ ,  $\mathcal{J}(t)$  and  $\mathcal{F}(t)$  as previously. We introduce  $(\Gamma_i)_{i=1\dots g}$  a family of smooth oriented loops in  $\mathcal{F}_0$  giving a homology basis of it.

We let

$$\mathcal{C} := \left\{ \eta \in C^0([0, T]; C^{\lambda+1, r}(\mathcal{F}_0; \mathbb{R}^3)) \middle/ \begin{array}{l} \text{i. } \forall t \in [0, T], \eta(t, \cdot) \text{ is a volume-preserving diffeomorphism from } \overline{\mathcal{F}_0} \text{ to } \overline{\mathcal{F}(t)}, \\ \text{sending } \partial\Omega \text{ to } \partial\Omega \text{ and } \partial\mathcal{J}_0 \text{ to } \partial\mathcal{J}(t), \\ \text{ii. } \|\eta - \text{Id}\|_{C^0([0, T]; C^{\lambda+1, r}(\mathcal{F}_0))} \leq \frac{1}{2} \end{array} \right\}.$$

Note that, due to the fact that  $\mathcal{F}(t)$  has the same volume as  $\mathcal{F}_0$ , the property i defining  $\mathcal{C}$  is equivalent to

$$(159) \quad \forall t \in [0, T], \det[\text{Jac}(\eta(t, \cdot))] = 1 \text{ on } \Omega \text{ and } \eta(t, \partial\Omega) = \partial\Omega, \eta(t, \partial\mathcal{J}_0) = \partial\mathcal{J}(t).$$

Hence it is not difficult to check that  $\mathcal{C}$  is closed for the  $C^0([0, T]; C^{\lambda+1, r}(\mathcal{F}_0; \mathbb{R}^3))$  distance.

Now we define  $\mathcal{T} = \mathcal{T}^{\ell, r} : \mathcal{C} \rightarrow \mathcal{C}$  as follows. Given  $\eta \in \mathcal{C}$ , we define  $\omega : [0, T] \times \mathcal{F}(t) \rightarrow \mathbb{R}^3$  by

$$(160) \quad \omega(t, x) = (\nabla\eta)(t, \eta^{-1}(t, x)) \cdot \omega_0(\eta^{-1}(t, x)),$$

where  $\omega_0 := \text{curl } u_0$  in  $\mathcal{F}_0$ . Note that when  $\eta$  is the flow of a vector field  $w$ , one has

$$(161) \quad \partial_t \omega + (w \cdot \nabla)\omega = (\omega \cdot \nabla)w.$$

Next we define  $u : [0, T] \times \mathcal{F}(t) \rightarrow \mathbb{R}^3$  by the following system

$$(162) \quad \begin{cases} \text{curl } u = \omega & \text{in } [0, T] \times \mathcal{F}(t), \\ \text{div } u = 0 & \text{in } [0, T] \times \mathcal{F}(t), \\ u \cdot n = 0 & \text{on } [0, T] \times \partial\Omega, \\ u(x) \cdot n = v(t) \cdot n & \text{on } [0, T] \times \partial\mathcal{J}(t), \\ \oint_{\eta(\Gamma_i)} u \cdot d\tau = \oint_{\Gamma_i} u_0 \cdot d\tau & \text{for all } i = 1 \dots g, \end{cases}$$

with  $v$  defined in (148).

Then we define the flow  $\tilde{\eta}(t, x)$  associated to  $u$ , which for each  $t$  sends  $\mathcal{F}_0$  to  $\mathcal{F}(t)$ . (In order to deal with the flow of a vector field on a fixed domain, for instance, extend  $u$  on  $\mathbb{R}^3$ , define the flow, and then restrict it to  $\mathcal{F}_0$ .)

Finally, we let

$$(163) \quad \mathcal{T}(\eta) := \tilde{\eta}.$$

*Step 2.* – Let us prove that, for proper  $T > 0$ ,  $\mathcal{F}$  has a unique fixed point by Banach-Picard's theorem. First, let us prove that  $\mathcal{F}(\mathcal{C}) \subset \mathcal{C}$ . That  $\mathcal{F}(\eta)$  satisfies the property i defining  $\mathcal{C}$  is a direct consequence of (159) and (162). Let us prove that for  $T \leq T_1$  small enough, the property ii holds. Given  $\eta \in \mathcal{C}$ , using Lemma 6 (and Remark 16) and (162), we see that for some constant  $C > 0$  depending on the geometry only:

$$(164) \quad \|u\|_{L^\infty(0,T;C^{\lambda+1,r}(\mathcal{F}(t)))} \leq C \left( \|u_0\|_{C^{\lambda+1,r}(\mathcal{F}_0)} + \|v\|_{C^0([0,T] \times \bar{\Omega})} \right).$$

Also, for some geometric constant, one has

$$\|v\|_{C^0([0,T] \times \bar{\Omega})} \leq C \|(\ell, r)\|_{C^0([0,T];\mathbb{R}^6)}.$$

Now, since  $\tilde{\eta}(t, \cdot) - \text{Id} = \int_0^t u \circ \tilde{\eta}$ , using Lemma 11, we see that

$$\|\tilde{\eta} - \text{Id}\|_{C^0([0,t];C^{\lambda+1,r}(\mathcal{F}_0))} \leq Ct \left( 1 + \|\tilde{\eta} - \text{Id}\|_{C^0([0,t];C^{\lambda+1,r}(\mathcal{F}_0))}^{\lambda+1} \right) \|u\|_{L^\infty(0,t;C^{\lambda+1,r}(\mathcal{F}(s)))}.$$

Hence if  $T > 0$  is such that  $CT \left( 1 + \left(\frac{1}{2}\right)^{\lambda+1} \right) \|u\|_{L^\infty(0,T;C^{\lambda+1,r}(\mathcal{F}(t)))} \leq 1/2$ , by a connectedness in time argument, we see that  $\tilde{\eta}$  satisfies the property ii. Hence there is a constant  $C_* > 0$  such that for

$$T \leq \frac{C_*}{\|u_0\|_{C^{\lambda+1,r}(\mathcal{F}_0)} + \|(\ell, r)\|_{C^0([0,T];\mathbb{R}^6)}},$$

$\mathcal{F}(\eta)$  satisfies property ii, so that  $\mathcal{F}(\eta) \in \mathcal{C}$ .

*Step 3.* – Let us now prove that  $\mathcal{F}$  is contractive for small  $T > 0$ . Given  $\eta_1, \eta_2 \in \mathcal{C}$ , we let  $\omega_1, \omega_2, u_1, u_2$ , etc. be the various objects associated to  $\eta_1$  and  $\eta_2$  in the construction of  $\mathcal{F}$ . We also define

$$(165) \quad \mathcal{U}_i(t, x) = u_i(t, \tilde{\eta}_i(t, x)) \quad \text{on } \mathcal{F}_0 \quad \text{for } t \in [0, T] \text{ and } i = 1, 2.$$

We have

$$\tilde{\eta}_1(t, x) - \tilde{\eta}_2(t, x) = \int_0^t [\mathcal{U}_1(s, x) - \mathcal{U}_2(s, x)] ds.$$

Now let us prove that for some geometric constant  $C > 0$ , we have

$$\begin{aligned} & \|\mathcal{U}_1 - \mathcal{U}_2\|_{L^\infty([0,T];C^{\lambda+1,r}(\mathcal{F}_0))} \\ & \leq C \left( \|u_0\|_{C^{\lambda+1,r}(\mathcal{F}_0)} + \|(\ell, r)\|_{C^0([0,T];\mathbb{R}^6)} \right) \|\eta_1 - \eta_2\|_{L^\infty([0,T];C^{\lambda+1,r}(\mathcal{F}_0))}. \end{aligned}$$

We follow [3]. For  $t \in [0, T]$ , we have, omitting the dependence on  $t$  to simplify the notations, using Lemma 6 and Lemma 11:

$$(166) \quad \begin{aligned} \|\mathcal{U}_1 - \mathcal{U}_2\|_{C^{\lambda+1,r}(\mathcal{F}_0)} &= \|u_1 \circ \eta_1 - u_2 \circ \eta_2\|_{C^{\lambda+1,r}(\mathcal{F}_0)} \\ &\leq C \|u_1 \circ \eta_1 \circ \eta_2^{-1} - u_2\|_{C^{\lambda+1,r}(\mathcal{F}(t))} \\ &\leq C \left( \|\text{curl}(u_1 \circ \eta_1 \circ \eta_2^{-1}) - \text{curl}(u_2)\|_{C^{\lambda,r}(\mathcal{F}(t))} \right. \\ &\quad + \|\text{div}(u_1 \circ \eta_1 \circ \eta_2^{-1}) - \text{div}(u_2)\|_{C^{\lambda,r}(\mathcal{F}(t))} \\ &\quad + \sum_{i=1}^g \left| \oint_{\eta_2(\Gamma_i)} (u_1 \circ \eta_1 \circ \eta_2^{-1} - u_2) \cdot d\tau \right| \\ &\quad \left. + \|(u_1 \circ \eta_1 \circ \eta_2^{-1}) \cdot n - u_2 \cdot n\|_{C^{\lambda+1,r}(\partial\mathcal{F}(t))} \right). \end{aligned}$$

Concerning the first term in the right hand side, using (160), (162) and Lemmas 11 and 12, we see that

$$\begin{aligned}
& \|\operatorname{curl}(u_1 \circ \eta_1 \circ \eta_2^{-1}) - \operatorname{curl}(u_2)\|_{C^{\lambda,r}(\mathcal{F}(t))} \\
& \leq \|\operatorname{curl}(u_1 \circ \eta_1 \circ \eta_2^{-1}) - (\operatorname{curl} u_1) \circ \eta_1 \circ \eta_2^{-1}\|_{C^{\lambda,r}(\mathcal{F}(t))} \\
& \quad + \|(\operatorname{curl} u_1) \circ \eta_1 \circ \eta_2^{-1} - (\operatorname{curl} u_2)\|_{C^{\lambda,r}(\mathcal{F}(t))} \\
& \leq C\|\eta_1 - \eta_2\|_{C^{\lambda+1,r}(\mathcal{F}_0)}\|u_1(t)\|_{C^{\lambda+1,r}(\mathcal{F}(t))} \\
& \quad + C\|(\operatorname{curl} u_1) \circ \eta_1 - (\operatorname{curl} u_2) \circ \eta_2\|_{C^{\lambda,r}(\mathcal{F}_0)} \\
& \leq C(\|\omega_0\|_{C^{\lambda,r}(\mathcal{F}_0)} + \|u_1(t)\|_{C^{\lambda+1,r}(\mathcal{F}(t))})\|\eta_1 - \eta_2\|_{C^{\lambda+1,r}(\mathcal{F}_0)}.
\end{aligned}$$

The second term in (166) is treated likewise (this is even slightly simpler since  $\operatorname{div} u_1 = \operatorname{div} u_2 = 0$ ); hence we can bound it by

$$(167) \quad C\|u_1(t)\|_{C^{\lambda+1,r}(\mathcal{F}(t))}\|\eta_1 - \eta_2\|_{C^{\lambda+1,r}(\mathcal{F}_0)}.$$

Using (162), we see that the third term in (166) can be bounded by (167) as well. Using (162), we see that the last term can be bounded by

$$C\|v\|_{C^0([0,T] \times \bar{\Omega})}\|\eta_1 - \eta_2\|_{C^{\lambda+1,r}(\mathcal{F}_0)},$$

since  $\|\cdot\|_{C^0(\bar{\Omega})}$  and  $\|\cdot\|_{C^{\lambda+1,r}(\Omega)}$  are equivalent as long as  $v$  is concerned. Hence, using (164), we get

$$(168) \quad \|\mathcal{U}_1 - \mathcal{U}_2\|_{C^{\lambda+1,r}(\mathcal{F}_0)} \leq C(\|u_0\|_{C^{\lambda+1,r}(\mathcal{F}_0)} + \|(\ell, r)\|_{C^0([0,T]; \mathbb{R}^6)})\|\eta_1 - \eta_2\|_{C^{\lambda+1,r}(\mathcal{F}_0)},$$

and it follows that for some  $T$  of the form (154), the operator  $\mathcal{F}$  is contractive. Now a fixed point in  $\mathcal{C}$  gives a solution of the Euler equation and reciprocally. This comes from (161) which gives for a fixed point

$$\operatorname{curl} \left( \frac{\partial u}{\partial t} + (u \cdot \nabla)u \right) = 0 \text{ in } (0, T) \times \mathcal{F}(t),$$

and the fact that:

$$\frac{d}{dt} \int_{\eta(\Gamma_i)} u \cdot d\tau = \int_{\eta(\Gamma_i)} \left( \frac{\partial u}{\partial t} + (u \cdot \nabla)u \right) \cdot d\tau = 0 \text{ in } (0, T).$$

This proves the claim. Note that  $\eta \in C^0([0, T]; C^{\lambda+1,r}(\mathcal{F}_0))$  and  $u \circ \eta \in C^0([0, T]; C^{\lambda+1,r}(\mathcal{F}_0))$  involve  $u \in L^\infty(0, T; C^{\lambda+1,r}(\mathcal{F}(t)))$ ; the weak continuity then follows from the continuity into a weaker space, for instance  $u \in C^0([0, T]; C^{\lambda,r}(\mathcal{F}(t)))$ .  $\square$

8.2.2. *Proof of Proposition 11.* – Given  $(\ell_1, r_1)$  and  $(\ell_2, r_2)$  satisfying (155) and (156), we introduce the respective fixed points  $\eta_1$  and  $\eta_2$  in  $C^0([0, T]; C^{\lambda+1,r}(\mathcal{F}_0))$  of the operators  $\mathcal{F}^{\ell_1, r_1}$  and  $\mathcal{F}^{\ell_2, r_2}$  defined above (as well as the corresponding objects  $\phi_i(t)$ ,  $\mathcal{F}_i(t)$ ,  $u_i$ ,  $\mathcal{U}_i$ , etc.), defined on  $[0, T]$  with  $T$  introduced in (157).

We proceed as previously (again, we omit to write the dependence on  $t$  to simplify the notations):

$$\begin{aligned} \|u_1 \circ \eta_1 - u_2 \circ \eta_2\|_{C^{\lambda+1,r}(\mathcal{F}_0)} &\leq C \|u_1 \circ \eta_1 \circ \eta_2^{-1} - u_2\|_{C^{\lambda+1,r}(\mathcal{F}_2(t))} \\ &\leq C \left( \|\operatorname{curl}(u_1 \circ \eta_1 \circ \eta_2^{-1}) - \operatorname{curl}(u_2)\|_{C^{\lambda,r}(\mathcal{F}_2(t))} \right. \\ &\quad + \|\operatorname{div}(u_1 \circ \eta_1 \circ \eta_2^{-1}) - \operatorname{div}(u_2)\|_{C^{\lambda,r}(\mathcal{F}_2(t))} \\ &\quad + \sum_{i=1}^g \left| \oint_{\Gamma_i} (u_1 \circ \eta_1 \circ \eta_2^{-1} - u_2) \cdot d\tau \right| \\ &\quad \left. + \|(u_1 \circ \eta_1 \circ \eta_2^{-1}) \cdot n - u_2 \cdot n\|_{C^{\lambda+1,r}(\partial\mathcal{F}_2(t))} \right). \end{aligned}$$

Using Lemma 12, we deduce

$$\begin{aligned} \|\operatorname{curl}(u_1 \circ \eta_1 \circ \eta_2^{-1}) - \operatorname{curl}(u_2)\|_{C^{\lambda,r}(\mathcal{F}_2(t))} \\ \leq C (\|u_1\|_{C^{\lambda+1,r}(\mathcal{F}_1(t))} + \|\omega_0\|_{C^{\lambda,r}(\mathcal{F}_0)}) \|\eta_1 - \eta_2\|_{C^{\lambda+1,r}(\mathcal{F}_0)}, \\ \|\operatorname{div}(u_1 \circ \eta_1 \circ \eta_2^{-1}) - \operatorname{div}(u_2)\|_{C^{\lambda,r}(\mathcal{F}_2(t))} \leq C \|u_1\|_{C^{\lambda+1,r}(\mathcal{F}_1(t))} \|\eta_1 - \eta_2\|_{C^{\lambda+1,r}(\mathcal{F}_0)}. \end{aligned}$$

And it is not difficult to see that

$$\begin{aligned} \sum_{i=1}^g \left| \oint_{\Gamma_i} (u_1 \circ \eta_1 \circ \eta_2^{-1} - u_2) \cdot d\tau \right| + \|(u_1 \circ \eta_1 \circ \eta_2^{-1}) \cdot n - u_2 \cdot n\|_{C^{\lambda+1,r}(\partial\mathcal{F}_2(t))} \\ \leq C (\|u_1\|_{C^{\lambda+1,r}(\mathcal{F}_1(t))} \|\eta_1 - \eta_2\|_{C^{\lambda+1,r}(\mathcal{F}_0)} + \|(\ell_1, r_1) - (\ell_2, r_2)\|_{\mathbb{R}^6}). \end{aligned}$$

Hence we have

$$\begin{aligned} \|u_1 \circ \eta_1 - u_2 \circ \eta_2\|_{C^{\lambda+1,r}(\mathcal{F}_0)} \\ \leq C (\|u_1\|_{C^{\lambda+1,r}(\mathcal{F}_1(t))} + \|\omega_0\|_{C^{\lambda,r}(\mathcal{F}_0)}) \|\eta_1 - \eta_2\|_{C^{\lambda+1,r}(\mathcal{F}_0)} + C \|(\ell_1, r_1) - (\ell_2, r_2)\|_{\mathbb{R}^6}. \end{aligned}$$

Since

$$\eta_1(t) - \eta_2(t) = \int_0^t [u_1 \circ \eta_1 - u_2 \circ \eta_2],$$

the conclusion easily follows from Gronwall's lemma.

**REMARK 17.** – *The operator  $\mathcal{F}$  defined above can be defined for any initial datum  $u_0$ , with  $u_0$  divergence-free, tangential to  $\partial\Omega$ , and satisfying the compatibility condition:*

$$u_0 \cdot n = (\ell(0) + r(0) \wedge (x - x_0)) \text{ on } \partial\phi_0.$$

*Equivalently, we could associate an operator  $\mathcal{E}$  to any initial data  $(\omega_0, \lambda_0^1, \dots, \lambda_0^g)$  in  $C^{\lambda,r}(\mathcal{F}_0) \times \mathbb{R}^g$ , and reconstruct  $u_0$  satisfying the compatibility conditions by*

$$(169) \quad \begin{cases} \operatorname{curl} u_0 = \omega_0 & \text{in } \mathcal{F}_0, \\ \operatorname{div} u_0 = 0 & \text{in } \mathcal{F}_0, \\ u_0 \cdot n = 0 & \text{on } \partial\Omega, \\ u_0(x) \cdot n = (\ell(0) + r(0) \wedge (x - x_0)) \cdot n & \text{on } \partial\phi_0, \\ \oint_{\Gamma_i} u_0 \cdot d\tau = \lambda_0^i & \text{for all } i = 1 \dots g. \end{cases}$$

Doing so, Proposition 11 extends to  $(\ell_1, r_1)$  and  $(\ell_2, r_2)$  which do no longer satisfy (155). In that case, (158) compares solutions with initial velocity fields  $u_0^1$  and  $u_0^2$  given by (169) with  $(\ell_1(0), r_1(0))$  and  $(\ell_2(0), r_2(0))$ , respectively.

### 8.3. With a moving solid

8.3.1. *Proof of Theorem 4.* – Here we prove Theorem 4. Again we rely on a Banach-Picard fixed point strategy.

*Step 1.* – We introduce

$$\mathcal{D} := \left\{ (\ell, r) \in C^0([0, T]; \mathbb{R}^6) \middle/ \begin{array}{l} \text{i. } \tau^{\ell, r} \text{ satisfies } d(\tau^{\ell, r}(t)(\phi_0), \partial\Omega) \geq \frac{d}{3}, \\ \text{ii. } \|(\ell, r) - (\ell_0, r_0)\|_{C^0([0, T]; \mathbb{R}^6)} \leq \|u_0\|_{C^{\lambda+1, r}} + \|(\ell_0, r_0)\|_{\mathbb{R}^6} \end{array} \right\}.$$

REMARK 18. – As we follow from the proof, we could replace ii by

$$\text{ii. } \|(\ell, r) - (\ell_0, r_0)\|_{C^0([0, T]; \mathbb{R}^6)} \leq C,$$

for any positive constant  $C > 0$ .

Now we construct an operator  $\mathcal{E}$  on  $\mathcal{D}$  in the following way. To  $(\ell, r) \in \mathcal{D}$ , we associate  $Q(t)$ ,  $\mathcal{J}(t)$  and  $\mathcal{F}(t)$  defined from  $(\ell, r)$ . Next we associate the fixed point  $\eta \in C^0([0, T]; C^{\lambda+1, r}(\mathcal{F}_0))$  of the operator  $\mathcal{F}^{\ell, r}$  defined in Paragraph 8.2 with  $T$  of the form (154). Note that due to properties i and ii in the definition of  $\mathcal{D}$  and Proposition 10, there is a time

$$T = \frac{C_*}{\|u_0\|_{C^{\lambda+1, r}(\mathcal{F}_0)} + \|(\ell_0, r_0)\|_{\mathbb{R}^6}},$$

such that  $\eta^{\ell, r}$  is defined on  $[0, T_*]$ , uniformly in  $(\ell, r) \in \mathcal{D}$ . Together with this flow  $\eta$ , we will consider the various functions  $u$ ,  $\mathcal{U}$ , etc. defined on  $[0, T]$ .

Define  $\mathcal{J}$ ,  $(\Phi_i)_{i=1\dots 6}$  and  $\mu$  by

$$(170) \quad \mathcal{J}(t) = Q(t)\mathcal{J}_0Q^*(t) \text{ on } [0, T],$$

$$(171) \quad \begin{cases} -\Delta\Phi_i = 0 & \text{for } x \in \mathcal{F}(t), \\ \frac{\partial\Phi_i}{\partial n} = 0 & \text{for } x \in \partial\Omega, \\ \frac{\partial\Phi_i}{\partial n} = K_i & \text{for } x \in \partial\mathcal{J}(t), \\ \int_{\mathcal{F}(t)} \Phi_i dx = 0, \end{cases}$$

where

$$(172) \quad K_i := \begin{cases} n_i & \text{if } i = 1, 2, 3, \\ [(x - x_B) \wedge n]_{i-3} & \text{if } i = 4, 5, 6, \end{cases}$$

and

$$(173) \quad \begin{cases} -\Delta\mu = \operatorname{tr}\{\nabla u \cdot \nabla u\} & \text{for } x \in \mathcal{F}(t), \\ \frac{\partial\mu}{\partial n} = -\nabla^2 \rho_\Omega(u, u) & \text{for } x \in \partial\Omega, \\ \frac{\partial\mu}{\partial n} = \nabla^2 \rho_B \{u - v, u - v\} - n \cdot (r \wedge (2u - v - \ell)), & \text{for } x \in \partial\mathcal{J}(t), \\ \int_{\mathcal{F}(t)} \mu \, dx = 0. \end{cases}$$

Introduce

$$(174) \quad \mathcal{M}(t) := \mathcal{M}_1(t) + \mathcal{M}_2(t) := \begin{bmatrix} m \operatorname{Id}_3 & 0 \\ 0 & \mathcal{J} \end{bmatrix} + \left[ \int_{\mathcal{F}(t)} \nabla\Phi_i \cdot \nabla\Phi_j \, dx \right]_{i,j \in \{1, \dots, 6\}},$$

and then define  $\mathcal{U}(\ell, r) := (\tilde{\ell}, \tilde{r})$  as

$$(175) \quad \begin{bmatrix} \tilde{\ell} \\ \tilde{r} \end{bmatrix} = \begin{bmatrix} \ell_0 \\ r_0 \end{bmatrix} + \int_0^t \mathcal{M}^{-1}(s) \left\{ \begin{bmatrix} 0 \\ \mathcal{J}(s)r(s) \wedge r(s) \end{bmatrix} + \left[ \int_{\mathcal{F}(t)} \nabla\mu \cdot \nabla\Phi_i \, dx \right]_{i \in \{1, \dots, 6\}} \right\} ds.$$

*Step 2.* – We now show that for suitable  $T$ , the operator  $\mathcal{U}$  maps  $\mathcal{D}$  into itself. Then we will prove that it is contractive.

First, we see from (164) that we have the following bound on  $u = u^{\ell, r}$ , when  $(\ell, r) \in \mathcal{D}$ :

$$(176) \quad \|u\|_{L^\infty(0, T; C^{\lambda+1, r}(\mathcal{F}(t)))} \leq C (\|u_0\|_{C^{\lambda+1, r}(\mathcal{F}_0)} + \|(\ell_0, r_0)\|_{\mathbb{R}^6}).$$

Also, the following bound is immediate from ii:

$$(177) \quad \|v\|_{C^0([0, T])} \leq C (\|u_0\|_{C^{\lambda+1, r}(\mathcal{F}_0)} + \|(\ell_0, r_0)\|_{\mathbb{R}^6}).$$

It follows easily using Lemma 6 that for some geometric constant  $C > 0$ :

$$(178) \quad \|\nabla\mu\|_{L^\infty(0, T; C^{\lambda+1, r}(\mathcal{F}(t)))} \leq C (\|u_0\|_{C^{\lambda+1, r}(\mathcal{F}_0)} + \|(\ell_0, r_0)\|_{\mathbb{R}^6})^2.$$

Lemma 6 also yields that

$$\|\nabla\Phi_i\|_{L^\infty(0, T; C^{\lambda+1, r}(\mathcal{F}(t)))} \leq C.$$

Next, the matrix  $Q(t)$  is bounded since it is orthogonal, so  $\mathcal{J}(t)$  is bounded as well by a geometric constant. Finally the matrix  $\mathcal{M}_2(t)$  being symmetric positive, the matrix  $\mathcal{M}^{-1}$  is also bounded by a geometric constant. We deduce that we have the following estimate uniformly on  $\mathcal{D}$ :

$$\|(\tilde{\ell}, \tilde{r}) - (\ell_0, r_0)\|_{C^0([0, T]; \mathbb{R}^6)} \leq CT (\|u_0\|_{C^{\lambda+1, r}} + \|(\ell_0, r_0)\|_{\mathbb{R}^6})^2.$$

It follows easily that for some geometric constant  $C_* > 0$ , one has  $\mathcal{U}(\mathcal{D}) \subset \mathcal{D}$  provided that

$$(179) \quad T \leq \frac{C_*}{\|u_0\|_{C^{\lambda+1, r}(\mathcal{F}_0)} + \|(\ell_0, r_0)\|_{\mathbb{R}^6}}.$$

*Step 3.* – Let us now prove that for  $T$  of the form (179), the operator  $\mathcal{U}$  is contractive. Let  $(\ell_1, r_1)$  and  $(\ell_2, r_2)$  in  $\mathcal{D}$ . As previously we denote with an index 1 or 2 the objects associated to these couples above (except for  $\Phi_i$  where 1 and 2 come as an exponent).

It is a straightforward consequence of Proposition 11 that for some constant  $C > 0$ , one has

$$(180) \quad \begin{aligned} & \|\eta_1 - \eta_2\|_{L^\infty([0,T];C^{\lambda+1,r}(\mathcal{G}_0))} + T\|u_1(t, \eta_1(t, x)) - u_2(t, \eta_2(t, x))\|_{L^\infty([0,T];C^{\lambda+1,r}(\mathcal{G}_0))} \\ & \leq CT\|(\ell_1, r_1) - (\ell_2, r_2)\|_{C^0([0,T];\mathbb{R}^6)}. \end{aligned}$$

Also, the following bound is immediate:

$$(181) \quad \|v_1 - v_2\|_{C^0([0,T];\mathbb{R}^6)} \leq C\|(\ell_1, r_1) - (\ell_2, r_2)\|_{C^0([0,T];\mathbb{R}^6)}.$$

Now proceeding as previously, using Lemma 6, we infer that for  $t \in [0, T]$ :

$$(182) \quad \begin{aligned} & \|(\nabla\mu_1) \circ \eta_1 - (\nabla\mu_2) \circ \eta_2\|_{C^{\lambda+1,r}(\mathcal{G}_0)} \leq \|(\nabla\mu_1) \circ \eta_1 \circ \eta_2^{-1} - (\nabla\mu_2)\|_{L^\infty(0,T;\mathcal{G}_2(t))} \\ & \leq C \left( \|\operatorname{curl}(\nabla\mu_1 \circ \eta_1 \circ \eta_2^{-1}) - \operatorname{curl}(\nabla\mu_2)\|_{C^{\lambda,r}(\mathcal{G}_2(t))} \right. \\ & \quad + \|\operatorname{div}(\nabla\mu_1 \circ \eta_1 \circ \eta_2^{-1}) - \operatorname{div}(\nabla\mu_2)\|_{C^{\lambda,r}(\mathcal{G}_2(t))} \\ & \quad + \sum_{i=1}^g \left| \int_{\Gamma_i} (\nabla\mu_1 \circ \eta_1 \circ \eta_2^{-1} - \nabla\mu_2) \cdot d\tau \right| \\ & \quad \left. + \|(\nabla\mu_1 \circ \eta_1 \circ \eta_2^{-1}) \cdot n - \nabla\mu_2 \cdot n\|_{C^{\lambda+1,r}(\partial\mathcal{G}_2(t))} \right). \end{aligned}$$

For what concerns the second term in the right hand side, we have, using Lemma 11, Lemma 12 and (178),

$$\begin{aligned} & \|\operatorname{div}(\nabla\mu_1 \circ \eta_1 \circ \eta_2^{-1}) - \operatorname{div} \nabla\mu_2\|_{C^{\lambda,r}(\mathcal{G}_2(t))} \\ & \leq \|\operatorname{div}(\nabla\mu_1 \circ \eta_1 \circ \eta_2^{-1}) - (\operatorname{div} \nabla\mu_1) \circ \eta_1 \circ \eta_2^{-1}\|_{C^{\lambda,r}(\mathcal{G}_2(t))} \\ & \quad + \|(\operatorname{div} \nabla\mu_1) \circ \eta_1 \circ \eta_2^{-1} - \operatorname{div} \nabla\mu_2\|_{C^{\lambda,r}(\mathcal{G}_2(t))} \\ & \leq C \left\{ [\|u_0\|_{C^{\lambda+1,r}(\mathcal{G}_0)} + \|(\ell_0, r_0)\|_{\mathbb{R}^6}]^2 \|\eta_1 - \eta_2\|_{C^0([0,T];C^{\lambda+1,r}(\mathcal{G}_0))} \right. \\ & \quad \left. + \|\operatorname{div}(\nabla\mu_1) \circ \eta_1 - (\operatorname{div} \nabla\mu_2) \circ \eta_2\|_{C^{\lambda,r}(\mathcal{G}_0)} \right\}. \end{aligned}$$

Now using (173), (176) and  $(\nabla u_i) \circ \eta_i = \nabla(u_i \circ \eta_i) \cdot (\nabla \eta_i)^{-1}$ , we see that

$$(183) \quad \begin{aligned} & \|\operatorname{div}(\nabla\mu_1) \circ \eta_1 - \operatorname{div}(\nabla\mu_2) \circ \eta_2\|_{C^{\lambda,r}(\mathcal{G}_0)} \\ & = \|\operatorname{tr}\{\nabla u_1 \cdot \nabla u_1\} \circ \eta_1 - \operatorname{tr}\{\nabla u_2 \cdot \nabla u_2\} \circ \eta_2\|_{C^{\lambda,r}(\mathcal{G}_0)} \\ & \leq C \left[ \|u_0\|_{C^{\lambda+1,r}(\mathcal{G}_0)} + \|(\ell_0, r_0)\|_{\mathbb{R}^6} \right]^2 \|\eta_1 - \eta_2\|_{C^0([0,T];C^{\lambda+1,r}(\mathcal{G}_0))} \\ & \quad + C \left[ \|u_0\|_{C^{\lambda+1,r}(\mathcal{G}_0)} + \|(\ell_0, r_0)\|_{\mathbb{R}^6} \right] \|u_1 \circ \eta_1 - u_2 \circ \eta_2\|_{C^0([0,T];C^{\lambda+1,r}(\mathcal{G}_0))}. \end{aligned}$$

Using (180), we deduce that for  $T$  of the form (179), we have

$$(184) \quad \|\operatorname{div}(\nabla\mu_1) \circ \eta_1 - \operatorname{div}(\nabla\mu_2) \circ \eta_2\|_{C^{\lambda,r}(\mathcal{G}_0)} \leq C\|(\ell_1, r_1) - (\ell_2, r_2)\|_{C^0([0,T];\mathbb{R}^6)}.$$

The first term in (182) can be also estimated by the right hand side of (184), using Lemmas 11 and 12 (it is simpler here since  $\operatorname{curl}(\nabla\mu_i) = 0$ ). The third term in (182) can also be estimated

by the first term in the right hand side of (183), using Lemma 12. The last term is estimated likewise, using (176), (177) and (181). Hence we get that

$$\|(\nabla\mu_1) \circ \eta_1 - (\nabla\mu_2) \circ \eta_2\|_{C^{\lambda+1,r}(\mathcal{G}_0)} \leq C\|(\ell_1, r_1) - (\ell_2, r_2)\|_{C^0([0,T];\mathbb{R}^6)}.$$

Also, it is again a consequence of Lemma 12 that

$$\begin{aligned} \|(\nabla\Phi_i^1) \circ \eta_1 - (\nabla\Phi_i^2) \circ \eta_2\|_{L^\infty(0,T;C^{\lambda+1,r}(\mathcal{G}_0))} \\ \leq C \left[ \|u_0\|_{C^{\lambda+1,r}(\mathcal{G}_0)} + \|(\ell_0, r_0)\|_{\mathbb{R}^6} \right]^2 \|\eta_1 - \eta_2\|_{C^0([0,T];\mathbb{R}^6)}. \end{aligned}$$

This involves that the integrand in (175) is Lipschitz with respect to  $(\ell, r)$ : for instance, using that  $\eta_1$  and  $\eta_2$  are volume-preserving:

$$\begin{aligned} \left| \int_{\mathcal{G}_1(t)} \nabla\mu_1 \cdot \nabla\Phi_i^1 dx - \int_{\mathcal{G}_2(t)} \nabla\mu_2 \cdot \nabla\Phi_i^2 dx \right| = \\ \left| \int_{\mathcal{G}_0} (\nabla\mu_1) \circ \eta_1 \cdot (\nabla\Phi_i^1) \circ \eta_1 dx - \int_{\mathcal{G}_0} (\nabla\mu_2) \circ \eta_2 \cdot (\nabla\Phi_i^2) \circ \eta_2 dx \right|, \end{aligned}$$

and the claim follows. More precisely, we have

$$\begin{aligned} (185) \quad & \|(\tilde{\ell}_1, \tilde{r}_1) - (\tilde{\ell}_2, \tilde{r}_2)\|_{C^0([0,T])} \\ & \leq CT \left\{ \left[ \|u_0\|_{C^{\lambda+1,r}(\mathcal{G}_0)} + \|(\ell_0, r_0)\|_{\mathbb{R}^6} \right]^2 \|\eta_1 - \eta_2\|_{C^0([0,T];C^{\lambda+1,r}(\mathcal{G}_0))} \right. \\ & \quad \left. + \left[ \|u_0\|_{C^{\lambda+1,r}(\mathcal{G}_0)} + \|(\ell_0, r_0)\|_{\mathbb{R}^6} \right] \|(\ell_1, r_1) - (\ell_2, r_2)\|_{C^0([0,T];\mathbb{R}^6)} \right\}. \end{aligned}$$

Hence using Proposition 11, we see that for some  $T$  of the form (179) with a geometric constant  $C_*$ , the operator  $\mathcal{E}$  is contractive.

*Step 4.* – Hence, the operator  $\mathcal{E}$  has a unique fixed point in  $\mathcal{D}$ , which proves the existence part of Theorem 4. For what concerns uniqueness: if we are given a solution  $(\ell, r, u)$  of the system, then it is easy to see that for  $T$  sufficiently small, one has  $(\ell, r) \in \mathcal{D}$ , and the flow of  $u$  belongs to  $\mathcal{E}$ . Then, because of the uniqueness in Proposition 10,  $(\ell, r)$  must be a fixed point of the operator  $\mathcal{E}$ , which proves that it must be equal to the one that we have constructed.

*Step 5.* – It remains to prove that the velocity field in the solution  $(\ell, r, u)$  that we constructed belongs to the space  $C([0, T]; C^{\lambda+1,r'}(\mathcal{F}(t)))$  in the sense of Remark 7. Let  $\rho > 0$  such that  $\text{dist}(\mathcal{J}(t), \partial\Omega) \geq 3\rho$  in  $[0, T]$ . Let

$$\mathcal{G}_\rho := \{x \in \mathbb{R}^3 \setminus \mathcal{J}_0, d(x, \partial\mathcal{J}_0) < \rho\} \text{ and } \mathcal{H}_\rho := \{x \in \bar{\Omega}, d(x, \partial\Omega) < \rho\}.$$

Let  $\pi_{\mathcal{J}}$  (resp.  $\pi_{\bar{\Omega}}$ ) be a continuous linear extension operator from functions defined in  $\mathcal{G}_\rho$  (resp.  $\mathcal{H}_\rho$ ) to function defined in  $\bar{\mathcal{G}}_\rho \cup \mathcal{J}_0$  (resp.  $\mathcal{H}_\rho \cup (\mathbb{R}^3 \setminus \Omega)$ ) and supported in some ball  $\bar{B}(0, M)$ , which sends  $C^{\lambda+1,\alpha}(\mathcal{G}_\rho)$  to  $C^{\lambda+1,\alpha}(\bar{\mathcal{G}}_\rho \cup \mathcal{J}_0)$  (resp.  $C^{\lambda+1,\alpha}(\mathcal{H}_\rho)$  to  $C^{\lambda+1,\alpha}(\bar{\mathcal{H}}_\rho \cup (\mathbb{R}^3 \setminus \Omega))$ , for all  $\alpha \in (0, 1)$ . (The construction of such a “universal” extension operator is classical, see [22].) For any  $\tau \in D_{2\rho}$  (defined in 105), define the extension operator  $\pi_{\mathcal{J}}^\tau$ :

$$\pi_{\mathcal{J}}^\tau : C^{\lambda+1,\alpha}(\tau(\bar{\mathcal{G}}_\rho)) \rightarrow C^{\lambda+1,\alpha}(\tau(\bar{\mathcal{G}}_\rho) \cup \tau(\mathcal{J}_0)) \text{ by } \pi_{\mathcal{J}}^\tau := \tau \circ \pi \circ \tau^{-1}.$$



Now we deduce the extension operator  $\tilde{\pi}^\tau : C^{\lambda+1,\alpha}(\Omega \setminus \tau(\mathcal{J})) \rightarrow C^{\lambda+1,\alpha}(\mathbb{R}^3)$  as follows. For  $f \in C^{\lambda+1,\alpha}(\Omega \setminus \tau(\mathcal{J}))$ , we let  $\tilde{\pi}^\tau[f](x)$  equal to  $\pi_{\mathcal{J}}^\tau[f](x)$  in  $\tau(\mathcal{J})$ , to  $f(x)$  in  $\Omega \setminus \tau(\mathcal{J})$  and to  $\pi_{\overline{\Omega}}[f](x)$  in  $\mathbb{R}^3 \setminus \Omega$ . Now we define

$$\tilde{u}(t, \cdot) = \tilde{\pi}^{\tau(t)}[u(t, \cdot)] \text{ in } [0, T] \times \mathbb{R}^3.$$

Let us now check that the function  $\tilde{u}$  is in  $C([0, T]; C^{\lambda+1,r'}(\mathbb{R}^3))$  for  $r' \in (0, r)$ . From the construction, we see that it suffices to prove that in  $[0, T]$ ,

$$\|u(t, x) - u(s, x)\|_{C^{\lambda+1,r'}(\mathcal{H}_\rho)} + \|u(t, \tau(t)(x)) - u(s, \tau(s)(x))\|_{C^{\lambda+1,r'}(\mathcal{G}_\rho)} \rightarrow 0 \text{ as } |t - s| \rightarrow 0.$$

Equivalently, it suffices that

$$\begin{aligned} & \|u(t, \eta(s, x)) - u(s, \eta(s, x))\|_{C^{\lambda+1,r'}(\eta(s)^{-1}(\mathcal{H}_\rho))} \\ & + \|u(t, \tau(t) \circ \tau^{-1}(s)(\eta(s, x))) - u(s, \eta(s)(x))\|_{C^{\lambda+1,r'}(\eta(s)^{-1} \circ \tau(s)(\mathcal{G}_\rho))} \rightarrow 0. \end{aligned}$$

But this follows from the facts that  $u \in L^\infty(0, T; C^{\lambda+1,r}(\mathcal{F}(t)))$ ,  $\eta \in C([0, T]; C^{\lambda+1,r}(\mathcal{F}_0))$ ,  $\tau \in C([0, T]; SE(3))$  and

$$\|u(t, \eta(t, x)) - u(s, \eta(s, x))\|_{C^{\lambda+1,r}(\mathcal{F}_0)} \rightarrow 0 \text{ as } |t - s| \rightarrow 0.$$

Now, that  $\tilde{u}$  belongs to  $C_w([0, T]; C^{\lambda+1,r}(\mathbb{R}^3))$  is an automatic consequence of the fact that it belongs to  $C([0, T]; C^{\lambda+1,r'}(\mathbb{R}^3))$  and to  $L^\infty(0, T; C^{\lambda+1,r}(\mathbb{R}^3))$ . Finally, using the equations we infer that  $(x_B, r) \in C^2((-T, T)) \times C^1((-T, T))$ ,  $\partial_t u \in C_w((-T, T); C^{\lambda,r}(\mathcal{F}(t)))$  and  $\partial_t u \in C((-T, T); C^{\lambda,r'}(\mathcal{F}(t)))$ , for  $r' \in (0, r)$ .

**REMARK 19.** – *It can be seen following the lines of the proof that  $T$  can be chosen in terms of  $\|u_0\|_{C^{1,r}} + |\ell_0| + |r_0|$  only. It suffices to use tame estimates:*

$$\|fg\|_{C^{\lambda,r}} \leq C(\|f\|_{C^{0,r}} \|g\|_{C^{\lambda,r}} + \|f\|_{C^{\lambda,r}} \|g\|_{C^{0,r}}).$$

**8.3.2. Proof of Proposition 1.** – Consider  $(\ell^1, r^1, u^1)$ ,  $(\ell^2, r^2, u^2)$ ,  $\eta_1$  and  $\eta_2$  as in the statement. Introduce  $u^m$  as the solution given by Proposition 10, with the solid movement given by  $(\ell_1, r_1)$  and where the initial condition  $u_0^m$  is given by (169) associated to  $(\ell_0^1, r_0^1, \omega_0^2, \oint_{\Gamma_1} u_0^2 \cdot d\tau, \dots, \oint_{\Gamma_g} u_0^2 \cdot d\tau)$ . Call  $\eta_m$  the corresponding fluid flow.

Consider the operator  $\mathcal{U}_2$  (resp.  $\mathcal{U}_1$ ) associated to the initial datum  $(\ell_0^2, r_0^2, u_0^2)$  (resp.  $(\ell_0^1, r_0^1, u_0^1)$ ). Since  $\mathcal{U}_2$  is contractive and has  $(\ell_2, r_2)$  as its fixed point, we have

$$\|(\ell^1, r^1) - (\ell^2, r^2)\|_{C^0([0,T];\mathbb{R}^6)} \lesssim \|(\ell^1, r^1) - \mathcal{U}_2(\ell^1, r^1)\|_{C^0([0,T];\mathbb{R}^6)}.$$

(For instance, we use Remark 18 with  $C$  large enough, depending on  $R$ , so that both  $(\ell^1, r^1)$  and  $(\ell^2, r^2)$  belong to  $\mathcal{D}$ .)

Note that when computing  $\mathcal{U}_2(\ell_1, r_1)$  by the formulas (170)-(175), the fluid domain is exactly  $\mathcal{F}_1(t)$ . Consequently when computing (175) corresponding to  $\mathcal{U}_2(\ell_1, r_1)$  and comparing with (175) corresponding to  $\mathcal{U}_1(\ell_1, r_1) = (\ell_1, r_1)$ , the only differences concern the term  $\nabla\mu$  and the initial data  $(\ell_0, r_0)$ . Hence proceeding as for (185), one deduces that

$$\begin{aligned} & \|(\ell^1, r^1) - (\ell^2, r^2)\|_{C^0([0,T];\mathbb{R}^6)} \\ (186) \quad & \leq C \left( \|(\ell_0^1, r_0^1) - (\ell_0^2, r_0^2)\|_{\mathbb{R}^6} + \|\eta_m - \eta_1\|_{L^\infty([0,T]; C^{\lambda+1,r}(\mathcal{F}_0))} \right. \\ & \left. + \|u_m(t, \eta_m(t, x)) - u_1(t, \eta_1(t, x))\|_{L^\infty([0,T]; C^{\lambda+1,r}(\mathcal{F}_0))} \right). \end{aligned}$$

From Proposition 11 and Remark 17, we deduce

$$(187) \quad \begin{aligned} & \|\eta_m - \eta_2\|_{L^\infty([0,T];C^{\lambda+1,r}(\mathcal{G}_0))} + T\|u_m(t, \eta_m(t, x)) - u_2(t, \eta_2(t, x))\|_{L^\infty([0,T];C^{\lambda+1,r}(\mathcal{G}_0))} \\ & \leq KT\|(\ell_1, r_1) - (\ell_2, r_2)\|_{C^0([0,T];\mathbb{R}^6)}. \end{aligned}$$

Since  $\mathcal{F}^{\ell^1, r^1}$  (associated to initial data  $(\omega_0^1, \oint_{\Gamma_1} u_0^1 \cdot d\tau, \dots, \oint_{\Gamma_g} u_0^1 \cdot d\tau)$ ) is contractive, and using (168), we see that for some  $C > 0$ ,

$$(188) \quad \begin{aligned} & \|\eta_m - \eta_1\|_{L^\infty([0,T];C^{\lambda+1,r}(\mathcal{G}_0))} + \|u_m(t, \eta_m(t, x)) - u_1(t, \eta_1(t, x))\|_{L^\infty([0,T];C^{\lambda+1,r}(\mathcal{G}_0))} \\ & \leq C\|\mathcal{F}^{\ell^1, r^1}(\eta_m) - \eta_m\|_{L^\infty([0,T];C^{\lambda+1,r}(\mathcal{G}_0))}. \end{aligned}$$

We proceed as for (166) (it is, in fact, simpler here). Calling  $\mathcal{U}_m$  the function  $\mathcal{U}$  constructed when computing  $\mathcal{F}^{\ell^1, r^1}(\eta_m)$ , we see that at each  $t$ :

$$\begin{aligned} \|\mathcal{U}_m - u_m \circ \eta_m\|_{C^{\lambda+1,r}(\mathcal{G}_0)} & \leq C \left( \|\operatorname{curl}(\mathcal{U}_m \circ \eta_m^{-1}) - \operatorname{curl}(u_m)\|_{C^{\lambda,r}(\mathcal{G}(t))} \right. \\ & \quad + \|\operatorname{div}(\mathcal{U}_m \circ \eta_m^{-1}) - \operatorname{div}(u_m)\|_{C^{\lambda,r}(\mathcal{G}(t))} \\ & \quad + \sum_{i=1}^g \left| \oint_{\eta_2(\Gamma_i)} (\mathcal{U}_m \circ \eta_m^{-1} - u_m) \cdot d\tau \right| \\ & \quad \left. + \|(\mathcal{U}_m \circ \eta_m^{-1}) \cdot n - u_m \cdot n\|_{C^{\lambda+1,r}(\partial\mathcal{G}(t))} \right) \\ & \leq C \left( \|\omega_0^1 - \omega_0^2\|_{C^{\lambda,r}(\mathcal{G}_0)} + \sum_{i=1}^g \left| \oint_{\eta(\Gamma_i)} u_0^1 \cdot d\tau - \oint_{\Gamma_i} u_0^2 \cdot d\tau \right| \right). \end{aligned}$$

Recalling that  $\mathcal{F}^{\ell^1, r^1}(\eta_m(t, \cdot)) - \eta_m(t, \cdot) = \int_0^t \mathcal{U}_m - u_m \circ \eta_m$ , with (186), (187) and (188), we deduce the claim.

*Acknowledgements.* – The three authors were partially supported by the Agence Nationale de la Recherche, Project CISIFS, grant ANR-09-BLAN-0213-02.

The authors thank the referee for his fruitful suggestions.

## REFERENCES

- [1] L. V. AHLFORS, *Complex analysis*, third ed., McGraw-Hill Book Co., 1978.
- [2] C. BARDOS, E. S. TITI, Loss of smoothness and energy conserving rough weak solutions for the 3d Euler equations, *Discrete Contin. Dyn. Syst. Ser. S* **3** (2010), 185–197.
- [3] J.-P. BOURGUIGNON, H. BREZIS, Remarks on the Euler equation, *J. Functional Analysis* **15** (1974), 341–363.

- [4] J.-Y. CHEMIN, Sur le mouvement des particules d'un fluide parfait incompressible bi-dimensionnel, *Invent. Math.* **103** (1991), 599–629.
- [5] J.-Y. CHEMIN, Régularité de la trajectoire des particules d'un fluide parfait incompressible remplissant l'espace, *J. Math. Pures Appl.* **71** (1992), 407–417.
- [6] J.-Y. CHEMIN, Fluides parfaits incompressibles, *Astérisque* **230** (1995).
- [7] A. DUTRIFOY, Precise regularity results for the Euler equations, *J. Math. Anal. Appl.* **282** (2003), 177–200.
- [8] P. GAMBLIN, Système d'Euler incompressible et régularité microlocale analytique, in *Séminaire sur les Équations aux Dérivées Partielles, 1992–1993*, École Polytech., 1993, exp. n° 20.
- [9] P. GAMBLIN, Système d'Euler incompressible et régularité microlocale analytique, *Ann. Inst. Fourier (Grenoble)* **44** (1994), 1449–1475.
- [10] P. W. GROSS, P. R. KOTIUGA, *Electromagnetic theory and computation: a topological approach*, Mathematical Sciences Research Institute Publications **48**, Cambridge Univ. Press, 2004.
- [11] J. G. HOUOT, J. SAN MARTIN, M. TUCSNAK, Existence of solutions for the equations modeling the motion of rigid bodies in an ideal fluid, *J. Funct. Anal.* **259** (2010), 2856–2885.
- [12] T. KATO, On the smoothness of trajectories in incompressible perfect fluids, in *Non-linear wave equations (Providence, RI, 1998)*, Contemp. Math. **263**, Amer. Math. Soc., 2000, 109–130.
- [13] T. KATO, Two manuscripts left by late Professor Tosio Kato in his personal computer, *Sūrikaisekikenkyūsho Kōkyūroku* **1234** (2001), 260–274.
- [14] H. KOCH, Transport and instability for perfect fluids, *Math. Ann.* **323** (2002), 491–523.
- [15] J. H. ORTEGA, L. ROSIER, T. TAKAHASHI, Classical solutions for the equations modelling the motion of a ball in a bidimensional incompressible perfect fluid, *M2AN Math. Model. Numer. Anal.* **39** (2005), 79–108.
- [16] J. H. ORTEGA, L. ROSIER, T. TAKAHASHI, On the motion of a rigid body immersed in a bidimensional incompressible perfect fluid, *Ann. Inst. H. Poincaré Anal. Non Linéaire* **24** (2007), 139–165.
- [17] C. ROSIER, L. ROSIER, Smooth solutions for the motion of a ball in an incompressible perfect fluid, *J. Funct. Anal.* **256** (2009), 1618–1641.
- [18] P. SERFATI, Équation d'Euler et holomorphies à faible régularité spatiale, *C. R. Acad. Sci. Paris Sér. I Math.* **320** (1995), 175–180.
- [19] P. SERFATI, Solutions  $C^\infty$  en temps,  $n$ -log Lipschitz bornées en espace et équation d'Euler, *C. R. Acad. Sci. Paris Sér. I Math.* **320** (1995), 555–558.
- [20] P. SERFATI, Structures holomorphes à faible régularité spatiale en mécanique des fluides, *J. Math. Pures Appl.* **74** (1995), 95–104.
- [21] A. SHNIRELMAN, Evolution of singularities, generalized Liapunov function and generalized integral for an ideal incompressible fluid, *Amer. J. Math.* **119** (1997), 579–608.
- [22] E. M. STEIN, *Singular integrals and differentiability properties of functions*, Princeton Mathematical Series **30**, Princeton Univ. Press, 1970.

- [23] V. THILLIEZ, On quasianalytic local rings, *Expo. Math.* **26** (2008), 1–23.

(Manuscrit reçu le 29 mars 2010 ;  
accepté, après révision, le 15 juillet 2011.)

Olivier GLASS  
CEREMADE, CNRS UMR 7534  
Université Paris-Dauphine,  
Place du Maréchal de Lattre de Tassigny,  
75775 Paris Cedex 16, France  
E-mail: [glass@ceremade.dauphine.fr](mailto:glass@ceremade.dauphine.fr)

Franck SUEUR  
Laboratoire Jacques-Louis Lions, CNRS UMR 7598  
Université Pierre et Marie Curie - Paris 6  
4, place Jussieu  
75252 Paris Cedex 05, France  
E-mail: [fsueur@ann.jussieu.fr](mailto:fsueur@ann.jussieu.fr)

Takéo TAKAHASHI  
Institut Élie Cartan de Nancy,  
INRIA-CNRS-Université de Nancy  
B.P. 239,  
54506 Vandœuvre-lès-Nancy Cedex, France  
E-mail: [takahashi@iecn.u-nancy.fr](mailto:takahashi@iecn.u-nancy.fr)